

UNICOM
122.8 (CTAF)
DENVER CENTER
127.95 338.2

(LLADN1.LLADN) 14093
LLADN ONE DEPARTURE (RNAV)

SI-10288 (FAA)

HULETT MUNI (W43)
HULETT, WYOMING

TAKEOFF MINIMUMS

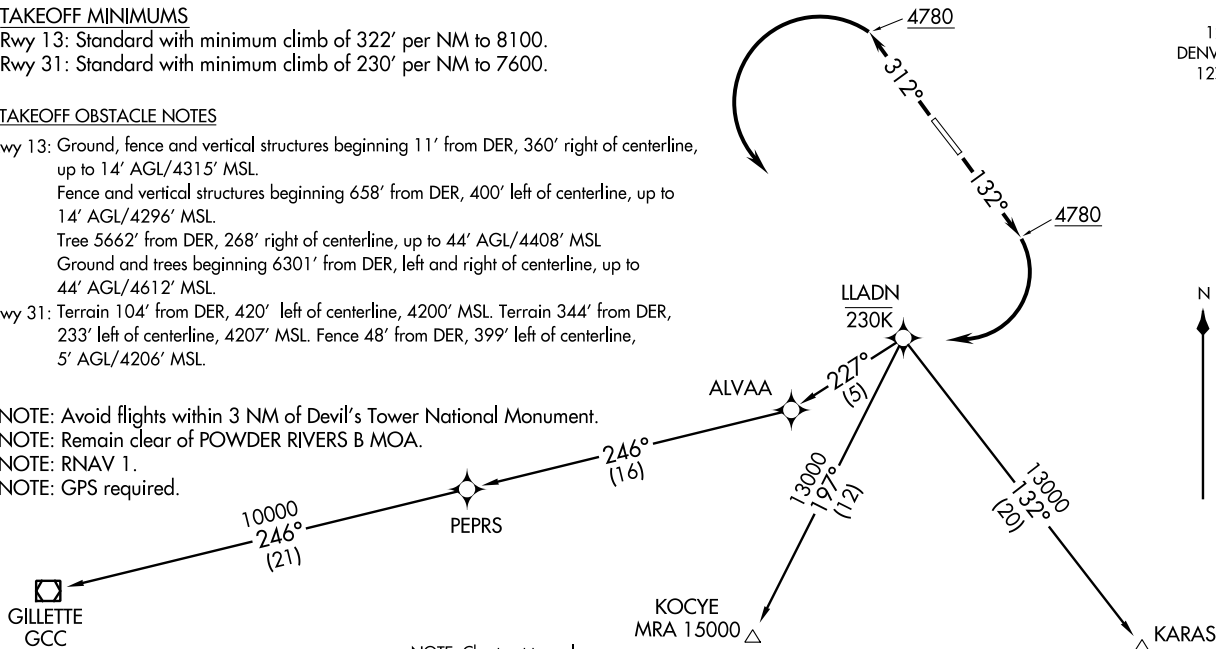
Rwy 13: Standard with minimum climb of 322' per NM to 8100.
Rwy 31: Standard with minimum climb of 230' per NM to 7600.

TAKEOFF OBSTACLE NOTES

Rwy 13: Ground, fence and vertical structures beginning 11' from DER, 360' right of centerline, up to 14' AGL/4315' MSL.
Fence and vertical structures beginning 658' from DER, 400' left of centerline, up to 14' AGL/4296' MSL.
Tree 5662' from DER, 268' right of centerline, up to 44' AGL/4408' MSL
Ground and trees beginning 6301' from DER, left and right of centerline, up to 44' AGL/4612' MSL.
Rwy 31: Terrain 104' from DER, 420' left of centerline, 4200' MSL. Terrain 344' from DER, 233' left of centerline, 4207' MSL. Fence 48' from DER, 399' left of centerline, 5' AGL/4206' MSL.

NOTE: Avoid flights within 3 NM of Devil's Tower National Monument.
NOTE: Remain clear of POWDER RIVERS B MOA.
NOTE: RNAV 1.
NOTE: GPS required.

NOTE: Chart not to scale.



DEPARTURE ROUTE DESCRIPTION

TAKEOFF RUNWAY 13: Climb heading 132° to 4780, then right turn direct LLADN, cross LLADN at/below 230K. Thence
TAKEOFF RUNWAY 31: Climb heading 312° to 4780, then left turn direct LLADN, cross LLADN at/below 230K. Thence
. . . . Expect further clearance to filed altitude 10 minutes after departure.

LOST COMMUNICATIONS: Alternate frequency 135.6 / 363.025.

- GILLETTE TRANSITION (LLADN1.GCC)
- KARAS TRANSITION (LLADN1.KARAS)
- KOCYE TRANSITION (LLADN1.KOCYE)

LLADN ONE DEPARTURE (RNAV)
(LLADN1.LLADN) 14093

HULETT, WYOMING
HULETT MUNI (W43)