

APP CRS 303°	Rwy Idg 10996 TDZE 2643 Apt Elev 2643
------------------------	--

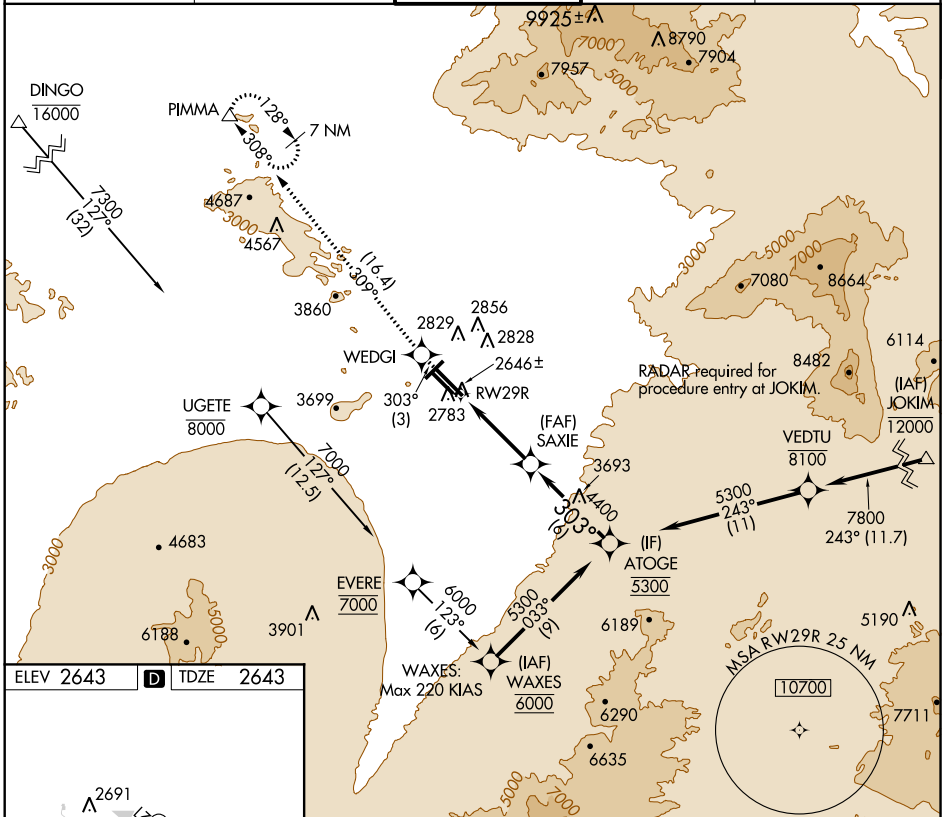
RNAV (RNP) Y RWY 29R

TUCSON INTL (TUS)

▼ When VGSI inoperative, procedure NA at night. GPS required.
▲ NA For uncompensated Baro-VNAV systems, procedure NA below -5°C (23°F) or above 43°C (110°F).

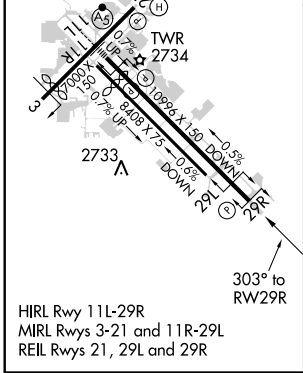
MISSED APPROACH: Climb to 6500 via 303° track to WEDGI, 309° track to PIMMA and hold.

ATIS 123.8 279.65	TUCSON APP CON 119.4 318.1	TUCSON TOWER 118.3 257.8	GND CON 124.4 348.6	CLNC DEL 126.65 326.2
-----------------------------	--------------------------------------	------------------------------------	-------------------------------	---------------------------------



SW-4, 08 JAN 2015 to 05 FEB 2015

SW-4, 08 JAN 2015 to 05 FEB 2015



6500 ↑ 303° tr	WEDGI 303° tr	PIMMA ▲	SAXIE 4400	ATOGE 5300	Procedure Turn NA
RWY 29R		303°		GP 3.00° TCH 53	
5.3 NM		6 NM			
CATEGORY	A	B	C	D	
RNP 0.30 DA	3049-1 $\frac{3}{8}$		406 (500-1 $\frac{3}{8}$)		

AUTHORIZATION REQUIRED