

RNAV (GPS) RWY 21

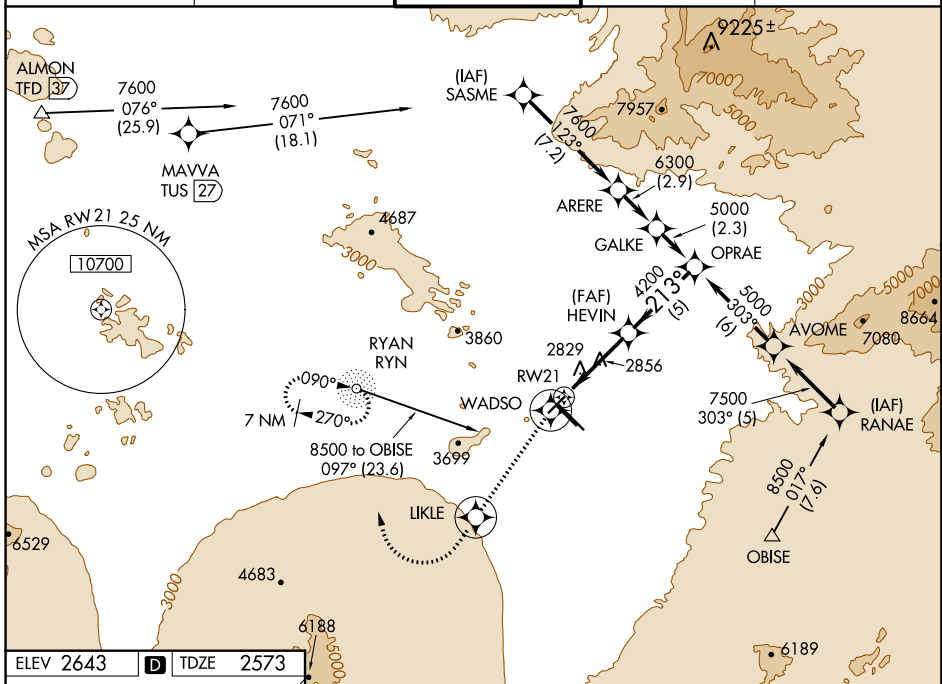
TUCSON INTL (TUS)

APP CRS 213°	Rwy Idg TDZE Apt Elev	6000 2573 2643
------------------------	-----------------------------	---

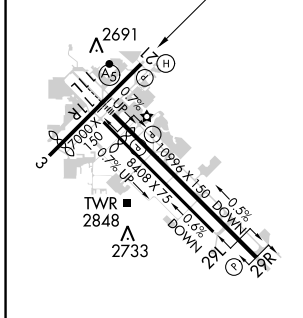
⚠ For uncompensated Baro-VNAV systems, LNAV/VNAV NA below -20°C (-4°F) or above 43°C (111°F).
⚠ NA DME/DME RNP-0.3 NA.

MISSED APPROACH: Climb to 6000 via 213° course to WADSO WP, then via 203° course to LIKLE WP, then climbing right turn direct RYN NDB and hold.

ATIS 123.8 279.65	TUCSON APP CON 119.4 318.1	TUCSON TOWER 118.3 257.8	GND CON 124.4 348.6	CLNC DEL 126.65 326.2
-----------------------------	--------------------------------------	------------------------------------	-------------------------------	---------------------------------



ELEV 2643	D	TDZE 2573
-----------	----------	-----------



HIRL Rwy 11L-29R
 MIRL Rwy 3-21 and 11R-29L
 REIL Rwy 21, 29L and 29R

6000 ↑ 213° crs	WADSO	LIKLE ↑ 203° crs	RYN	Procedure Turn NA
VGSi and RNAV glidepath not coincident (VGSi Angle 3.00/TCH 47).				OPRAE
*1.7 NM to RWY21 *LNAV only				GP 3.00° TCH 50
1.7 3.2 NM 5 NM				

CATEGORY	A	B	C	D
GLS PA DA	NA			
LNAV/VNAV DA	3141-2		568 (600-2)	
LNAV MDA	3160-1	587 (600-1)	3160-1½ 587 (600-1½)	3160-1¾ 587 (600-1¾)
CIRCLING	3160-1 517 (600-1)	3220-1 577 (600-1)	3220-1½ 577 (600-1½)	3220-2 577 (600-2)

SW-4, 12 OCT 2017 to 09 NOV 2017

SW-4, 12 OCT 2017 to 09 NOV 2017