

APP CRS	Rwy Idg	6150
030°	TDZE	2572
	Apt Elev	2643

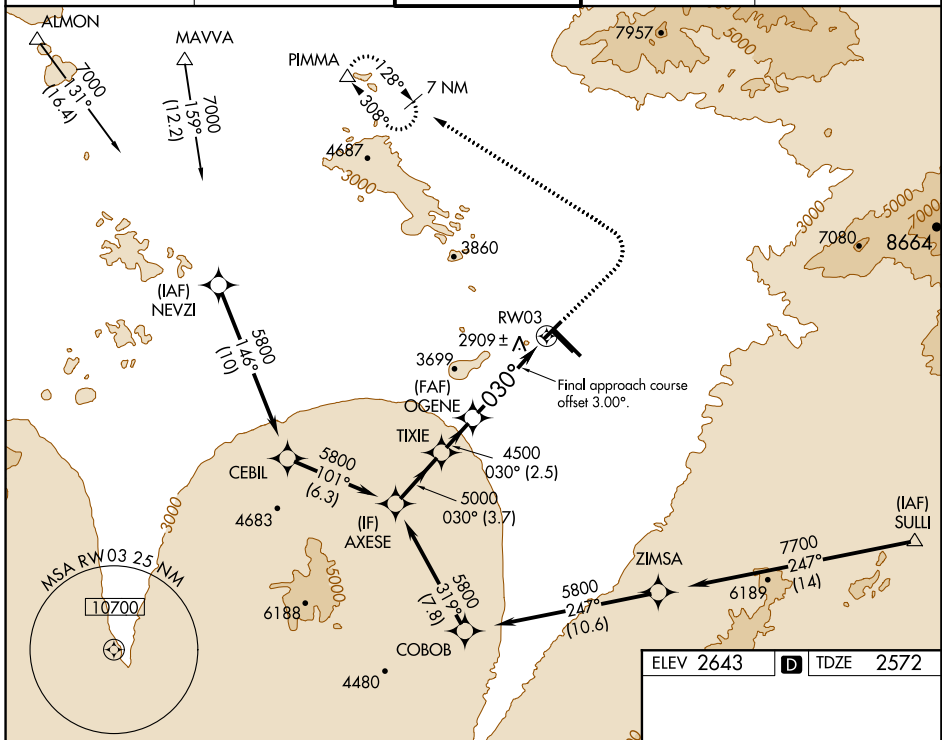
RNAV (GPS) RWY 3

TUCSON INTL (TUS)

▼ For uncompensated Baro-VNAV systems, LNAV/VNAV NA below -20°C (-4°F) or above 27°C (80°F). DME/DME RNP-0.3 NA. Helicopter visibility reduction below 3/4 SM NA.

MISSED APPROACH: Climb to 3500 then climbing left turn to 6500 direct PIMMA and hold.

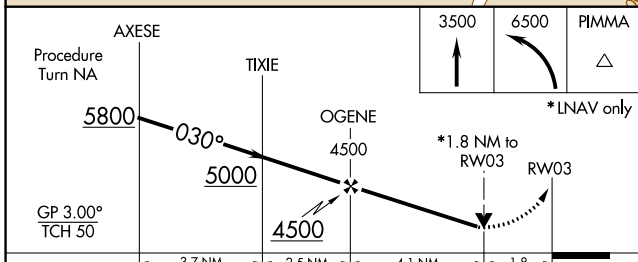
ATIS 123.8 279.65	TUCSON APP CON 119.4 318.1	TUCSON TOWER 118.3 257.8	GND CON 124.4 348.6	CLNC DEL 126.65 326.2
-----------------------------	--------------------------------------	---	-------------------------------	---------------------------------



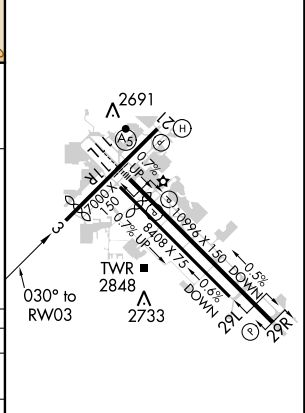
SW-4, 12 OCT 2017 to 09 NOV 2017

SW-4, 12 OCT 2017 to 09 NOV 2017

ELEV 2643	D TDZE 2572
-----------	--------------------



CATEGORY	A	B	C	D
LNAV/ VNAV DA	3284-2½		712 (700-2½)	
LNAV MDA	3180-1	608 (600-1)	3180-1¾	608 (600-1¾)
CIRCLING	3180-1 537 (600-1)	3220-1 577 (600-1)	3220-1¾ 577 (600-1¾)	3220-2 577 (600-2)



HIRL Rwy 11L-29R
MIRL Rws 3-21 and 11R-29L
REIL Rws 21, 29L and 29R