


LOC/DME I-TUS 111.7 Chan 54	APP CRS 123°	Rwy Idg 10996 TDZE 2599 Apt Elev 2643
---	------------------------	--

ILS or LOC RWY 11L

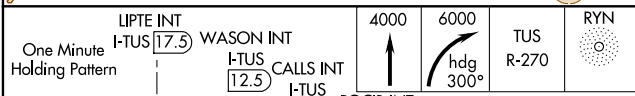
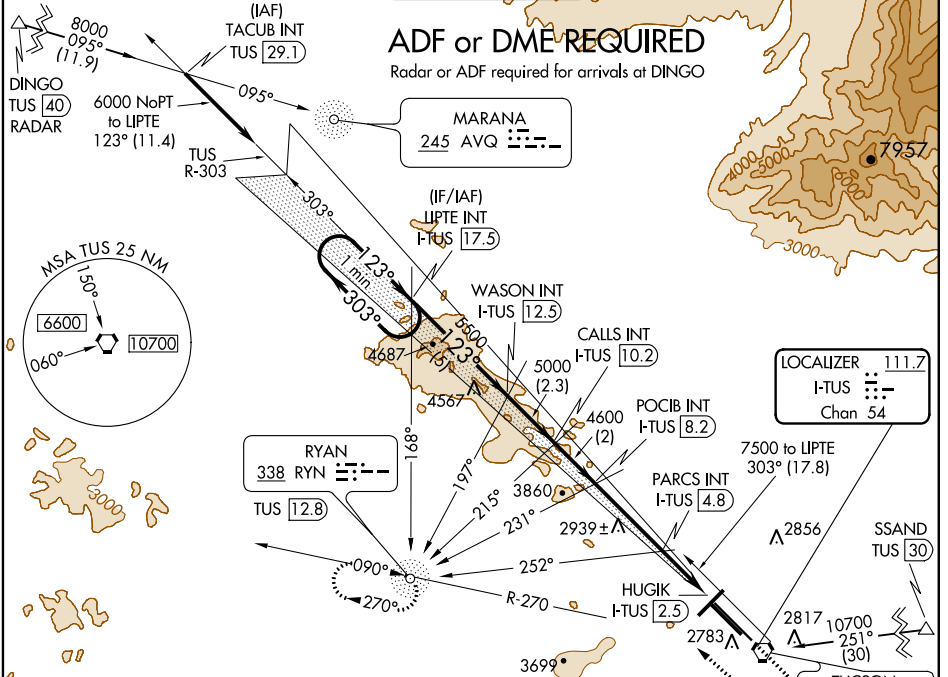
TUCSON INTL (TUS)

⚠ For inoperative MALSR, increase S-ILS 11L Cat E visibility to RVR 5000, S-LOC 11L Cat D and Cat E visibility to RVR 5000. ADF or DME required.

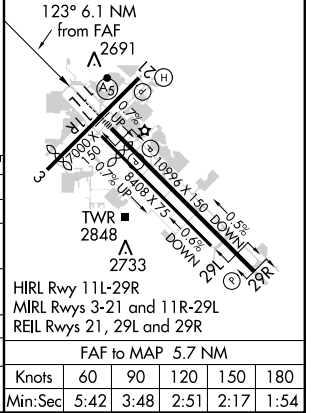
MALSR 

MISSED APPROACH: Climb to 4000 then climbing right turn to 6000 via heading 300° and TUS R-270 to RYN NDB/TUS 12.8 DME and hold.

ATIS 123.8 279.65	TUCSON APP CON 119.4 318.1	TUCSON TOWER 118.3 257.8	GND CON 124.4 348.6	CLNC DEL 126.65 326.2
-----------------------------	--------------------------------------	------------------------------------	-------------------------------	---------------------------------



	A	B	C	D	E
S-ILS 11L	2800/24 201 (200-½)				
S-LOC 11L	3480-1 ¼	881 (900-1 ¼)	3480-2 ¾ 881 (900-2 ¾)	3480-3 881 (900-3)	
CIRCLING	3480-1 ¼	837 (900-1 ¼)	3480-2 ¾ 837 (900-2 ¾)	3480-3 837 (900-3)	3740-3 1097(1100-3)
PARCS FIX MINIMUMS					
S-LOC 11L	2900/24	301 (300-½)	2900/40	301 (300-¾)	
CIRCLING	3100-1 457 (500-1)	3220-1 577 (600-1)	3220-1 ½ 577 (600-1 ½)	3220-2 577 (600-2)	3740-3 1097(1100-3)



SW-4, 17 AUG 2017 to 14 SEP 2017

SW-4, 17 AUG 2017 to 14 SEP 2017