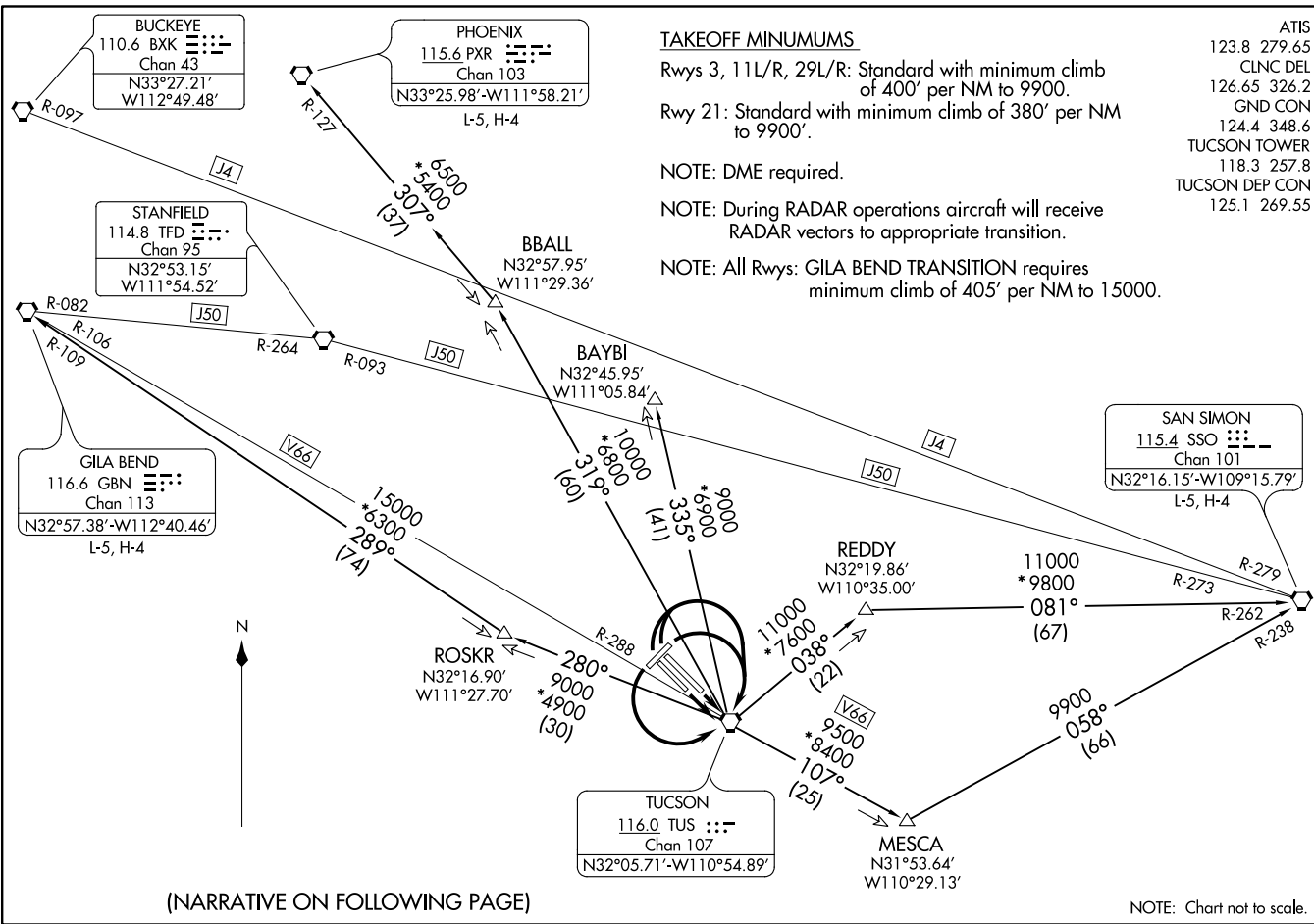


TUCSON EIGHT DEPARTURE
(TUS8.TUS) 20SEP12

TUCSON, ARIZONA
TUCSON INTL (TUS)



(NARRATIVE ON FOLLOWING PAGE)

NOTE: Chart not to scale.

(TUS8.TUS) 16239
TUCSON EIGHT DEPARTURE

SI-430 (FAA)

TUCSON INTL (TUS)
TUCSON, ARIZONA



DEPARTURE ROUTE DESCRIPTION

TAKEOFF RUNWAYS 11L/R: Climb direct TUS VORTAC. Thence. . . .

TAKEOFF RUNWAYS 3, 29L/R: Climbing right turn direct TUS VORTAC. Thence. . . .

TAKEOFF RUNWAY 21: Climbing left turn direct TUS VORTAC. Thence. . . .

. . . . via assigned transition. Maintain 17000, expect clearance to filed altitude 10 minutes after departure.

BAYBI TRANSITION (TUS8.BAYBI): From over TUS VORTAC via TUS R-335 to BAYBI.

BBALL TRANSITION (TUS8.BBALL): From over TUS VORTAC via TUS R-319 to BBALL.

GILA BEND TRANSITION (TUS8.GBN): From over TUS VORTAC via TUS R-280 and GBN R-109 to GBN VORTAC.

MESCA TRANSITION (TUS8.MESCA): From over TUS VORTAC via TUS R-107 and SSO R-238 to SSO VORTAC.

PHOENIX TRANSITION (TUS8.PXR): From over TUS VORTAC via TUS R-319 and PXR R-127 to PXR VORTAC.

REDDY TRANSITION (TUS8.REDDY): From over TUS VORTAC via TUS R-038 and SSO R-262 to SSO VORTAC.

TAKEOFF OBSTACLE NOTES

Rwy 3: Multiple trees and sign beginning 1385' from DER, 127' left of centerline, up to 41' AGL/2611' MSL. Tree 2062' from DER, 332' right of centerline, 46' AGL/2626' MSL.

Rwy 11L: Vents 115' from DER, 147' left and right of centerline, 6' AGL/2646' MSL. Multiple bushes beginning 449' from DER, 395' left of centerline, up to 24' AGL/2674' MSL. Multiple bushes beginning 188' from DER, 328 right of centerline, up to 13' AGL/2663' MSL.

Rwy 11R: Tree 584' from DER, 176' right of centerline, 25' AGL/2645' MSL.

Rwy 21: Bush 104' from DER, 256' left of centerline, 12' AGL/2572' MSL. RR 248' from DER, right to left of centerline, 23' AGL/2582' MSL. Bush 549' from DER, 384' left of centerline, 33' AGL/2583' MSL. Tree 701' from DER, 144' left of centerline, 37' AGL/2587' MSL. Pole 950' from DER, 166' left of centerline, 38' AGL/2588' MSL. Pole 1028' from DER, 89' left of centerline, 46' AGL/2599' MSL. Pole 1298' from DER, 594' left of centerline, 66' AGL/2616' MSL. Electrical system 1445' from DER, 319' left of centerline, 55' AGL/2605' MSL. Bush 141' from DER, 330' right of centerline, 24' AGL/2574' MSL. Bush 454' from DER, 138' right of centerline, 26' AGL/2576' MSL. Electrical system 1176' from DER, 37' right of centerline, 48' AGL/2598' MSL.

Rwy 29L: Aircraft on ramp 2723' from DER, 348' left of centerline, up to 30' AGL/2680' MSL.

Rwy 29R: Aircraft on ramp 2779' from DER, 1056' left of centerline, up to 30' AGL/2680' MSL.

SW-4, 17 AUG 2017 to 14 SEP 2017

SW-4, 17 AUG 2017 to 14 SEP 2017