

BURRO THREE DEPARTURE (RNAV)

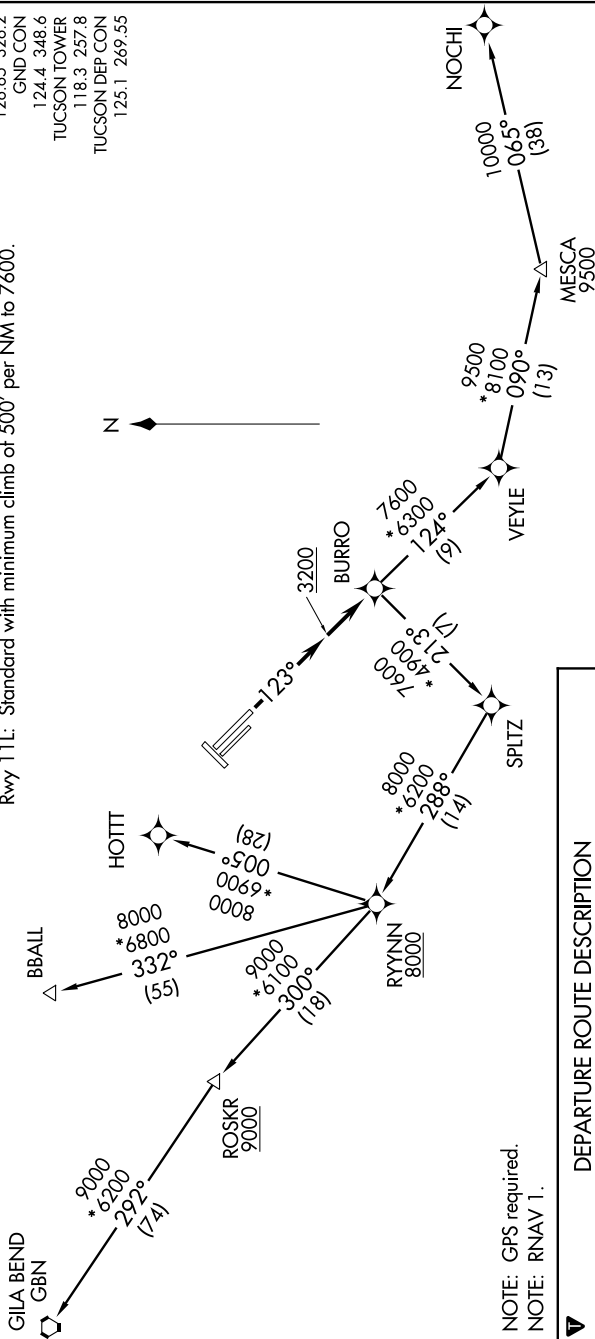
SW-4, 08 JAN 2015 to 05 FEB 2015

TAKEOFF MINIMUMS

Rwys 3, 11R, 21, 29L, 29R: NA - ATC.

Rwy 11L: Standard with minimum climb of 500' per NM to 7600.

ATIS 123.8 279.65
CLNC DEL 126.65 326.2
GND CON 124.4 348.6
TUCSON TOWER 118.3 257.8
TUCSON DEP CON 125.1 269.55



NOTE: GPS required.
NOTE: RNAV 1.

DEPARTURE ROUTE DESCRIPTION

TAKEOFF RUNWAY 11L: Climb heading 123° to 3200 MSL,

then direct BURRO, thence....

...via (transition) maintain 17000, expect filed altitude 10 minutes after departure.

BBALL TRANSITION (BURRO3.BBALL)

GILA BEND TRANSITION (BURRO3.GBN)

HOTT TRANSITION (BURRO3.HOTT)

NOCHI TRANSITION (BURRO3.NOCHI)

TAKEOFF OBSTACLE NOTES

Rwy 11L: Vents 115' from DER, 147' left and right of centerline, 6' AGL/2646' MSL.

Multiple bushes beginning 449' from DER, 395' left of centerline, up to 24' AGL/2674' MSL.

Multiple bushes beginning 188' from DER, 328' right of centerline, up to 13' AGL/2663' MSL.

NOTE: Chart not to scale.