

LOC I-TTN 111.3	APP CRS 058°	Rwy Idg 6006
		TDZE 186
		Apt Elev 212

ILS or LOC RWY 6

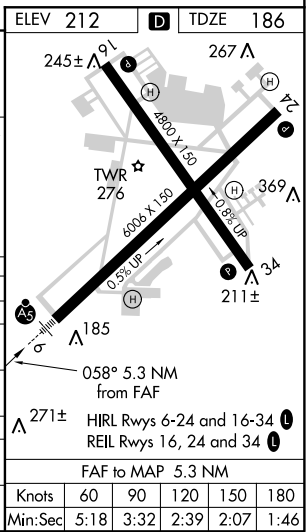
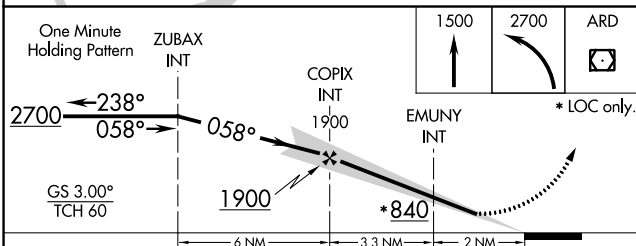
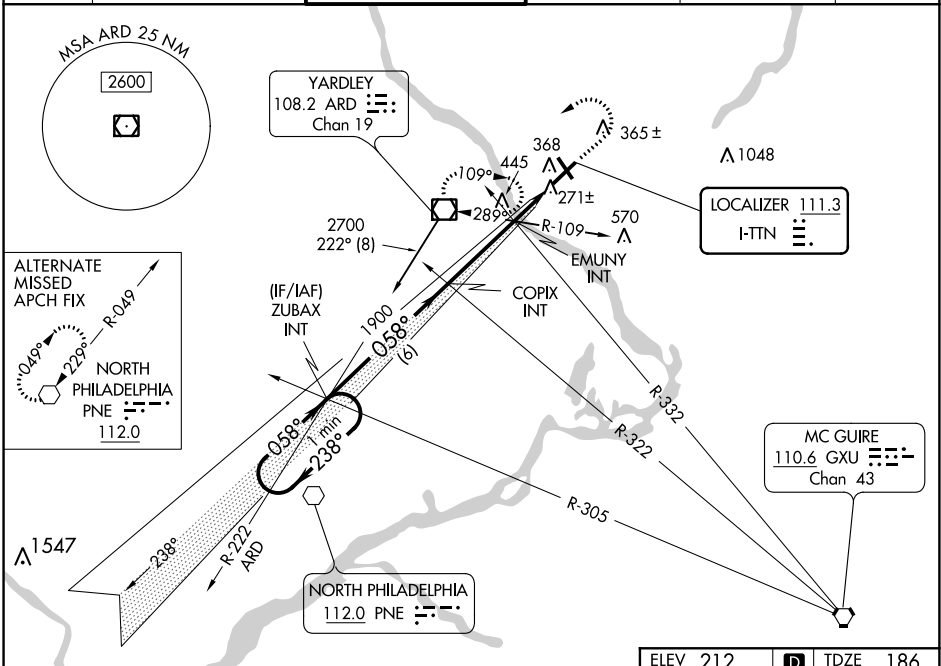
TRENTON MERCER (T'N)

▼ When local altimeter not received use Northeast Philadelphia altimeter setting: increase DA to 435; increase all MDA 40 feet and visibility Cat C and D ½ mile. Night Landing: Rwy 34 operational VGSJ required, remain on or above VGSJ glidepath until threshold.



MISSED APPROACH: Climb to 1500 then climbing left turn to 2700 direct ARD VOR/DME and hold.

ATIS 126.775	PHILADELPHIA APP CON 123.8 291.7	TRENTON TOWER ★ 120.7 (CTAF) 257.8	GND CON 121.9 257.8	CLNC DEL 121.9 257.8	UNICOM 122.95
------------------------	--	--	-------------------------------	--------------------------------	-------------------------



CATEGORY	A	B	C	D
S-ILS 6	414-½ 228 (300-½)			
S-LOC 6	840-½ 654 (700-½)	840-1¾ 654 (700-1¾)		
CIRCLING	840-1 628 (700-1)	840-1½ 628 (700-1½)	840-2 628 (700-2)	
EMUNY FIX MINIMUMS (DUAL VOR RECEIVERS REQUIRED)				
S-LOC 6	540-½ 354 (400-½)	540-5/8 354 (400-5/8)		
CIRCLING	680-1 468 (500-1)	680-1½ 468 (500-1½)	780-2 568 (600-2)	

NE-2, 12 OCT 2017 to 09 NOV 2017

NE-2, 12 OCT 2017 to 09 NOV 2017