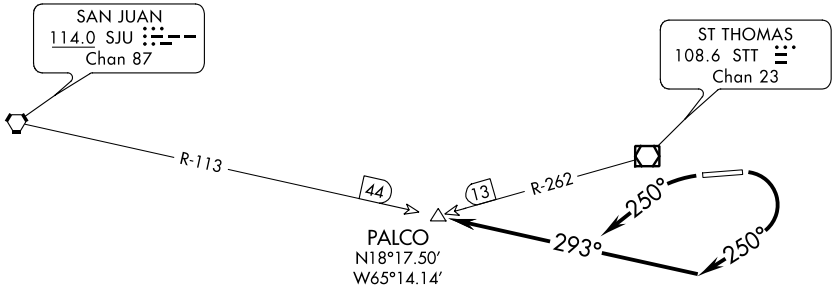


PALCO SEVEN DEPARTURE

CYRIL E KING (STT)(TIST)
CHARLOTTE AMALIE, ST THOMAS, VIRGIN ISLANDS

ATIS 124.0
GND CON
121.9
ST THOMAS TOWER *
118.8 (CTAF) 257.6
118.1 (NORTH OF ISLAND)
SAN JUAN DEP CON
128.65 279.6

**TOP ALTITUDE:
3000**



TAKE-OFF MINIMUMS:

- Rwy 10: 400-1 with minimum climb of 462' per NM to 1400 or 2100-2½ for climb in visual conditions.
- Rwy 28: 800-3 or Standard with a minimum climb of 366' per NM to 1000.

TAKEOFF OBSTACLE NOTES:

- Rwy 10: Antenna on building 258' from DER, 485' left of centerline, 25' AGL/ 41' MSL. Multiple trees beginning 729' from DER, 244' right of centerline up to 100' AGL/259' MSL. Pole 300' from DER, 430' right of centerline, 23' AGL/39' MSL.
- Rwy 28: Antenna 33' from DER, 412' left of centerline, 16' AGL/29' MSL. Bush 175' from DER, 178' right of centerline, 2' AGL/29' MSL. Bush 206' from DER, 121' left of centerline, 2' AGL/29' MSL. Trees beginning 2.39 NMs from DER, 4351' right of centerline, 100' AGL/ 710' MSL.

NOTE: Chart not to scale.

NOTE: DME or RADAR Required.



DEPARTURE ROUTE DESCRIPTION

TAKEOFF RWY 10: Turn right heading 250° (unless assigned otherwise) to intercept the SJU R-113 to PALCO INT, or climb in visual conditions to cross Cyril E. King airport at or above 2100, then on SJU R-113 to PALCO INT. Thence

TAKEOFF RWY 28: Turn left heading 250° (unless assigned otherwise) to intercept the SJU R-113 to PALCO INT. Thence
. . . . Maintain 3000 unless assigned lower altitude.
Expect clearance to flight level 280 or requested altitude if lower ten minutes after departure. Contact San Juan Departure.

SE-3, 27 APR 2017 to 25 MAY 2017

SE-3, 27 APR 2017 to 25 MAY 2017