

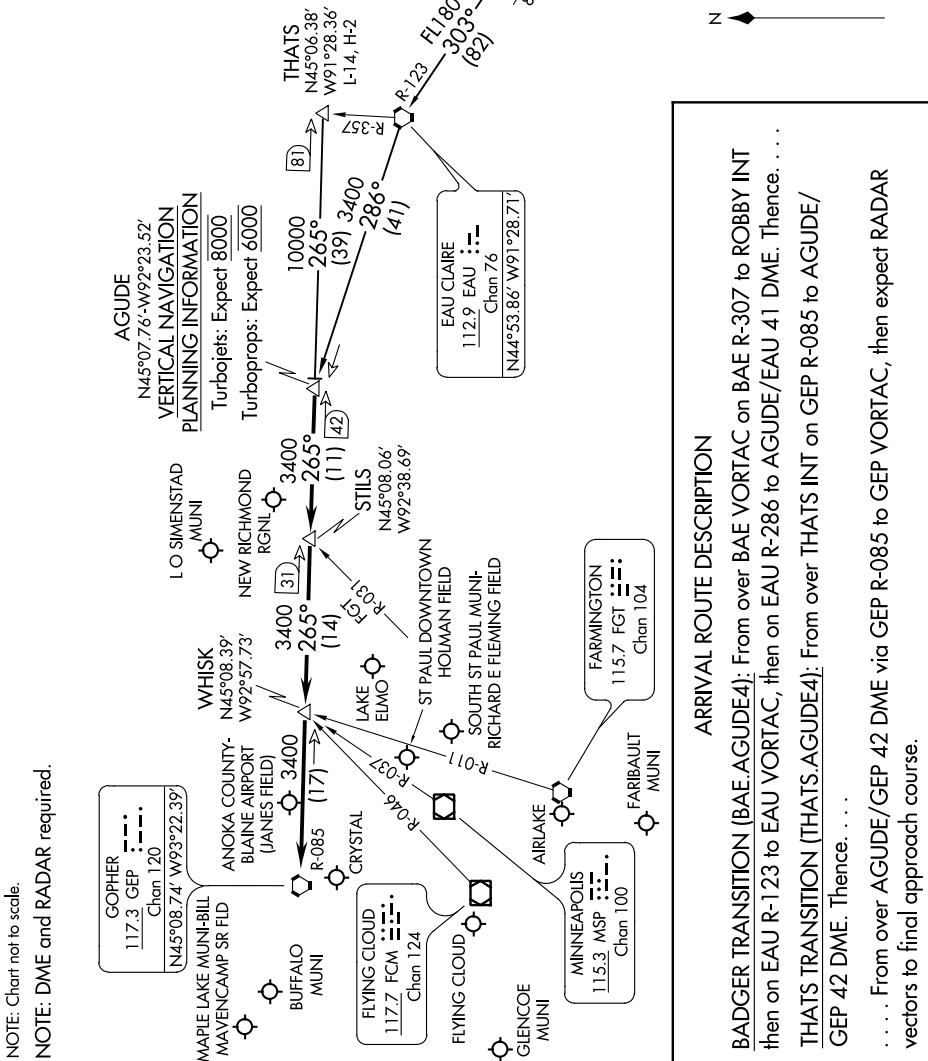
# AGUDE FOUR ARRIVAL

AL-263 (FAA)

MINNEAPOLIS-ST PAUL, MINNESOTA

NC-1, 27 APR 2017 to 25 MAY 2017

MINNEAPOLIS APP CON  
126.95 357.4  
ANOKA COUNTY ATIS  
120.625  
CRYSTAL ATIS  
124.475  
FLYING CLOUD ATIS  
124.9  
ST PAUL DOWNTOWN ATIS  
118.35



**ARRIVAL ROUTE DESCRIPTION**

**BADGER TRANSITION (BAE.AGUDE4):** From over BAE VORTAC on BAE R-307 to ROBBY INT then on EAU R-123 to EAU VORTAC, then on EAU R-286 to AGUDE/EAU 41 DME. Thence. . . .

**THATS TRANSITION (THATS.AGUDE4):** From over THATS INT on GEP R-085 to AGUDE/ GEP 42 DME. Thence. . . .

. . . . From over AGUDE/GEP 42 DME via GEP R-085 to GEP VORTAC, then expect RADAR vectors to final approach course.

# AGUDE FOUR ARRIVAL

MINNEAPOLIS-ST PAUL, MINNESOTA

NC-1, 27 APR 2017 to 25 MAY 2017