


WAAS CH <b>62828</b> <b>W14A</b>	APP CRS <b>143°</b>	Rwy Idg TDZE Apt Elev	<b>6148</b> <b>705</b> <b>705</b>
--	------------------------	-----------------------------	---

# RNAV (GPS) RWY 14

ST PAUL DOWNTOWN HOLMAN FIELD (STP)

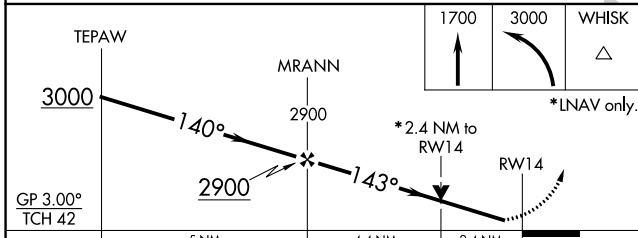
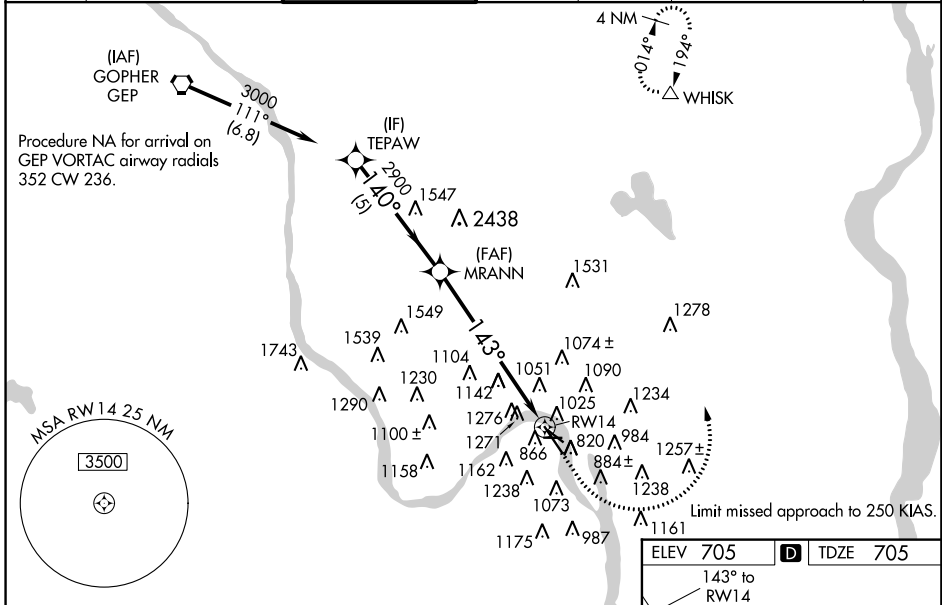
**⚠** When local altimeter setting not received, use South St Paul Muni-Richard E Fleming Field altimeter setting. Circling to Rwy 9 NA at night. For uncompensated Baro-VNAV systems, LNAV/VNAV NA below -16°C (4°F) or above 39°C (102°F). DME/DME RNP-0.3 NA. Visibility reduction by helicopters NA. When VGSI inop, Circling Rwy 13 NA at night. For inop MALS, increase LPV all Cats visibility to RVR 4500, LNAV/VNAV all Cats visibility to 2¾ mile, and LNAV Cat A visibility to RVR 5000, Cats C and D to 2½ mile. Baro-VNAV and VDP NA when using South St Paul Muni-Richard E Fleming Field altimeter setting.

**MALS**



**MISSED APPROACH:**  
Climb to 1700 then climbing left turn to 3000 direct WHISK and hold.

ATIS <b>118.35</b>	MINNEAPOLIS APP CON <b>121.2</b>	ST. PAUL TOWER * <b>119.1</b> (CTAF) <b>257.8</b>	GND CON <b>121.675</b>	CLNC DEL <b>121.675</b>	MINNEAPOLIS CLNC DEL <b>121.675</b> (when tower closed)	UNICOM <b>122.95</b>
-----------------------	-------------------------------------	--	---------------------------	----------------------------	---	-------------------------



ELEV 705	<b>D</b>	TDZE 705
----------	----------	----------

MIRL Rwy 9-27 **Ⓛ**  
REIL Rwy 31 **Ⓛ**  
REIL Rwy 32  
HIRL Rws 14-32 and 13-31 **Ⓛ**

NC-1, 27 APR 2017 to 25 MAY 2017

NC-1, 27 APR 2017 to 25 MAY 2017