

LOC/DME I-BAO <b>111.5</b> Chan 52	APP CRS <b>326°</b>	Rwy Idg TDZE Apt Elev	<b>6109</b> <b>704</b> <b>705</b>
--	------------------------	-----------------------------	---

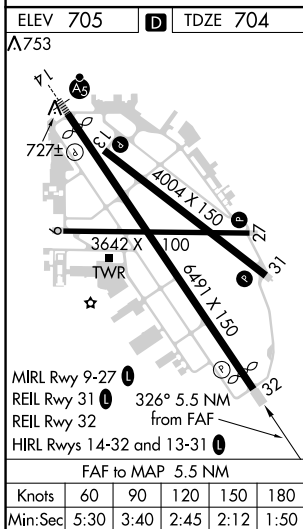
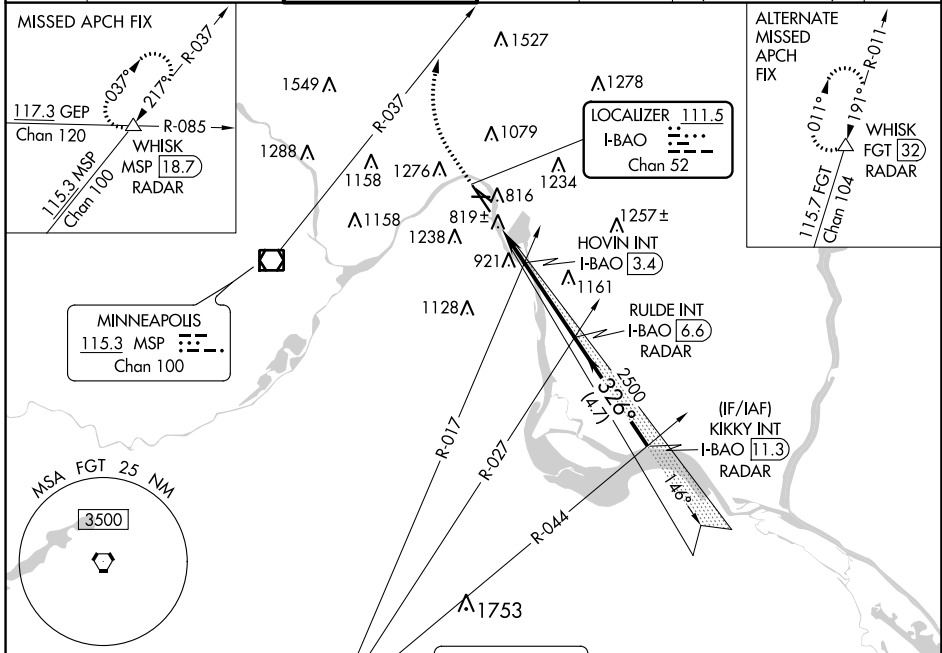
# ILS or LOC RWY 32

ST PAUL DOWNTOWN HOLMAN FIELD (STP)

**⚠** Rwy 32 helicopter visibility reduction below RVR 4000 NA. DME or RADAR required.

**⚠** MISSED APPROACH: Climb to 1300 then climbing right turn to 4000 on heading 010° and MSP R-037 to WHISK INT/MSP 18.7 DME/RADAR and hold.

ATIS <b>118.35</b>	MINNEAPOLIS APP CON <b>121.2 335.65</b>	ST. PAUL TOWER ★ <b>119.1(CTAF) 257.8</b>	GND CON <b>121.675</b>	CLNC DEL <b>121.675</b>	MINNEAPOLIS CLNC DEL <b>121.675</b> (when tower closed)	UNICOM <b>122.95</b>
-----------------------	--	--	---------------------------	----------------------------	---	-------------------------



ELEV 705	TDZE 704				
1300	4000	MSP R-037	WHISK	RULDE INT I-BAO 6.6 RADAR	KIKKY INT I-BAO 11.3 RADAR
*LOC only		I-BAO 1.1	*I-BAO 2.3	HOVIN INT I-BAO 3.4	2500
		1.2 NM	1.1 NM	3.2 NM	4.7 NM
CATEGORY	A	B	C	D	
S-ILS 32	1011/50 307 (400-1)				
S-LOC 32	1460/55 756 (800-1¼)	1460/60 756 (800-1¼)	1460-2	756 (800-2)	
<b>C</b> CIRCLING	1580-1¼	875 (900-1¼)	1580-2½ 875 (900-2½)	1580-2¾ 875 (900-2¾)	
HOVIN FIX MINIMUMS					
S-LOC 32	1140/55	436 (500-1¼)	1140-1¼	436 (500-1¼)	
<b>C</b> CIRCLING	1580-1¼	875 (900-1¼)	1580-2½ 875 (900-2½)	1580-2¾ 875 (900-2¾)	

NC-1, 14 SEP 2017 to 12 OCT 2017

NC-1, 14 SEP 2017 to 12 OCT 2017