

ST. LOUIS, MISSOURI

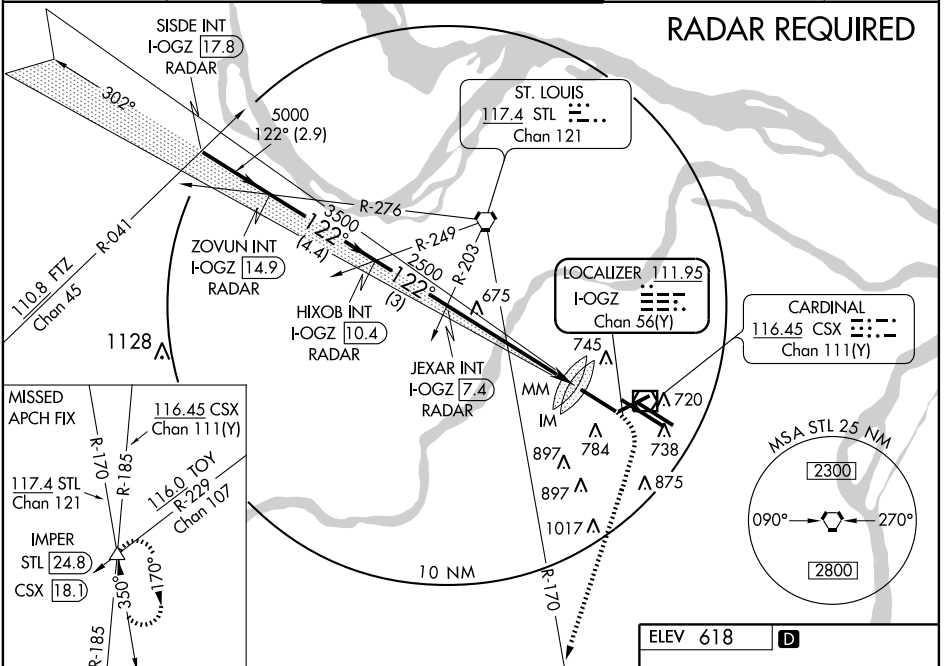
AL-360 (FAA)

LOC/DME I-OGZ 111.95 Chan 56(Y)	APP CRS 122°	Rwy Idg TDZE Apt Elev 9001 618 618
---	------------------------	--

ILS RWY 11 (CAT III)

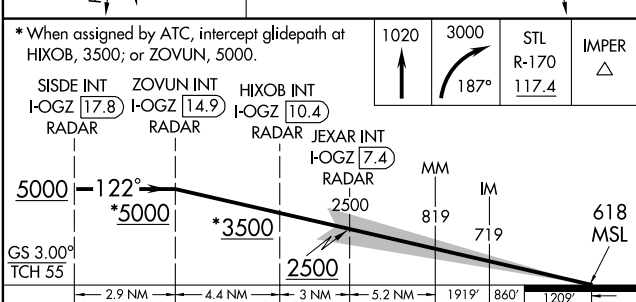
ST. LOUIS/ LAMBERT-ST. LOUIS INTL (STL)

ATIS 125.025 379.925		ST. LOUIS APP CON 133.55 338.25		ST. LOUIS TOWER N 120.05 284.6 S 118.5 257.7 W 132.475 239.275		GND CON 121.9 348.6 (Inbound) 121.65 387.05 (Outbound) 118.925 227.125 (West)		CLNC DEL 119.5 363.1	
---------------------------------------	--	--	--	---	--	--	--	---------------------------------------	--



NC-3, 19 NOV 2009 to 17 DEC 2009

NC-3, 19 NOV 2009 to 17 DEC 2009



ELEV 618 **D**

Rwy 6-24 7602 X 150
Rwy 11-29 9001 X 150
Rwy 12L-30R 9003 X 150
Rwy 12R-30L 11019 X 150

TDZE 618

HIRL all Rwys
REL Rwys 12L and 30L
TDZ/CL Rwys 11, 12L, 12R, 29, and 30R

CATEGORY	A	B	C	D
S-ILS 11		CAT IIIa	RVR 07	
S-ILS 11		CAT IIIb	RVR 06	
S-ILS 11		CAT IIIc	NA	

CATEGORY III ILS - SPECIAL AIRCREW & AIRCRAFT CERTIFICATION REQUIRED

ST. LOUIS, MISSOURI
Orig-A 09295

38°45'N-90°22'W

ST. LOUIS/ LAMBERT-ST. LOUIS INTL (STL)
ILS RWY 11 (CAT III)