

ST. LOUIS, MISSOURI

AL-360 (FAA)

LOC/DME I-OGZ 111.95 Chan 56(Y)	APP CRS 122°	Rwy Idg TDZE Apt Elev	9001 618 618
--	------------------------	-----------------------------	---

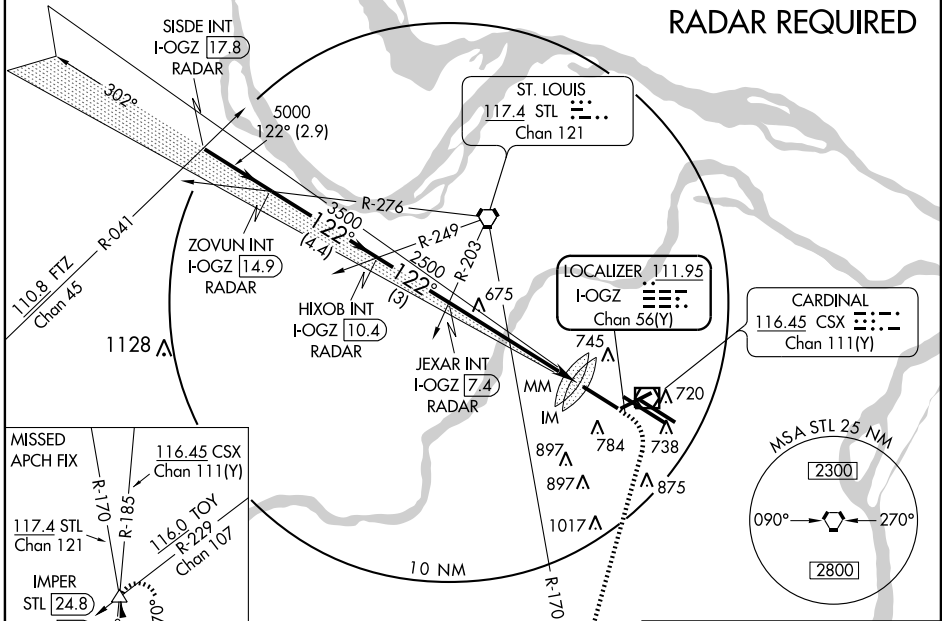
ILS RWY 11 (CAT II)

ST. LOUIS/LAMBERT-ST. LOUIS INTL (STL)

	MISSED APPROACH: Climb to 1020 then climbing right turn to 3000 via heading 187° and STL R-170 to IMPER INT/STL 24.8 DME and hold.	

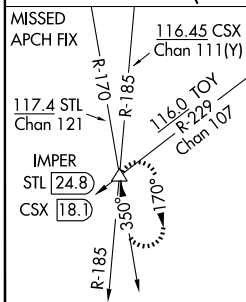
ATIS 125.025 379.925	ST. LOUIS APP CON 133.55 338.25	ST. LOUIS TOWER N 120.05 284.6 S 118.5 257.7 W 132.475 239.275	GND CON 121.9 348.6 (Inbound) 121.65 387.05 (Outbound) 118.925 227.125 (West)	CLNC DEL 119.5 363.1
--------------------------------	---	---	---	--------------------------------

RADAR REQUIRED

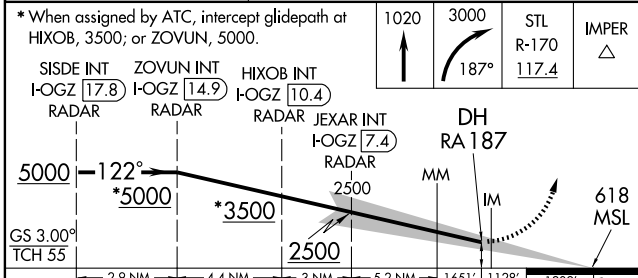


NC-3, 19 NOV 2009 to 17 DEC 2009

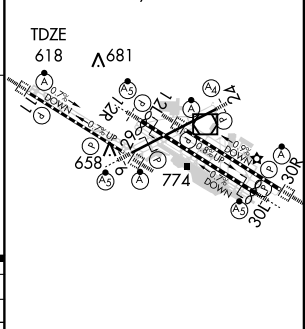
NC-3, 19 NOV 2009 to 17 DEC 2009



ELEV 618	D
Rwy 6-24 7602 X 150 Rwy 11-29 9001 X 150 Rwy 12L-30R 9003 X 150 Rwy 12R-30L 11019 X 150	



CATEGORY	A	B	C	D
S-ILS 11	718/12 100 RA 187			



CATEGORY II ILS - SPECIAL AIRCREW & AIRCRAFT CERTIFICATION REQUIRED

HIRL all Rwys
REIL Rwys 12L and 30L
TDZ/CL Rwys 11, 12L, 12R, 29, and 30R

ST. LOUIS, MISSOURI
Orig-A 09295

38°45'N-90°22'W

ST. LOUIS/LAMBERT-ST. LOUIS INTL (STL)
ILS RWY 11 (CAT II)