

(SIMULTANEOUS CLOSE PARALLEL)

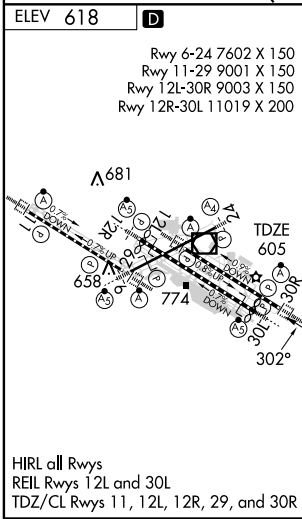
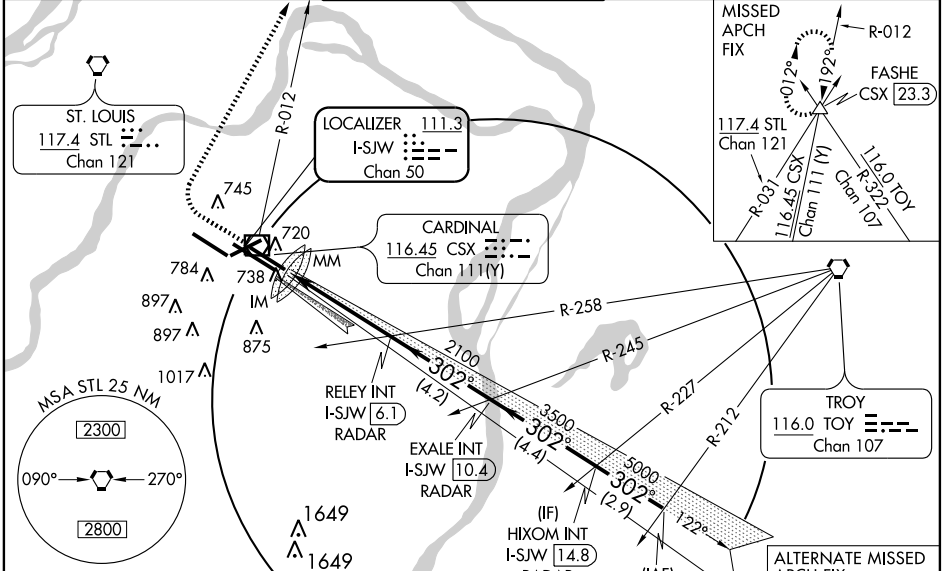
ST. LOUIS/ LAMBERT-ST. LOUIS INTL (STL)

LOC/DME I-SJW 111.3 Chan 50	APP CRS 302°	Rwy Idg TDZE Apt Elev	9003 605 618
--	------------------------	-----------------------------	---

▼ Rwy 30L and Rwy 30R separated by 1300' centerline to centerline. When ALS inoperative, increase S-ILS visibility Cat. E ¼ mile. Simultaneous close parallel approach authorized with LDA PRM RWY 30L or ILS PRM RWY 29. Dual VHF comm required. Procedure NA when glideslope not available. See additional requirements on PRM information page.

ALSF-2 	MISSED APPROACH: Climb to 1020 then climbing right turn to 3000 via heading 030° and CSX VOR/DME R-012 to FASHE INT/CSX 23.3 DME and hold.
------------	--

ATIS 125.025 379.925	ST. LOUIS APP CON 133.55 338.25	ST. LOUIS TOWER N 120.05 284.6 S 118.5 257.7 W 132.475 239.275 PRM 134.925 278.3	GND CON 121.9 348.6 (Inbound) 121.65 387.05 (Outbound) 118.925 227.125 (West)	CLNC DEL 119.5 363.1
--------------------------------	---	---	---	--------------------------------



ELEV 618	D	Rwy 6-24 7602 X 150 Rwy 11-29 9001 X 150 Rwy 12L-30R 9003 X 150 Rwy 12R-30L 11019 X 200			
1020	3000	CSX R-012 116.45	FASHE Δ	*When assigned by ATC, intercept glidepath at EXALE, 3500; or HIXOM, 5000.	
RELEY INT I-SJW (6.1) RADAR	EXALE INT I-SJW (10.4) RADAR	HIXOM INT I-SJW (14.8) RADAR	TYRSH INT I-SJW (17.7) RADAR		
2100	3500*	5000*			
0.1	0.3	4.1 NM	4.2 NM	4.4 NM	2.9 NM
CATEGORY	A	B	C	D	E
S-ILS 30R	805/18 200 (200-½)				805/24 200 (200-½)

NC-3, 19 NOV 2009 to 17 DEC 2009

NC-3, 19 NOV 2009 to 17 DEC 2009