

ST. LOUIS, MISSOURI

AL-360 (FAA)

ILS PRM RWY 12L (CAT III)

(SIMULTANEOUS CLOSE PARALLEL)

ST. LOUIS/LAMBERT-ST. LOUIS INTL (STL)

LOC/DME I-LDZ <b>108.9</b> Chan 26	APP CRS <b>122°</b>	Rwy Idg TDZE Apt Elev	<b>9003</b> <b>541</b> <b>618</b>
--	------------------------	-----------------------------	---

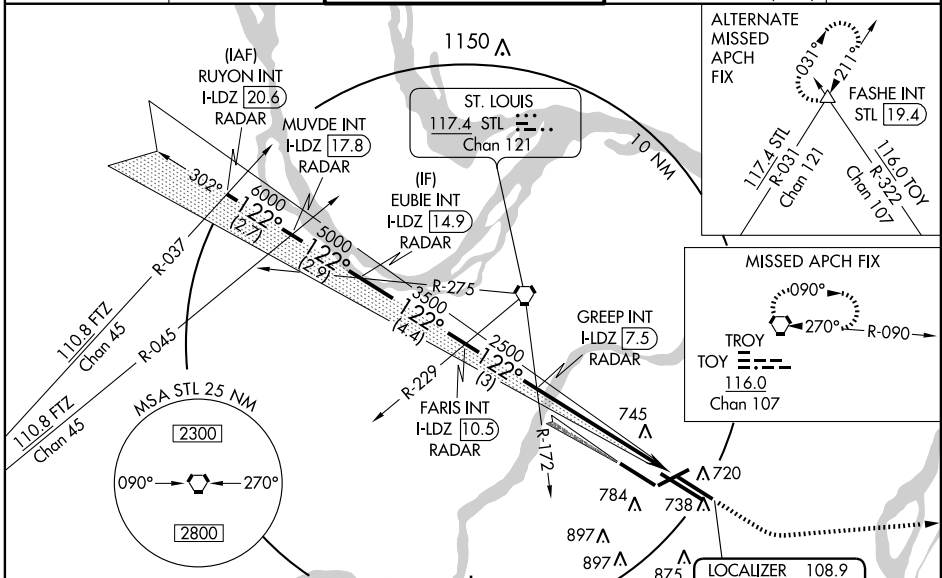
**▼** Procedure not authorized when glideslope not available.  
Dual VHF comm required.

**▲ NA** Disregard MM and IM indications.  
See additional requirements on PRM information page.  
Simultaneous close parallel approach authorized with ILS PRM RWY 11, ILS PRM RWY 11 (CAT II), and ILS PRM RWY 11 (CAT III).

ALSF-2

MISSED APPROACH: Climb to 2500 then climbing left turn to 3000 direct TOY VORTAC and hold.

ATIS <b>125.025 379.925</b>	ST. LOUIS APP CON <b>133.55 338.25</b>	ST. LOUIS TOWER N <b>120.05 284.6</b> S <b>118.5 257.7</b> W <b>132.475 239.275</b> PRM <b>134.925</b>	GND CON <b>121.9 348.6</b> (Inbound) <b>121.65 387.05</b> (Outbound) <b>118.925 227.125</b> (West)	CLNC DEL <b>119.5 363.1</b>
--------------------------------	---	---	---	--------------------------------

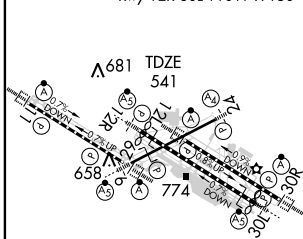


NC-3, 19 NOV 2009 to 17 DEC 2009

NC-3, 19 NOV 2009 to 17 DEC 2009

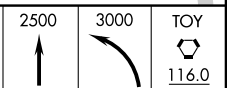
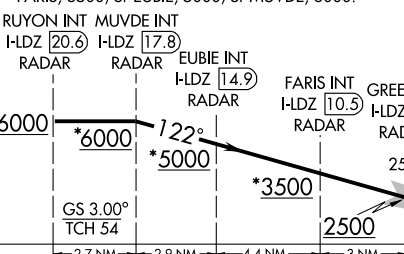
ELEV 618	<b>D</b>
----------	----------

Rwy 6-24 7602 X 150  
Rwy 11-29 9001 X 150  
Rwy 12L-30R 9003 X 150  
Rwy 12R-30L 11019 X 150



### RADAR and DME REQUIRED

\*When assigned by ATC, intercept glidepath at FARIS, 3500; or EUBIE, 5000; or MUVDE, 6000.



VGSI and ILS glidepath not coincident

CATEGORY	A	B	C	D
S-ILS 12L		CAT IIIa	RVR 07	
S-ILS 12L		CAT IIIb	RVR 06	
S-ILS 12L		CAT IIIc	NA	

### CATEGORY III ILS - SPECIAL AIRCREW & AIRCRAFT CERTIFICATION REQUIRED

HIRL all Rwys  
REIL Rwys 12L and 30L  
TDZ/CL Rwys 11, 12L, 12R, 29, and 30R