

ST. LOUIS, MISSOURI

AL-360 (FAA)

ILS PRM RWY 12L (CAT II)

(SIMULTANEOUS CLOSE PARALLEL)

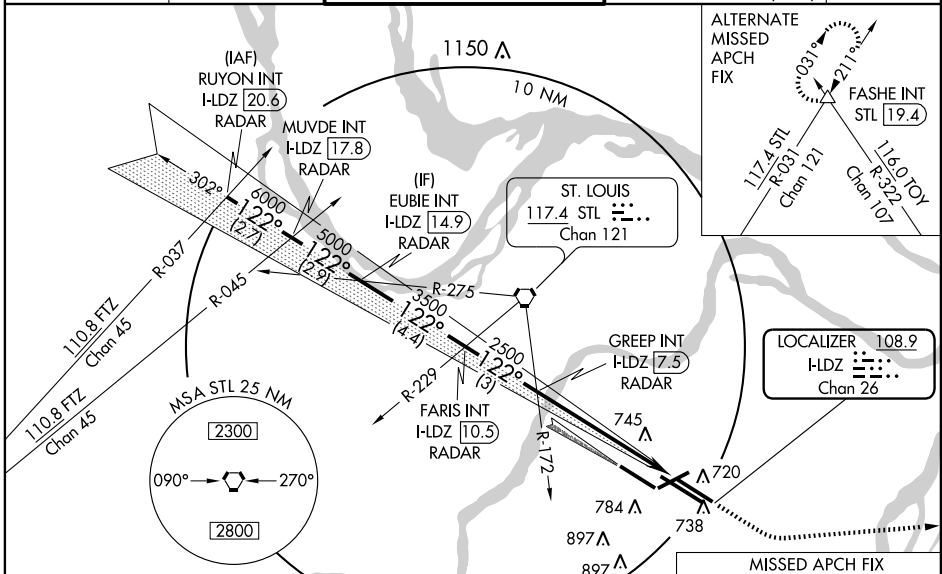
ST. LOUIS/LAMBERT-ST. LOUIS INTL (STL)

LOC/DME I-LDZ	APP CRS	Rwy Idg	9003
108.9	122°	TDZE	541
Chan 26		Apt Elev	618

Procedure not authorized when glideslope not available.  
 Dual VHF comm required.  
 Disregard MM and IM indications.  
 See additional requirements on PRM information page.  
 Simultaneous close parallel approach authorized with ILS PRM RWY 11, ILS PRM RWY 11 (CAT II), and ILS PRM RWY 11 (CAT III).

ALSF-2  
 MISSED APPROACH: Climb to 2500 then climbing left turn to 3000 direct TOY VORTAC and hold.

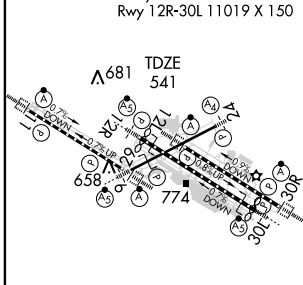
ATIS	ST. LOUIS APP CON	ST. LOUIS TOWER	GND CON	CLNC DEL
125.025 379.925	133.55 338.25	N 120.05 284.6 S 118.5 257.7 W 132.475 239.275 PRM 134.925	121.9 348.6 (Inbound) 121.65 387.05 (Outbound) 118.925 227.125 (West)	119.5 363.1



NC-3, 19 NOV 2009 to 17 DEC 2009

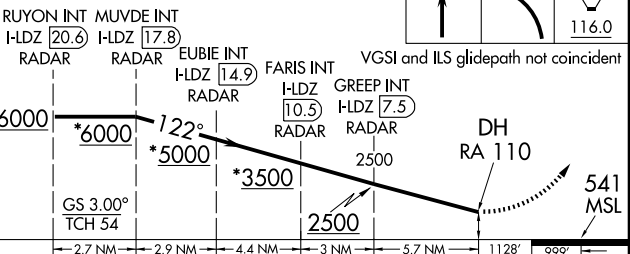
NC-3, 19 NOV 2009 to 17 DEC 2009

ELEV 618	D
Rwy 6-24 7602 X 150	
Rwy 11-29 9001 X 150	
Rwy 12L-30R 9003 X 150	
Rwy 12R-30L 11019 X 150	



### RADAR and DME REQUIRED

\*When assigned by ATC, intercept glidepath at FARIS, 3500; or EUBIE, 5000; or MUVDE, 6000.



CATEGORY	A	B	C	D
S-ILS 12L	641/12 100 RA 110			

**CATEGORY II ILS - SPECIAL AIRCREW & AIRCRAFT CERTIFICATION REQUIRED**

HIRL all Rwys  
 REIL Rwys 12L and 30L  
 TDZ/CL Rwys 11, 12L, 12R, 29, and 30R

ST. LOUIS, MISSOURI 38°45'N-90°22'W ST. LOUIS/LAMBERT-ST. LOUIS INTL (STL)  
 Orig-A 09295 ILS PRM RWY 12L (CAT II) (SIMULTANEOUS CLOSE PARALLEL)