

ST. LOUIS, MISSOURI

AL-360 (FAA)

ILS PRM RWY 11 (SIMULTANEOUS CLOSE PARALLEL)

ST. LOUIS/LAMBERT-ST. LOUIS INTL (STL)

LOC/DME I-OGZ 111.95 Chan 56(Y)	APP CRS 122°	Rwy Idg TDZE Apt Elev	9001 618 618
---	------------------------	-----------------------------	---

(SIMULTANEOUS CLOSE PARALLEL)
ST. LOUIS/LAMBERT-ST. LOUIS INTL (STL)

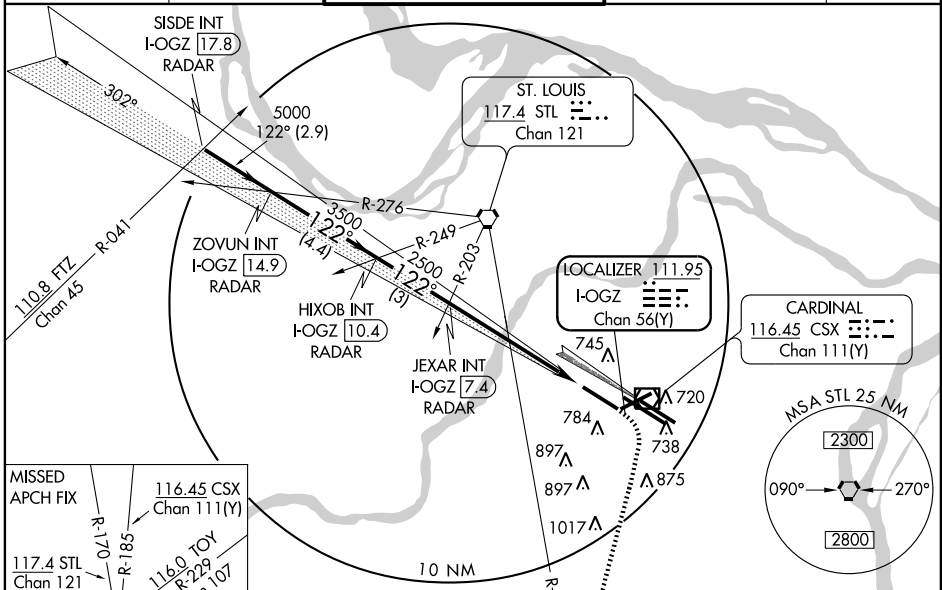
⚠ Dual VHF comm required. Disregard MM and IM indications.
⚠ NA See additional requirements on PRM information page.
For inoperative ALSF-2, increase S-ILS Cat E visibility to RVR 4000.
Simultaneous close parallel approach authorized with ILS PRM RWY 12L.
Procedure not authorized when glideslope not available.

ALSF-2



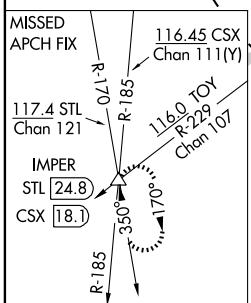
MISSED APPROACH: Climb to 1020 then climbing right turn to 3000 via heading 187° and STL R-170 to IMPER INT/STL 24.8 DME and hold.

ATIS 125.025 379.925	ST. LOUIS APP CON 133.55 338.25	ST. LOUIS TOWER N 120.05 284.6 S 118.5 257.7 W 132.475 239.275 PRM 125.15	GND CON 121.9 348.6 (Inbound) 121.65 387.05 (Outbound) 118.925 227.125 (West)	CLNC DEL 119.5 363.1
--------------------------------	---	--	---	--------------------------------



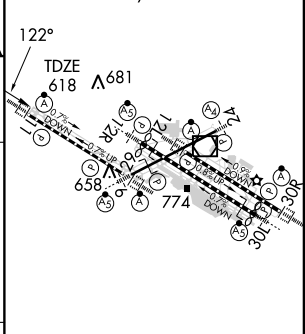
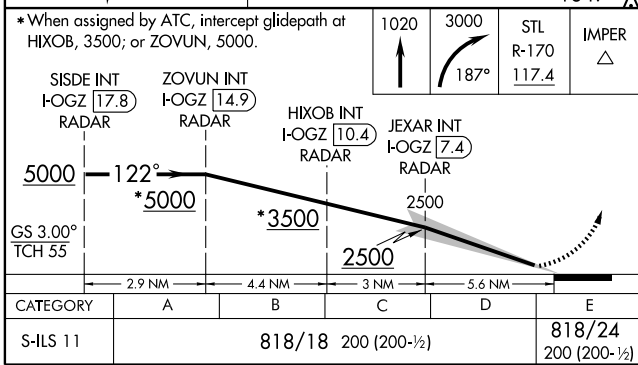
NC-3, 19 NOV 2009 to 17 DEC 2009

NC-3, 19 NOV 2009 to 17 DEC 2009



RADAR and DME REQUIRED

ELEV 618	D
Rwy 6-24 7602 X 150 Rwy 11-29 9001 X 150 Rwy 12L-30R 9003 X 150 Rwy 12R-30L 11019 X 150	



CATEGORY	A	B	C	D	E
S-ILS 11		818/18	200 (200-1/2)		818/24 200 (200-1/2)

ST. LOUIS, MISSOURI
Orig-B 09295

38°45'N-90°22'W

ST. LOUIS/LAMBERT-ST. LOUIS INTL (STL)
ILS PRM RWY 11 (SIMULTANEOUS CLOSE PARALLEL)

HIRL all Rwys
REL Rwys 12L and 30L
TDZ/CL Rwys 11, 12L, 12R, 29, and 30R