

ST. LOUIS, MISSOURI

AL-360 (FAA)

ILS PRM RWY 11 (CAT III) (SIMULTANEOUS CLOSE PARALLEL)

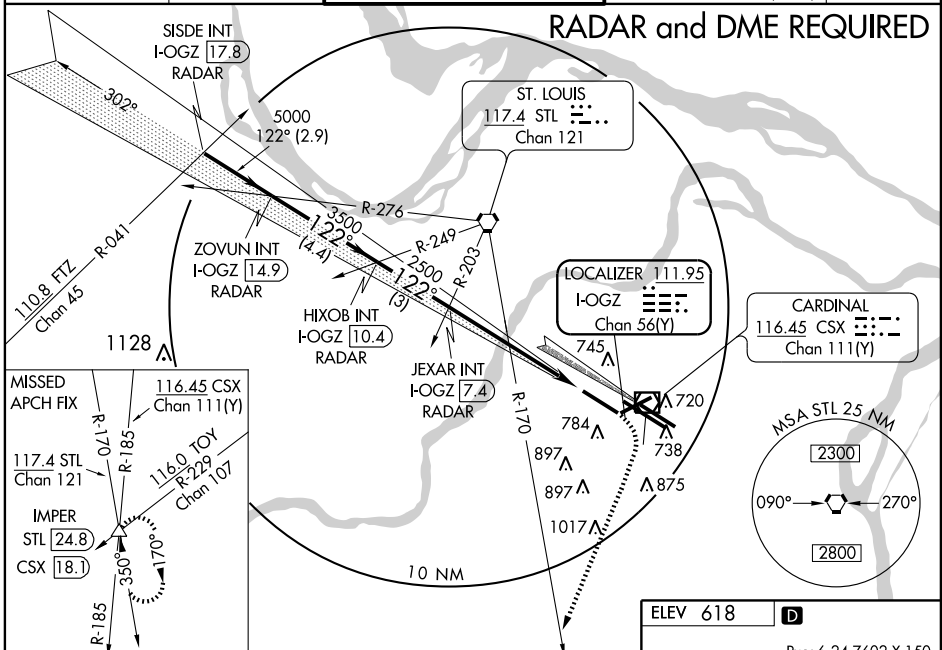
ST. LOUIS/LAMBERT-ST. LOUIS INTL (STL)

LOC/DME I-OGZ 111.95 Chan 56(Y)	APP CRS 122°	Rwy Idg TDZE Apt Elev	9001 618 618
---	------------------------	-----------------------------	---

▽ Dual VHF comm required.
△NA Disregard MM and IM indications.
See additional requirements on PRM information page.
Simultaneous close parallel approach authorized with ILS PRM RWY 12L.
Procedure not authorized when glideslope not available.

ALS-2
MISSED APPROACH: Climb to 1020 then climbing right turn to 3000 via heading 187° and STL R-170 to IMPER INT/STL 24.8 DME and hold.

ATIS 125.025 379.925	ST. LOUIS APP CON 133.55 338.25	ST. LOUIS TOWER N 120.05 284.6 S 118.5 257.7 W 132.475 239.275 PRM 125.15	GND CON 121.9 348.6 (Inbound) 121.65 387.05 (Outbound) 118.925 227.125 (West)	CLNC DEL 119.5 363.1
--------------------------------	---	---	---	--------------------------------

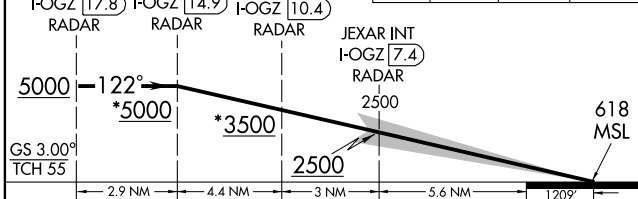


NC-3, 19 NOV 2009 to 17 DEC 2009

NC-3, 19 NOV 2009 to 17 DEC 2009

*When assigned by ATC, intercept glidepath at HIXOB, 3500; or ZOVUN, 5000.

1020	3000	STL R-170	IMPER △
↑	↷ 187°	117.4	



CATEGORY	A	B	C	D
S-ILS 11		CAT IIIa	RVR 07	
S-ILS 11		CAT IIIb	RVR 06	
S-ILS 11		CAT IIIc	NA	

CATEGORY III ILS - SPECIAL AIRCREW & AIRCRAFT CERTIFICATION REQUIRED

ELEV 618 **D**

Rwy 6-24 7602 X 150
Rwy 11-29 9001 X 150
Rwy 12L-30R 9003 X 150
Rwy 12R-30L 11019 X 150

TDZE 618
658
774
301

HIRL all Rwws
REIL Rwws 12L and 30L
TDZ/CL Rwws 11, 12L, 12R, 29, and 30R

ST. LOUIS, MISSOURI
Orig-B 09295

38°45'N-90°22'W

ST. LOUIS/LAMBERT-ST. LOUIS INTL (STL)

ILS PRM RWY 11 (CAT III) (SIMULTANEOUS CLOSE PARALLEL)