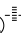


LOC/DME I-STL <b>110.3</b> Chan <b>40</b>	APP CRS <b>243°</b>	Rwy Idg TDZE Apt Elev	<b>7602</b> <b>534</b> <b>604</b>
---	------------------------	-----------------------------	---

# ILS or LOC RWY 24

ST. LOUIS/LAMBERT-ST. LOUIS INTL (STL)

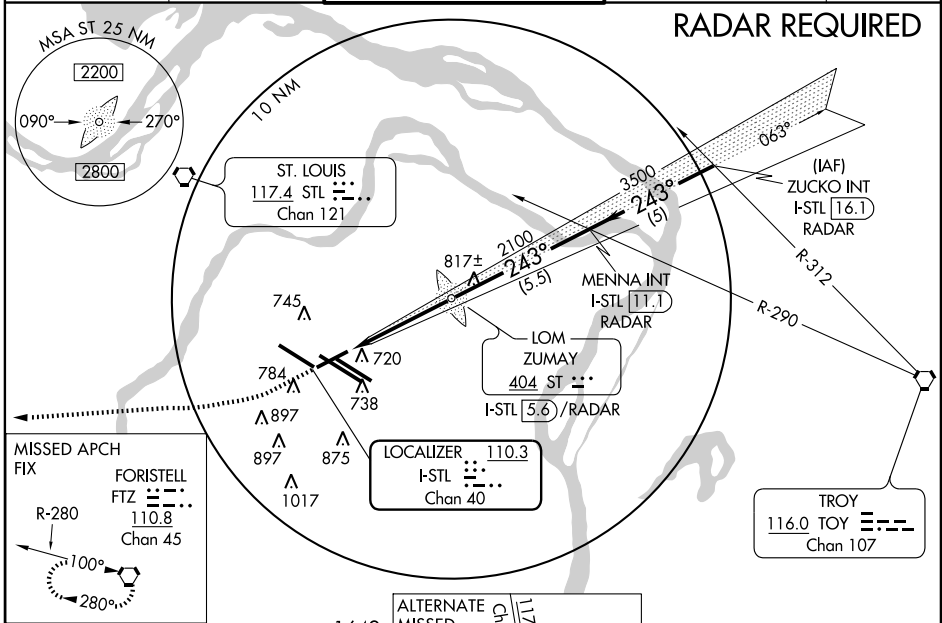
**▼** Inoperative table does not apply to S-LOC 24 Cat C. When MALS inoperative, increase visibility S-LOC 24 Cat E ¼ mile.

MALS 

MISSED APPROACH: Climb to 3000 then right turn direct FTZ VORTAC and hold.

ATIS <b>125.025 379.925</b>	ST. LOUIS APP CON <b>133.55 338.25</b>	ST. LOUIS TOWER N <b>120.05 284.6</b> S <b>118.5 257.7</b> W <b>132.475 239.275</b>	GND CON <b>121.9 348.6</b> (Inbound) <b>121.65 387.05</b> (Outbound) <b>118.925 227.125</b> (West)	CLNC DEL <b>119.5 363.1</b>
--------------------------------	---	---	---	--------------------------------

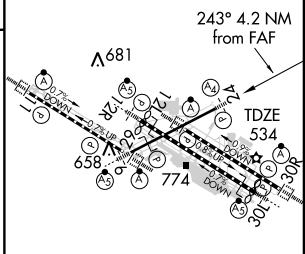
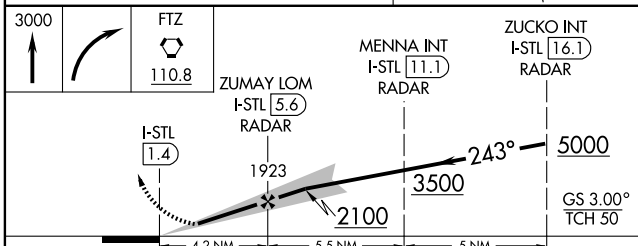
## RADAR REQUIRED



NC-3, 19 NOV 2009 to 17 DEC 2009

NC-3, 19 NOV 2009 to 17 DEC 2009

MERAM $\Delta$ STL 18.1	1649 $\Delta$	1649 $\Delta$	ELEV 604 <b>D</b>
			Rwy 6-24 7602 X 150 Rwy 11-29 9001 X 150 Rwy 12L-30R 9003 X 150 Rwy 12R-30L 11019 X 200



CATEGORY	A	B	C	D	E	
S-ILS 24	784/40 250 (200-¾)					
S-LOC 24	1000/40 466 (400-¾)	1000/60 466 (400-1¼)	1000-1½ 466 (400-1½)			
HRL all Rwys REIL Rwys 12L and 30L TDZ/CL Rwys 11, 12L, 12R, 29, and 30R FAF to MAP 4.2 NM						
Knots		60	90	120	150	180
Min:Sec		4:12	2:48	2:06	1:41	1:24