

ST. LOUIS, MISSOURI

AL-360 (FAA)

LOC/DME I-LMR <b>109.7</b> Chan <b>34</b>	APP CRS <b>122°</b>	Rwy Idg 12R <b>10552</b> TDZE <b>540</b> Apt Elev <b>618</b>	Rwy Idg 12L <b>9003</b> TDZE <b>541</b> Apt Elev <b>618</b>
---	------------------------	--	---

# ILS or LOC RWY 12R

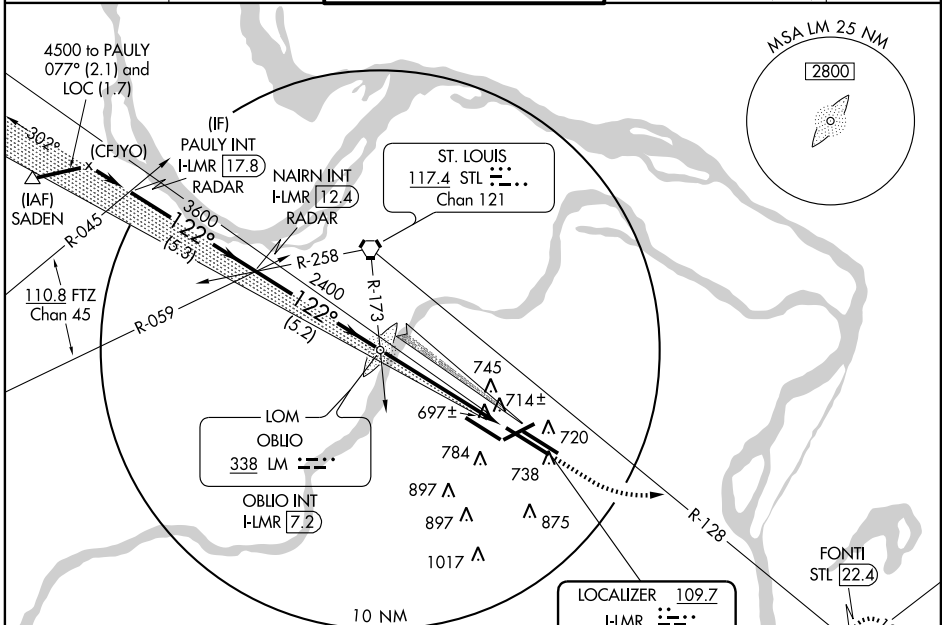
ST. LOUIS/LAMBERT-ST. LOUIS INTL (STL)

**▼** Inoperative table does not apply.  
Simultaneous approach authorized with LDA/DME Rwy 12L approach.

MALSR Rwy 12R ALSF-2 Rwy 12L

MISSED APPROACH: Climb to 1500 then climbing left turn to 5000 intercept STL VORTAC R-128 to FONTI INT/STL 22.4 DME and hold.

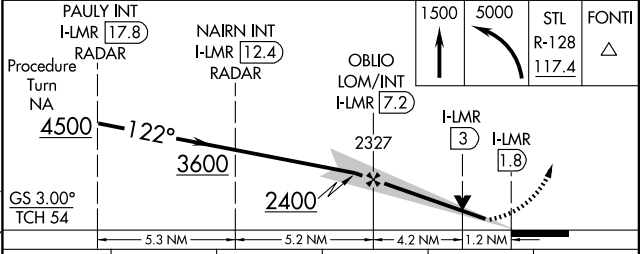
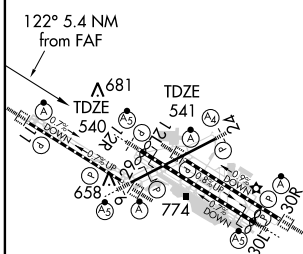
ATIS <b>125.025 379.925</b>	ST. LOUIS APP CON <b>133.55 338.25</b>	ST. LOUIS TOWER N <b>120.05 284.6</b> S <b>118.5 257.7</b> W <b>132.475 239.275</b>	GND CON <b>121.9 348.6</b> (Inbound) <b>121.65 387.05</b> (Outbound) <b>118.925 227.125</b> (West)	CLNC DEL <b>119.5 363.1</b>
--------------------------------	---	---	---	--------------------------------



NC-3, 19 NOV 2009 to 17 DEC 2009

NC-3, 19 NOV 2009 to 17 DEC 2009

ELEV <b>618</b>	<b>D</b>
Rwy 6-24 7602 X 150 Rwy 11-29 9001 X 150 Rwy 12L-30R 9003 X 150 Rwy 12R-30L 11019 X 200	



HIRL all Rwys REIL Rwys 12L and 30L TDZ/CL Rwys 11, 12L, 12R, 29, and 30R FAF to MAP 5.4 NM					
Knots	60	90	120	150	180
Min:Sec	5:24	3:36	2:42	2:10	1:48
CATEGORY	A	B	C	D	E
S-ILS 12R	790/40 250 (200-34)				
S-LOC 12R	960/40 420 (400-34)			960/50 420 (400-1)	
SIDESTEP RWY 12L	980-1 439 (400-1)		980-1½ 439 (400-1½)		980-2 439 (400-2)

ST. LOUIS, MISSOURI  
Amdt 21D 09295

38°45'N-90°22'W

# ILS or LOC RWY 12R

ST. LOUIS/LAMBERT-ST. LOUIS INTL (STL)