

LOC/DME I-OGZ 111.95 Chan 56(Y)	APP CRS 122°	Rwy Idg TDZE Apt Elev	9001 618 618
--	------------------------	-----------------------------	---

ILS or LOC RWY 11

ST. LOUIS/LAMBERT-ST. LOUIS INTL (STL)

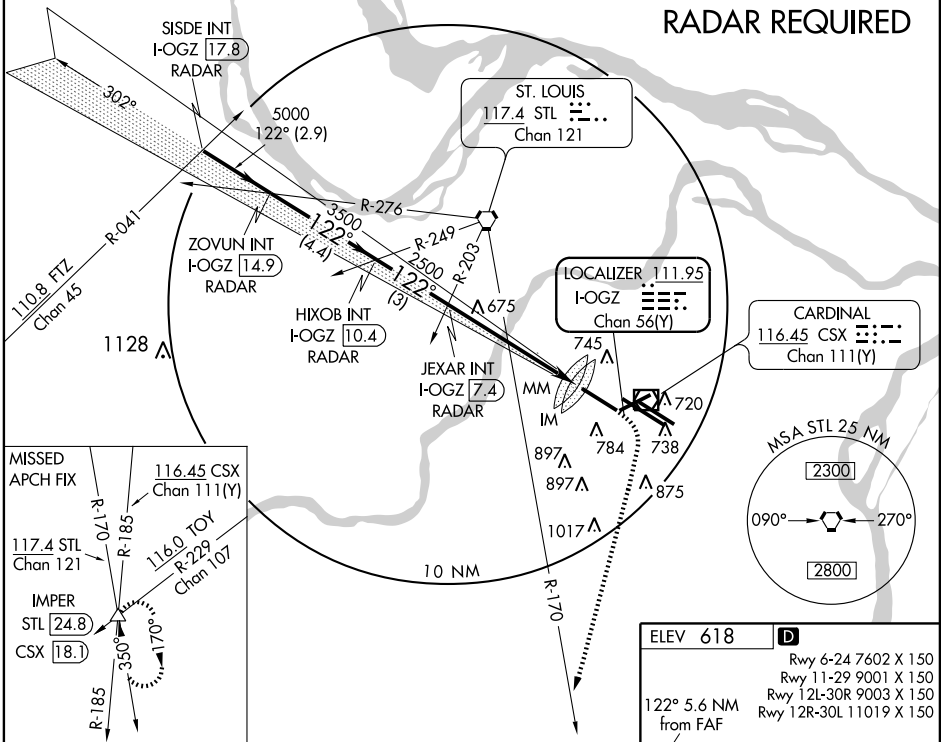
V For inoperative ALSF-2, increase S-ILS Cat E visibility to RVR 4000, and S-LOC Cat E visibility to RVR 6000.



MISSED APPROACH: Climb to 1020 then climbing right turn to 3000 via heading 187° and STL R-170 to IMPER INT/STL 24.8 DME and hold.

ATIS 125.025 379.925	ST. LOUIS APP CON 133.55 338.25	ST. LOUIS TOWER N 120.05 284.6 S 118.5 257.7 W 132.475 239.275	GND CON 121.9 348.6 (Inbound) 121.65 387.05 (Outbound) 118.925 227.125 (West)	CLNC DEL 119.5 363.1
--------------------------------	---	---	---	--------------------------------

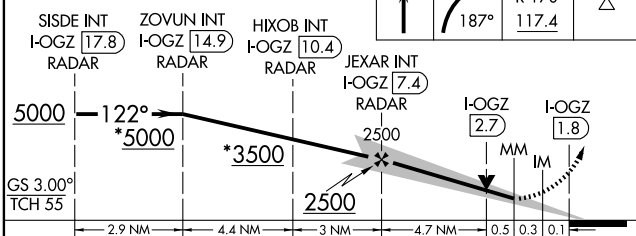
RADAR REQUIRED



NC-3, 19 NOV 2009 to 17 DEC 2009

NC-3, 19 NOV 2009 to 17 DEC 2009

*When assigned by ATC, intercept glidepath at HIXOB, 3500; or ZOVUN, 5000.



ELEV 618 **D**

Rwy 6-24 7602 X 150
Rwy 11-29 9001 X 150
Rwy 12L-30R 9003 X 150
Rwy 12R-30L 11019 X 150

122° 5.6 NM from FAF

TDZE 618 Δ 681

HIRL all Rwys
REIL Rwys 12L and 30L
TDZ/CL Rwys 11, 12L, 12R, 29, and 30R

FAF to MAP 5.6 NM

Knots	60	90	120	150	180
Min:Sec	5:36	3:44	2:48	2:14	1:52

CATEGORY	A	B	C	D	E
S-ILS 11	818/18 200 (200-½)				818/24 200 (200-½)
S-LOC 11	980/24 362 (400-½)		980/40 362 (400-¾)		