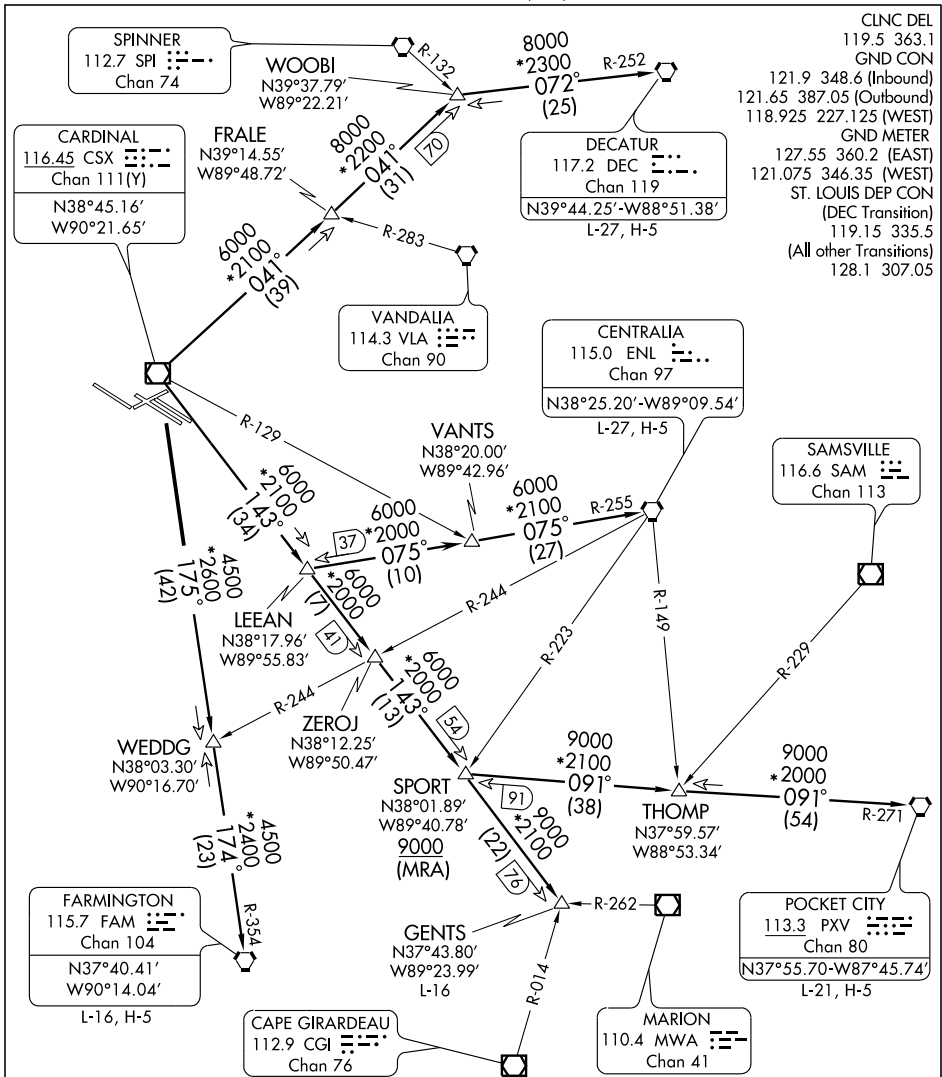


TURBO FIVE DEPARTURE

SL-360 (FAA)

LAMBERT-ST. LOUIS INTL (STL)
ST. LOUIS, MISSOURI



CLNC DEL
119.5 363.1
GND CON
121.9 348.6 (Inbound)
121.65 387.05 (Outbound)
118.925 227.125 (WEST)
GND METER
127.55 360.2 (EAST)
121.075 346.35 (WEST)
ST. LOUIS DEP CON
(DEC Transition)
119.15 335.5
(All other Transitions)
128.1 307.05

NC-3, 19 NOV 2009 to 17 DEC 2009

NC-3, 19 NOV 2009 to 17 DEC 2009

TAKE-OFF MINIMUMS

Rwy 6, 12L, 12R, 24, 30L: Standard.

Rwy 30R: 200-1¼ or standard with minimum climb of 276' per NM to 800.

(NOTES CONTINUED ON FOLLOWING PAGE)

NOTE: For Turboprop/Prop aircraft only.

NOTE: RADAR required.

NOTE: Chart not to scale.

(NARRATIVE ON FOLLOWING PAGE)

TURBO FIVE DEPARTURE