

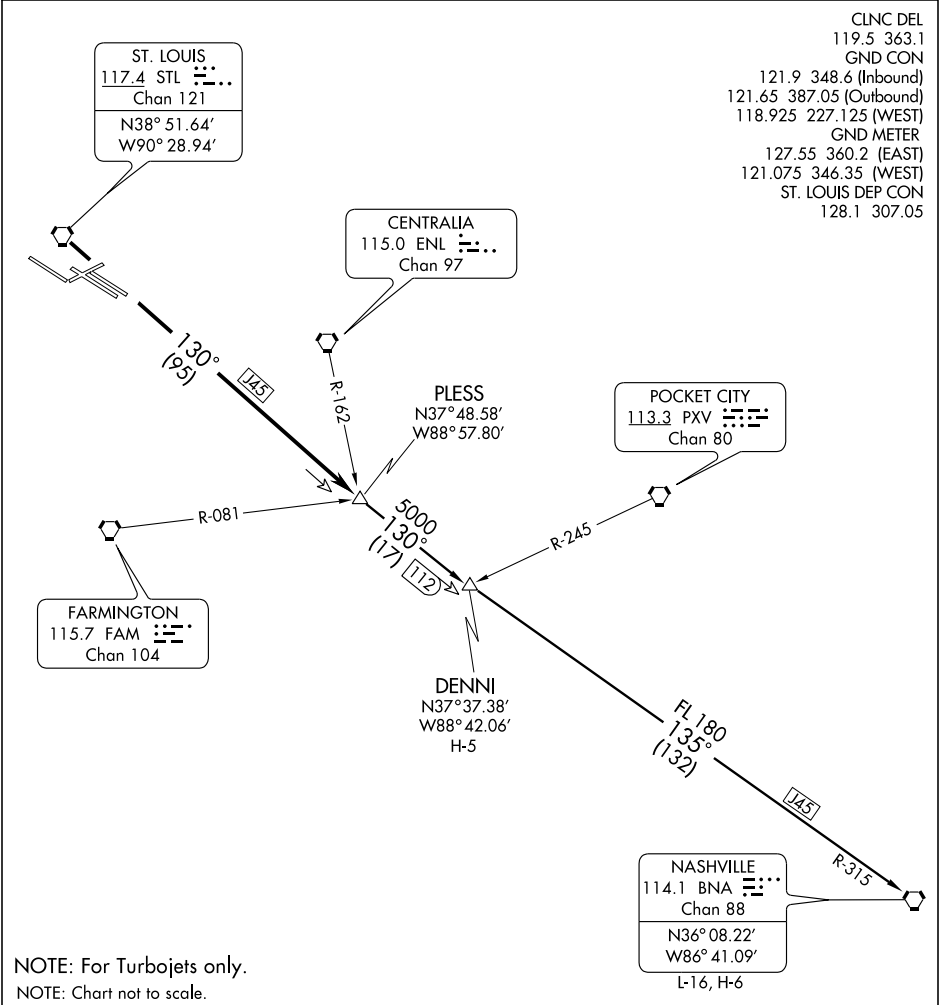
PLESS ONE DEPARTURE

SL-360 (FAA)

ST. LOUIS/LAMBERT-ST. LOUIS INTL (STL)
ST. LOUIS, MISSOURI

NC-3, 19 NOV 2009 to 17 DEC 2009

NC-3, 19 NOV 2009 to 17 DEC 2009



NOTE: For Turbojets only.
NOTE: Chart not to scale.

DEPARTURE ROUTE DESCRIPTION

Fly assigned heading for vector to appropriate route. From over STL VORTAC via STL R-130 to PLESS INT, then via (transition) or (assigned route). Departures climb and maintain 5000 feet or assigned altitude. Expect clearance to filed altitude 10 minutes after departure.

DENNI TRANSITION (PLESS1.DENNI): From over PLESS INT via STL R-130 to DENNI INT.

NASHVILLE TRANSITION (PLESS1.BNA): From over PLESS INT via STL R-130 and BNA R-315 to BNA VORTAC.