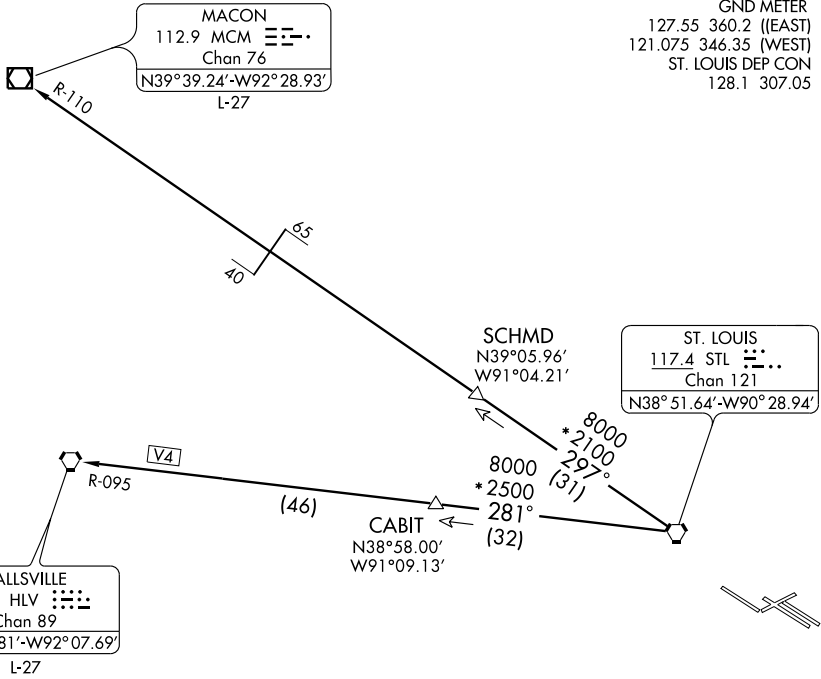


# OZARK THREE DEPARTURE

CINC DEL 119.5 363.1  
 GND CON  
 121.9 348.6 (Inbound)  
 121.65 387.05 (Outbound)  
 118.925 227.125 (WEST)  
 GND METER  
 127.55 360.2 ((EAST)  
 121.075 346.35 (WEST)  
 ST. LOUIS DEP CON  
 128.1 307.05



NC-3, 19 NOV 2009 to 17 DEC 2009

NC-3, 19 NOV 2009 to 17 DEC 2009

**TAKEOFF MINIMUMS:** All runways standard.

**NOTE:** DME and RADAR REQUIRED

**NOTE:** Chart not to scale.

## DEPARTURE ROUTE DESCRIPTION

Fly assigned heading for vector to appropriate route. Turbojets: Maintain 5000 feet or higher assigned altitude. All others: Maintain 3000 feet or higher assigned altitude. Expect clearance to filed altitude 10 minutes after departure.

**HALLSVILLE TRANSITION (OZARK3.HLV):** From over STL VORTAC via STL R-281 and HLV R-095 to HLV VORTAC.

**MACON TRANSITION (OZARK3.MCM):** From over STL VORTAC via STL R-297 and MCM R-110 to MCM VOR/DME.