

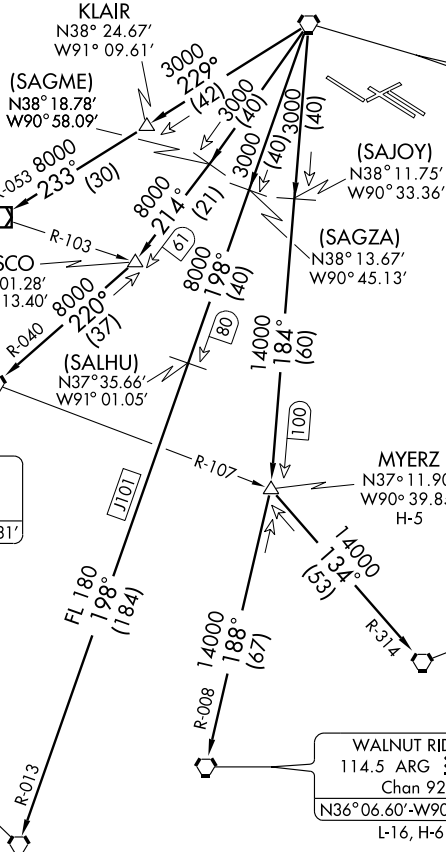
LINDBERGH TWO DEPARTURE

CLNC DEL 119.5 363.1
GND CON
121.9 348.6 (Inbound)
121.65 387.05 (Outbound)
118.925 227.125 (WEST)
GND METER
127.55 360.2 (EAST)
121.075 346.35 (WEST)
ST. LOUIS DEP CON
128.1 307.05

VICHY
117.7 VIH :...
Chan 124
N38°09.24'-W91°42.41'
L-16, H-5

MAPLES
113.4 MAP :...
Chan 81
N37°35.45'-W91°47.31'
L-16

LITTLE ROCK
113.9 LIT :...
Chan 86
N34°40.66'-W92°10.83'
L-18, H-6



ST. LOUIS
117.4 STL :...
Chan 121
N38° 51.64'-W90° 28.94'

MALDEN
111.2 MAW :...
Chan 49
N36° 33.31'-W89° 54.68'
L-16, H-6

WALNUT RIDGE
114.5 ARG :...
Chan 92
N36° 06.60'-W90° 57.22'
L-16, H-6

NC-3, 19 NOV 2009 to 17 DEC 2009

NC-3, 19 NOV 2009 to 17 DEC 2009

NOTE: Chart not to scale.

DEPARTURE ROUTE DESCRIPTION

Fly assigned heading for vector to appropriate route. Turbojet departures climb and maintain 5000 feet or assigned altitude. Propeller driven departures climb and maintain 3000 feet or assigned altitude. Expect clearance to filed altitude 10 minutes after departure.

- LITTLE ROCK TRANSITION (LINDY2.LIT):** From over STL VORTAC via STL R-198 and LIT R-013 to LIT VORTAC.
- MALDEN TRANSITION (LINDY2.MAW):** From over STL VORTAC via STL R-184 to MYERZ INT, then via MAW R-314 to MAW VORTAC.
- MAPLES TRANSITION (LINDY2.MAP):** From over STL VORTAC via STL R-214 to WESCO INT, then via MAP R-040 to MAP VORTAC.
- MYERZ TRANSITION (LINDY2.MYERZ):** From over STL VORTAC via STL R-184 to MYERZ INT.
- VICHY TRANSITION (LINDY2.VIH):** From over STL VORTAC via STL R-229 to KLAIR INT, then via VIH R-053 to VIH VOR/DME.
- WALNUT RIDGE TRANSITION (LINDY2.ARG):** From over STL VORTAC via STL R-184 to MYERZ INT, then via ARG R-008 to ARG VORTAC.