

CARDS SEVEN DEPARTURE

SL-360 (FAA)

ST. LOUIS/LAMBERT-ST. LOUIS INTL (STL)

ST. LOUIS, MISSOURI

CLNC DEL
 119.5 363.1
 GND CON
 121.9 348.6 (Inbound)
 121.65 387.05 (Outbound)
 118.925 227.125 (WEST)
 GND METER
 127.55 360.2 (EAST)
 121.075 346.35 (WEST)
 ST. LOUIS DEP CON
 119.15 335.5

BRADFORD
 114.7 BDF
 Chan 94
 N41°09.58'-W89°35.27'
 L-27, H-5

TAKE-OFF MINIMUMS

Rwy 6, 12L, 12R, 24, 30L: Standard.

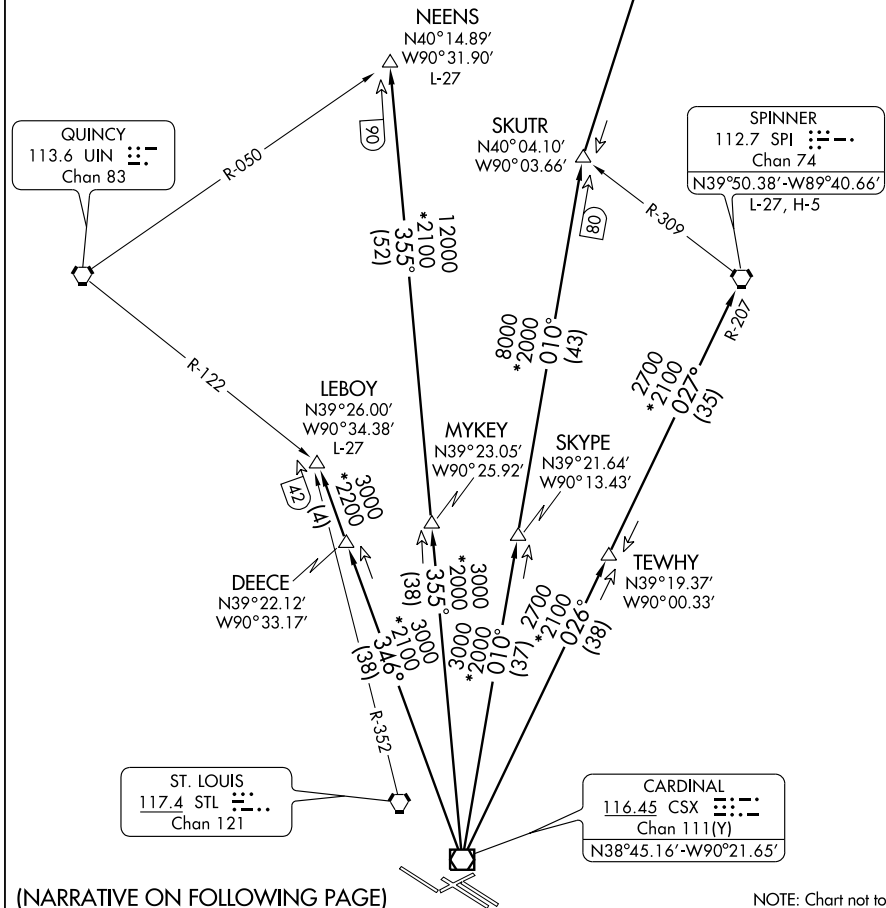
Rwy 30R: 200-1¼ or standard with minimum climb of 276' per NM to 800'.

NOTE: DME and RADAR required.

(NOTES CONTINUED ON FOLLOWING PAGE)

NC-3, 19 NOV 2009 to 17 DEC 2009

NC-3, 19 NOV 2009 to 17 DEC 2009



CARDS SEVEN DEPARTURE