

WAAS CH <b>97638</b> <b>W24A</b>	APP CRS <b>239°</b>	Rwy Idg <b>6202</b> TDZE <b>237</b> Apt Elev <b>258</b>
--	------------------------	---

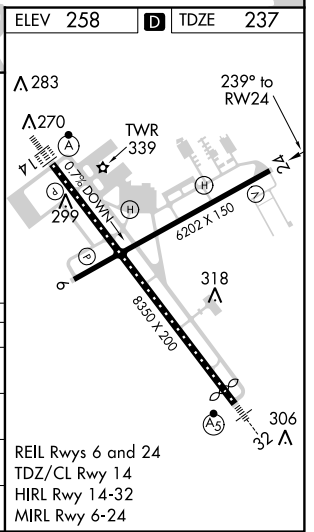
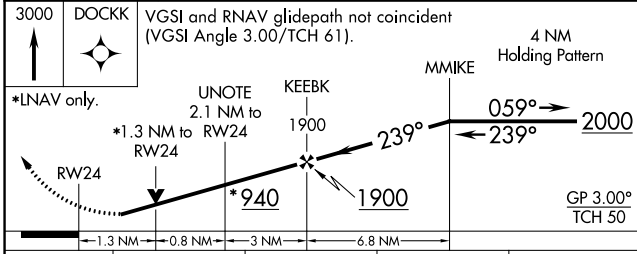
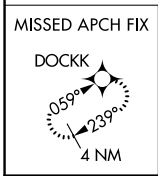
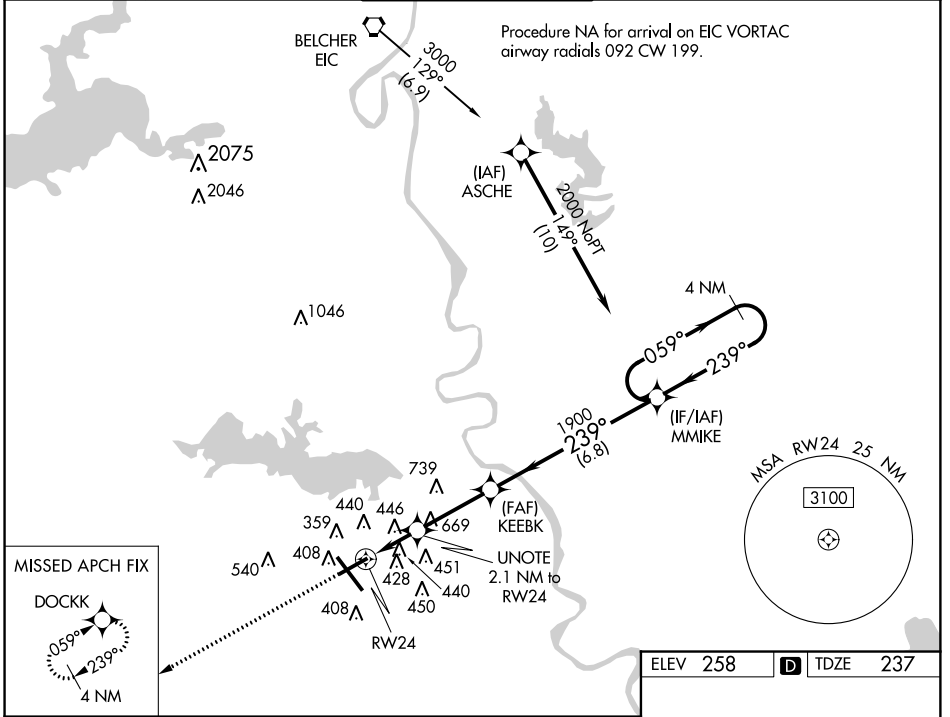
# RNAV (GPS) RWY 24

SHREVEPORT RGNL (SHV)

**⚠** DME/DME RNP-0.3 NA. Helicopter visibility reduction below 3/4 SM NA.  
 For uncompensated Baro-VNAV systems, LNAV/VNAV NA below -6°C (22°F) or above 54°C (130°F).  
**ASR**

MISSED APPROACH: Climb to 3000 direct DOCKK and hold.

ATIS <b>128.45</b>	SHREVEPORT APP CON <b>119.9 335.55</b>	SHREVEPORT TOWER <b>121.4 236.775</b>	GND CON <b>121.9 236.775</b>	CLNC DEL <b>124.65</b>
-----------------------	---	--	---------------------------------	---------------------------



CATEGORY	A	B	C	D
LPV DA		487-7/8	250 (300-7/8)	
LNAV/VNAV DA		749-1 3/4	512 (500-1 3/4)	
LNAV MDA	740-1	463 (500-1)	700-1 3/8	463 (500-1 3/8)
<b>C</b> CIRCLING	740-1 482 (500-1)	760-1 502 (600-1)	980-2 722 (800-2)	1100-2 3/4 842 (900-2 3/4)

SC-4, 27 APR 2017 to 25 MAY 2017

SC-4, 27 APR 2017 to 25 MAY 2017