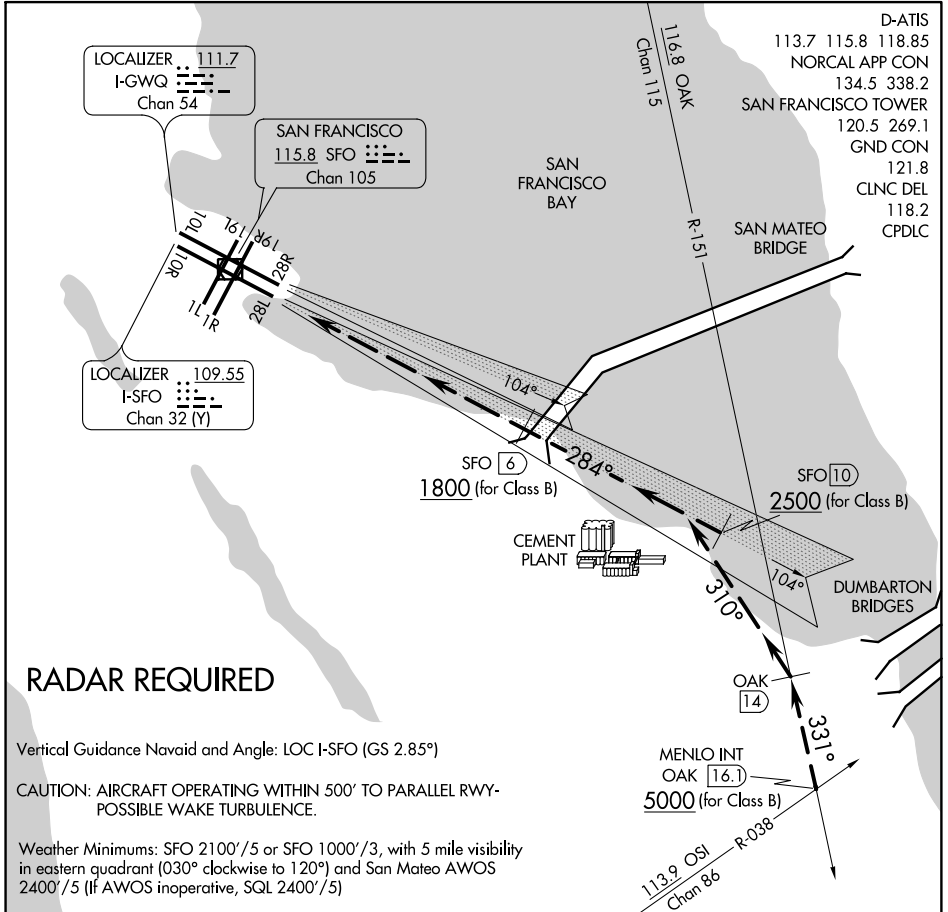


TIPP TOE VISUAL RWY 28L/R

AL-375 (FAA)

SAN FRANCISCO INTL (SFO)
SAN FRANCISCO, CALIFORNIA



SW-2, 12 OCT 2017 to 09 NOV 2017

SW-2, 12 OCT 2017 to 09 NOV 2017

RADAR REQUIRED

Vertical Guidance Navaid and Angle: LOC I-SFO (GS 2.85°)

CAUTION: AIRCRAFT OPERATING WITHIN 500' TO PARALLEL RWY- POSSIBLE WAKE TURBULENCE.

Weather Minimums: SFO 2100'/5 or SFO 1000'/3, with 5 mile visibility in eastern quadrant (030° clockwise to 120°) and San Mateo AWOS 2400'/5 (If AWOS inoperative, SQL 2400'/5)

1	2	3	4	5	6	7	8	9	10	11	12	13	14	15	16
---	---	---	---	---	---	---	---	---	----	----	----	----	----	----	----

TIPP TOE VISUAL APPROACH RUNWAY 28L/R

When visual approaches to Runways 28L/R are in progress, arriving aircraft may be vectored into a position for a straight-in visual approach to Runways 28L/R via the I-SFO Localizer.

Aircraft should cross the OAK R-151/16.1 DME (MENLO INT) at or above 5000 and the San Mateo Bridge at or above 1800.

NOTE: Closely spaced parallel visual approaches may be in progress to Runway 28R utilizing the SFO R-095. In the event of a go-around on Runway 28L, turn left heading 265°, or on Runway 28R, turn right heading 310°, climb and maintain 3000, or as directed by Air Traffic Control.

TIPP TOE VISUAL RWY 28L/R

Amdt 1 22AUG13

37°37'N-122°23'W

SAN FRANCISCO, CALIFORNIA
SAN FRANCISCO INTL (SFO)