
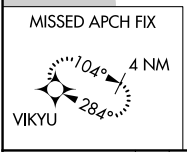
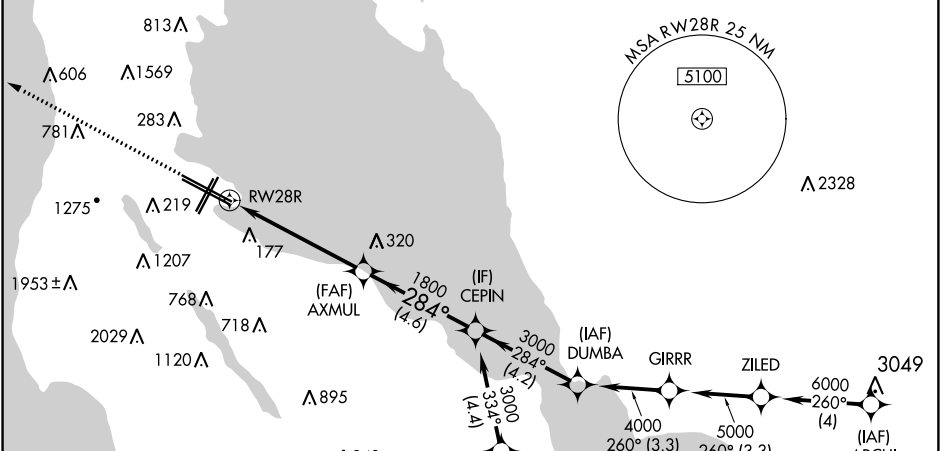


WAAS CH 48803 W28A	APP CRS 284°	Rwy Idg TDZE Apt Elev	11236 13 13
--	------------------------	-----------------------------	--

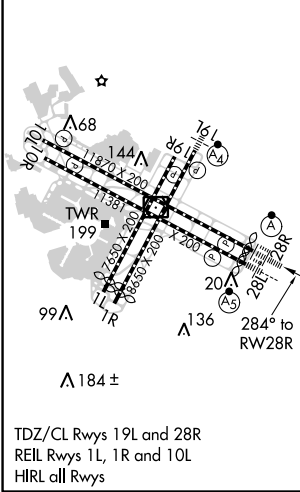
RNAV (GPS) Z RWY 28R

SAN FRANCISCO INTL (SFO)

<p>▽ Circling NA to Rwys 10L, 10R, 19L, and 19R. Circling Rwy 1L, 1R NA at night. ▲ For uncompensated Baro-VNAV systems, LNAV/VNAV NA below 3°C (38°F) or above 54°C (130°F). DME/DME RNP-0.3 NA. For inop ALSF, increase LNAV/VNAV visibility all Cats to 2½ mile; increase LNAV visibility Cats C and D to 2 mile.</p>	<p>ALSF-2 </p>	<p>MISSED APPROACH: Climb to 3000 direct VIKYU and hold.</p>			
	<p>D-ATIS 113.7 115.8 118.85</p>	<p>NORCAL APP CON 134.5 338.2</p>	<p>SAN FRANCISCO TOWER 120.5 269.1</p>	<p>GND CON 121.8</p>	<p>CLNC DEL 118.2</p>



ELEV 13	D	TDZE 13
---------	----------	---------



TDZ/CL Rwys 19L and 28R
 REIL Rwys 1L, 1R and 10L
 HIRL all Rwys

RADAR REQUIRED

3000	VIKYU	VGSi and RNAV glidepath not coincident (VGSi Angle 3.00/TCH 68).			
*LNAV only		AXMUL	1800	284°	3000
		RW28R	1800	1800	GP 3.00° TCH 55
		-2.1 NM	3.3 NM	4.6 NM	
CATEGORY	A	B	C	D	
LPV DA		213/18	200 (200-½)		
LNAV/VNAV DA		642-1½	629 (700-1½)		
LNAV MDA	760/24 747 (800-½)	760/40 747 (800-¾)	760-1¾	747 (800-1¾)	
C CIRCLING	760-1 747 (800-1)	960-1¼ 947 (1000-1¼)	1560-3 1547 (1600-3)	NA	

SW-2, 17 AUG 2017 to 14 SEP 2017

SW-2, 17 AUG 2017 to 14 SEP 2017