

VORTAC SAF <b>110.6</b> Chan 43	APP CRS <b>332°</b>	Rwy Idg TDZE Apt Elev <b>6316</b> <b>6304</b> <b>6348</b>
---------------------------------------	------------------------	--

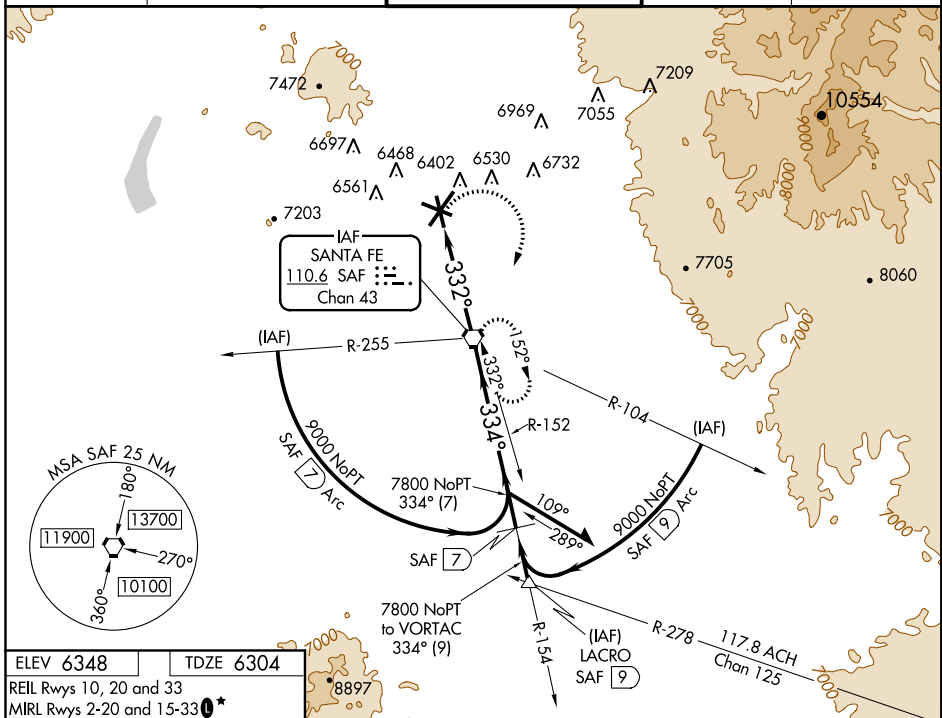
# VOR RWY 33

SANTA FE MUNI (SAF)

**⚠** When Control Tower closed, except for operators with approved weather reporting service, use Albuquerque altimeter setting.

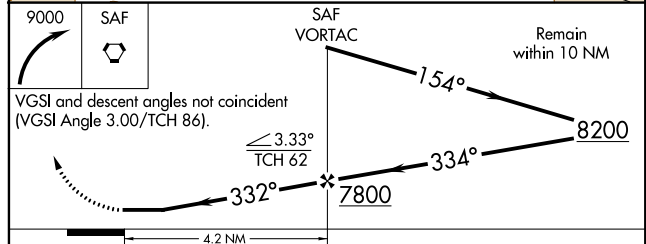
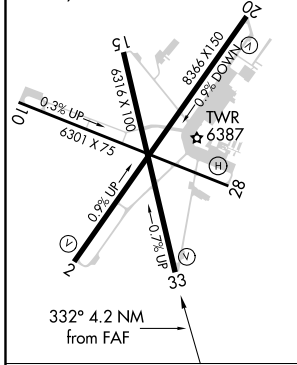
**⚠** MISSED APPROACH: Climbing right turn to 9000 direct SAF VORTAC and hold, continue climb-in-hold to 9000.

ATIS <b>128.55</b>	ALBUQUERQUE CENTER <b>132.8 346.35</b>	SANTA FE TOWER* <b>119.5 (CTAF) 239.3</b>	GND CON <b>121.7</b>	UNICOM <b>122.95</b>
-----------------------	---	--	-------------------------	-------------------------



ELEV 6348 TDZE 6304

REIL Rwy 10, 20 and 33  
MIRL Rwy 2-20 and 15-33\*  
MIRL Rwy 10-28



CATEGORY	A	B	C	D
S-33	6720-1	416 (400-1)	6720-1½	416 (400-1½)
CIRCLING	6840-1 492 (500-1)	6860-1 512 (600-1)	6860-1½ 512 (600-1½)	7020-2½ 672 (700-2½)
ALBUQUERQUE ALTIMETER SETTING MINIMUMS				
S-33	7620-1½ 1316 (1300-1½)	7620-1½ 1316 (1300-1½)	7620-3	1316 (1300-3)
CIRCLING	NA			

FAF to MAP 4.2 NM					
Knots	60	90	120	150	180
Min:Sec	4:12	2:48	2:06	1:41	1:24

SW-1, 14 SEP 2017 to 12 OCT 2017

SW-1, 14 SEP 2017 to 12 OCT 2017