

VORTAC PSI 111.0 Chan 47	APP CRS 119°	Rwy Idg 6520 TDZE 980 Apt Elev 980
----------------------------------------------	------------------------	---------------------------------------------------------------

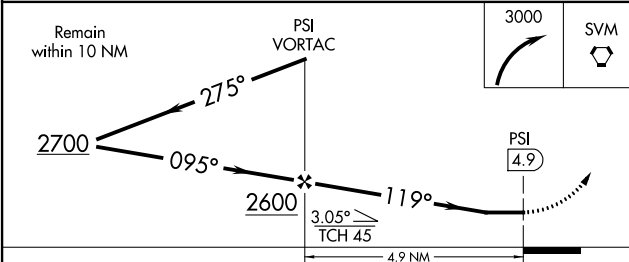
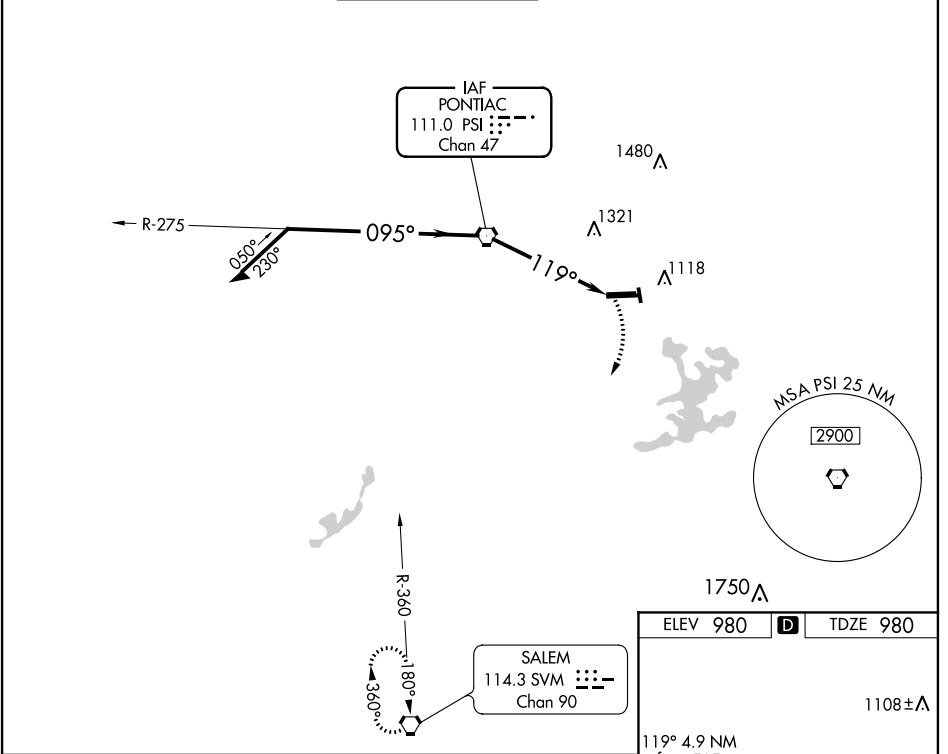
VOR RWY 9R
OAKLAND COUNTY INTL (PTK)

⚠ Inoperative table does not apply. Visibility reduction by helicopters NA.
⚠ When local altimeter setting not received, use Coleman A Young Muni altimeter setting and increase all MDA 120 feet, increase S-9R Cat C/D and Circling Cat C visibility 1/4 mile and Circling Cat D visibility 1/2 mile. Inoperative table does not apply, when using Coleman A Young Muni altimeter setting.



MISSED APPROACH:
Climbing right turn to 3000 direct SVM VORTAC and hold.

ATIS 125.025	DETROIT APP CON 127.5 363.2	PONTIAC TOWER * 120.5 (CTAF) 0	GND CON 121.9	CLNC DEL 118.25	UNICOM 122.95
------------------------	---------------------------------------	------------------------------------------	-------------------------	---------------------------	-------------------------



ELEV 980	D	TDZE 980
----------	----------	----------

1108±A

119° 4.9 NM from FAF

HIRL Rwy 9R-27L **0**
 MIRL Rwy 9L-27R **0**
 REIL Rwys 9L and 27R **0**
 REIL Rwy 27L **0**

FAF to MAP 4.9 NM

Knots	60	90	120	150	180
Min:Sec	4:54	3:16	2:27	1:58	1:38

EC-1, 22 JUN 2017 to 20 JUL 2017

EC-1, 22 JUN 2017 to 20 JUL 2017