


WAAS Ch 40012 W16A	APP CRS 165°	Rwy Idg TDZE Apt Elev	10518 100 100
--	------------------------	-----------------------------	--

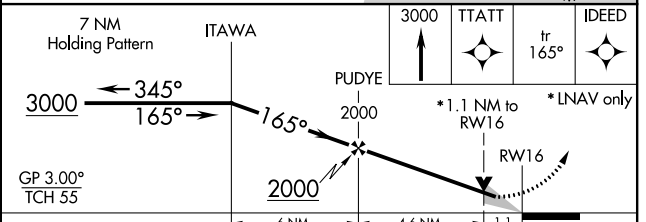
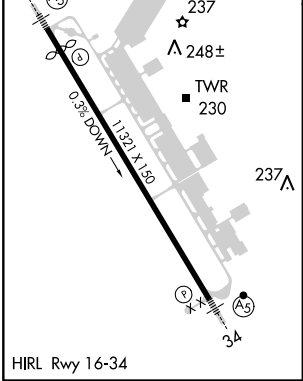
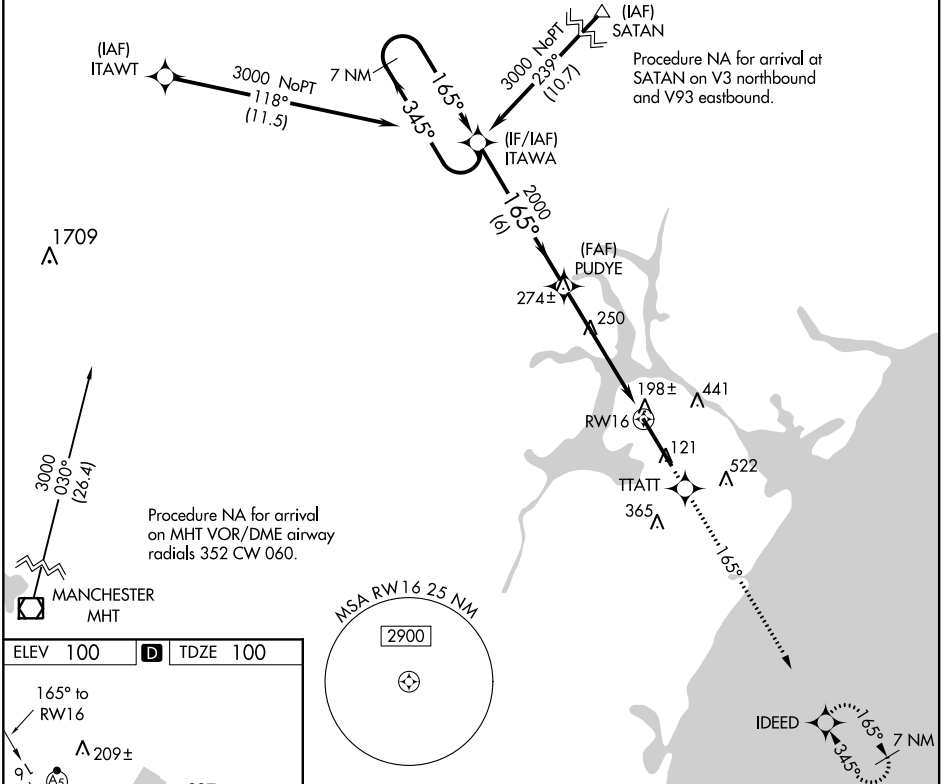
RNAV (GPS) RWY 16

PORTSMOUTH INTL AT PEASE (PSM)

▲ Circling NA East of Rwy 16-34. For uncompensated Baro-VNAV systems, LNAV/VNAV NA below -15°C (5°F) or above 49°C (120°F). DME/DME RNP-0.3 NA. For inoperative MALSR, increase LPV Cat E visibility to RVR 4000, LNAV/VNAV Cat E visibility to RVR ASR 6000, LNAV Cat D visibility to RVR 6000, and LNAV Cat E visibility to 1 1/2 miles. ** RVR 1800 authorized with use of FD or AP or HUD to DA.

MALSR  MISSED APPROACH: Climb to 3000 direct TTATT and on track 165° to IDEED and hold.

ATIS 132.05 273.5	BOSTON APP CON 125.05 269.4	PORTSMOUTH TOWER 128.4 269.0	GND CON 120.95 275.8	CLNC DEL 335.8	UNICOM 122.95
-----------------------------	---------------------------------------	--	--------------------------------	--------------------------	-------------------------



CATEGORY	A	B	C	D	E
LPV DA **	300/24 200 (200-1/2)				
LNAV/VNAV DA	452/40 352 (400-3/4)				
LNAV MDA	500/24 400 (400-1/2)		500/50 400 (400-1)		
CIRCLING	500-1	560-1	560-1 1/2	680-2	800-2 1/2
	400 (400-1)	460 (500-1)	460 (500-1 1/2)	580 (600-2)	700 (800-2 1/2)

NE-1, 17 AUG 2017 to 14 SEP 2017

NE-1, 17 AUG 2017 to 14 SEP 2017