

WAAS CH 40300 W33A	APP CRS 330°	Rwy Idg TDZE Apt Elev	4578 15 19
--	------------------------	-----------------------------	---------------------------------------

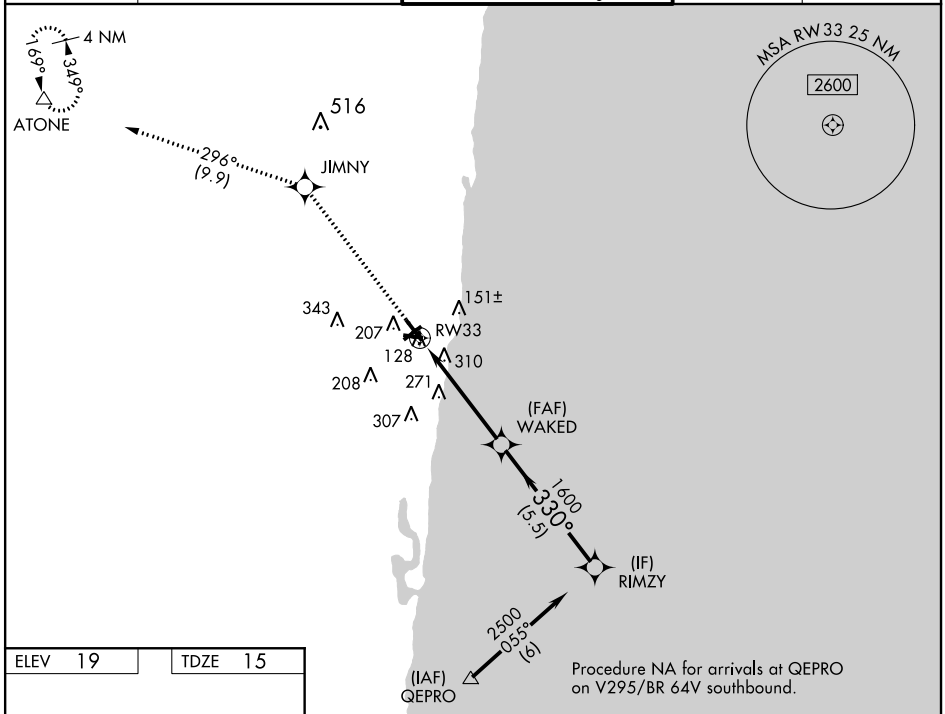
RNAV (GPS) RWY 33

POMPANO BEACH AIRPARK (PMP)

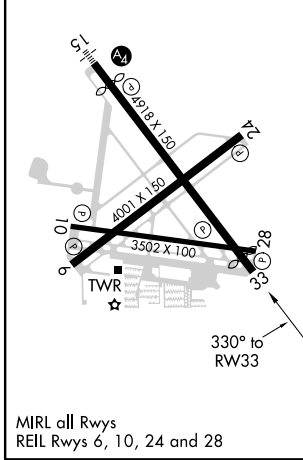
⚠ For uncompensated Baro-VNAV systems, LNAV/VNAV NA below 0°C (32°F) or above 54°C (130°F). DME/DME RNP-0.3 NA. When local altimeter setting not received, use Fort Lauderdale Executive altimeter setting. Helicopter visibility reduction below 3/4 SM NA.

MISSED APPROACH: Climb to 2000 direct JIMNY and on track 296° to ATONE and hold.

ATIS 120.55	MIAMI APP CON 119.7 306.3	POMPANO BEACH TOWER * 125.4 (CTAF) 0	GND CON 121.9	UNICOM 122.95
-----------------------	-------------------------------------	---	-------------------------	-------------------------



ELEV 19	TDZE 15
---------	---------



2000	JIMNY	tr 296°	ATONE	RIMZY
*LNAV only.				
RW33		*1.7 NM to RW33	WAKED 1600	2500
1.7 NM		3.1 NM	5.5 NM	GP 3.01° TCH 53
CATEGORY	A	B	C	D
LPV DA	265-3/4	250 (300-3/4)		NA
LNAV/VNAV DA	700-2 1/2	685 (700-2 1/2)		NA
LNAV MDA	620-1	605 (700-1)		NA
C CIRCLING	660-1	641 (700-1)		NA

SE-3, 22 JUN 2017 to 20 JUL 2017

SE-3, 22 JUN 2017 to 20 JUL 2017