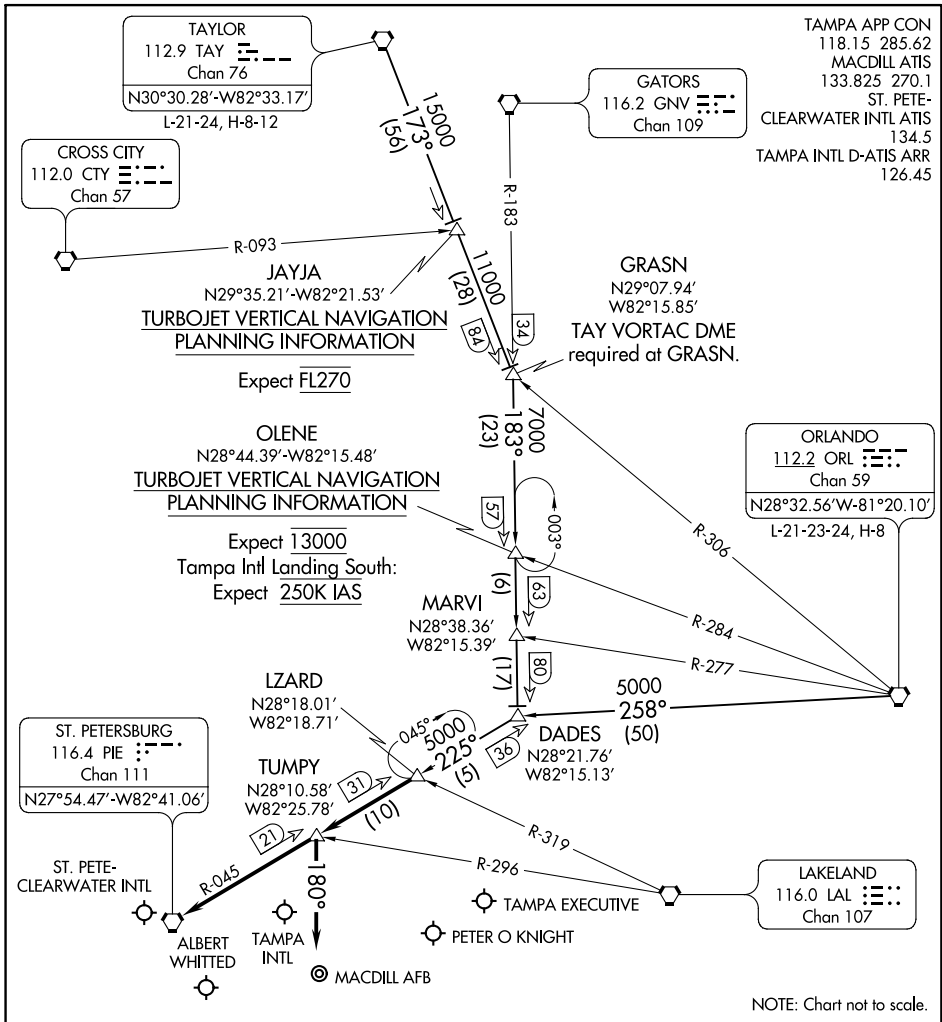


# LZARD SIX ARRIVAL

TAMPA, FLORIDA



SE-3, 09 NOV 2017 TO 07 DEC 2017

SE-3, 09 NOV 2017 TO 07 DEC 2017

**TAYLOR TRANSITION (TAY.LZARD6):** From over TAY VORTAC on TAY R-173 to GRASN INT, then on GNV R-183 to DADES INT, then on PIE R-045 to LZARD INT. Thence. . . .

**ORLANDO TRANSITION (ORL.LZARD6):** From over ORL VORTAC on ORL R-258 to DADES INT, then on PIE R-045 to LZARD INT. Thence. . . .

**TAMPA INTL:**  
 . . . RWY 1L/R: From over LZARD INT on PIE R-045 to TUMPHY INT. Depart TUMPHY INT heading 180° for RADAR vectors to final approach course.  
 . . . RWY 19L/R: From over LZARD INT on PIE R-045 to PIE VORTAC. Expect RADAR vectors to final approach after LZARD INT.

**ALL OTHER AIRPORTS:** From over LZARD INT on PIE R-045 to PIE VORTAC. Expect RADAR vectors to the airport after LZARD INT.

# LZARD SIX ARRIVAL

TAMPA, FLORIDA