

# DADES FOUR ARRIVAL (RNAV)

TAMPA, FLORIDA

- NOTE: RADAR Required.
- NOTE: RNAV 1.
- NOTE: DME/DME/IRU or GPS Required.
- NOTE: Turbojet and Turboprop aircraft only.
- NOTE: Primary landing Rwy's 1L/R, 19L/R.
- NOTE: For non-GPS equipped aircraft:  
TAY transition: ORL and OCF must be operational; ORL transition: ORL and LAL must be operational.

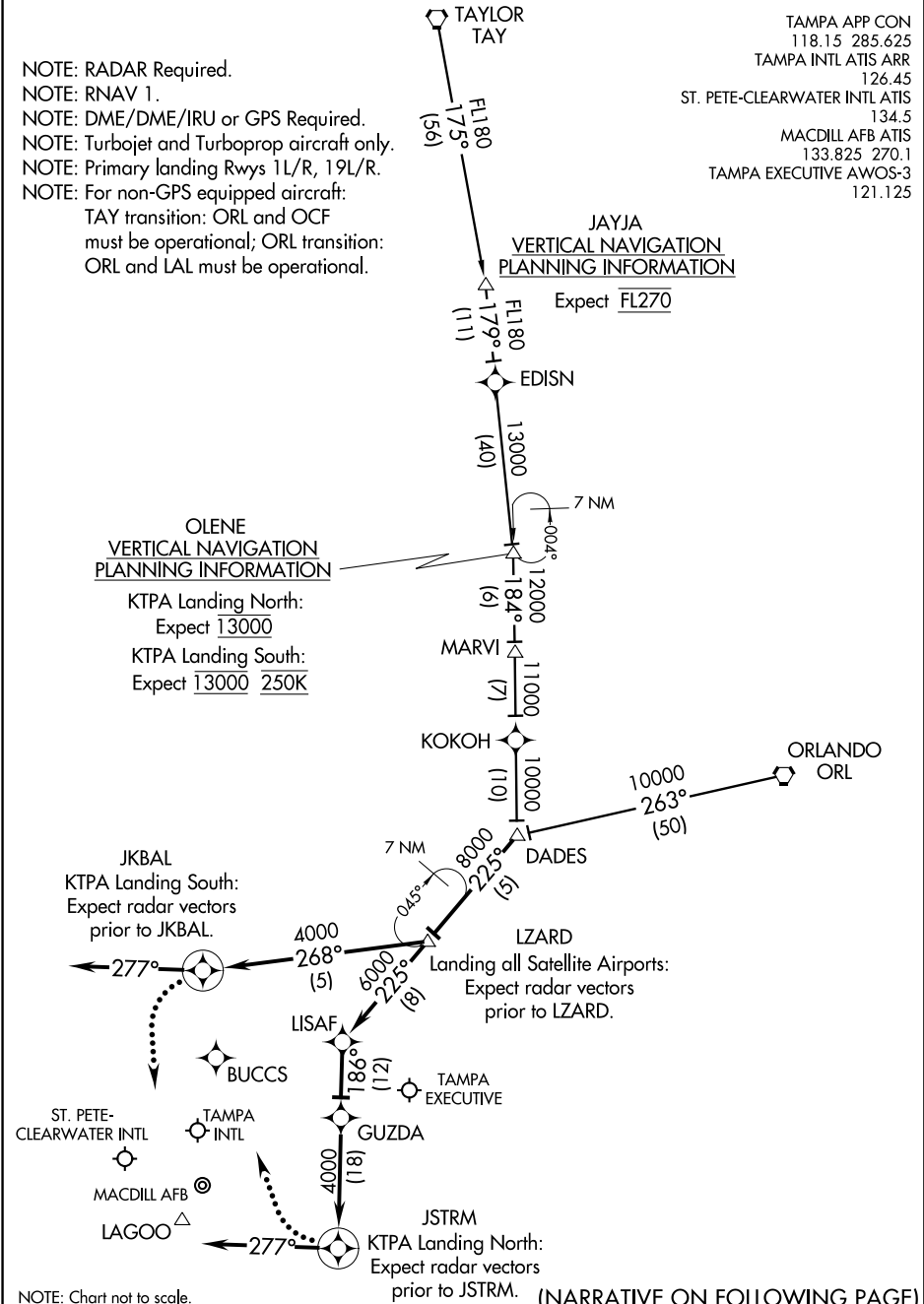
- TAMPA APP CON 118.15 285.625
- TAMPA INTL ATIS ARR 126.45
- ST. PETE-CLEARWATER INTL ATIS 134.5
- MACDILL AFB ATIS 133.825 270.1
- TAMPA EXECUTIVE AWOS-3 121.125

JAYJA  
VERTICAL NAVIGATION  
PLANNING INFORMATION  
Expect FL270

OLENE  
VERTICAL NAVIGATION  
PLANNING INFORMATION

KTPA Landing North:  
Expect 13000

KTPA Landing South:  
Expect 13000 250K



NOTE: Chart not to scale.

(NARRATIVE ON FOLLOWING PAGE)

# DADES FOUR ARRIVAL (RNAV)

TAMPA, FLORIDA

ARRIVAL DESCRIPTION

ORLANDO TRANSITION (ORL.DADES4):

TAYLOR TRANSITION (TAY.DADES4):

From DADES on track 225° to LZARD, thence via assigned runway transition.

KTPA Landing North Rwy 1L/R: From over LZARD on track 225° to LISAF, then on track 186° to GUZDA, then on track 186° to JSTRM, then right turn on heading 277°. Expect radar vectors.

KTPA Landing South 19 L/R: From over LZARD on track 268° to JKBAL, then on heading 277°. Expect radar vectors.

KTPA Landing North: From over LZARD on track 225° to LISAF, then on track 186° to GUZDA, then on track 186° to JSTRM, then right turn on heading 277°. Expect radar vectors.

LOST COMMUNICATIONS:

KTPA Landing South: Continue track to JKBAL, then turn left to intercept the Rwy 19L final approach course, conduct approach.

KTPA Landing North: Continue track to JSTRM, then turn right to intercept the Rwy 1L final approach course, conduct approach.

SE-3, 27 APR 2017 to 25 MAY 2017

SE-3, 27 APR 2017 to 25 MAY 2017