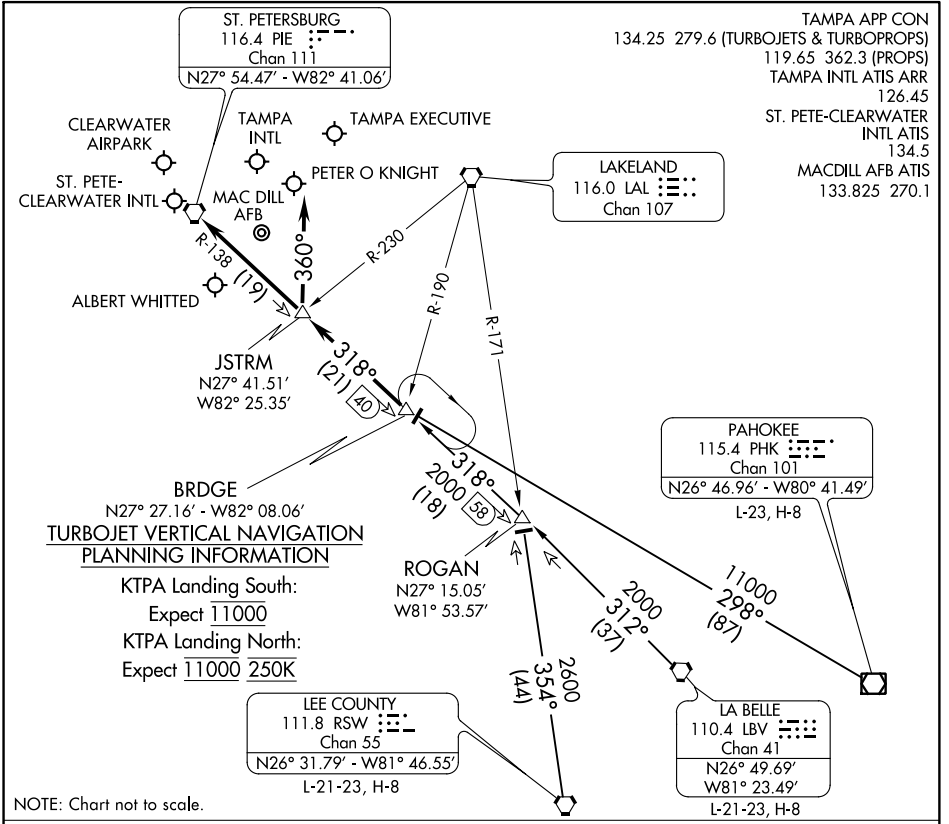


BRDGE EIGHT ARRIVAL



**TURBOJET VERTICAL NAVIGATION
PLANNING INFORMATION**

KTPA Landing South:
Expect 11000

KTPA Landing North:
Expect 11000 250K

ARRIVAL ROUTE DESCRIPTION

- LA BELLE TRANSITION (LBV.BRDGE8): From over LBV VORTAC on LBV R-312 & PIE R-138 to BRDGE INT. Thence. . .
- LEE COUNTY TRANSITION (RSW.BRDGE8): From over RSW VORTAC on RSW R-354 to ROGAN INT, then on PIE R-138 to BRDGE INT. Thence. . .
- PAHOKEE TRANSITION (PHK.BRDGE8): From over PHK VOR/DME on PHK R-298 to BRDGE INT. Thence. . .
- KTPA:
 . . . RWY 19L/R: From over BRDGE INT on PIE R-138 to JSTRM INT. Depart JSTRM INT heading 360° for vector to final approach course.
 . . . RWY 01L/R: From over BRDGE INT on PIE R-138 to PIE VORTAC. Expect RADAR vector to final approach course after BRDGE INT.
- KPIE, KCLW, KTPF, KSPG, KMCF, KVDF:
 . . . From over BRDGE INT on PIE R-138 to PIE VORTAC. Expect RADAR vector to final approach course/airport after BRDGE INT.
- LOST COMMUNICATIONS: STANDARD.

SE-3, 27 APR 2017 to 25 MAY 2017

SE-3, 27 APR 2017 to 25 MAY 2017