

VORTAC PIE	APP CRS	Rwy Idg	9180
116.4	172°	THRE	7
Chan 111		Apt Elev	11

VOR/DME RWY 18L

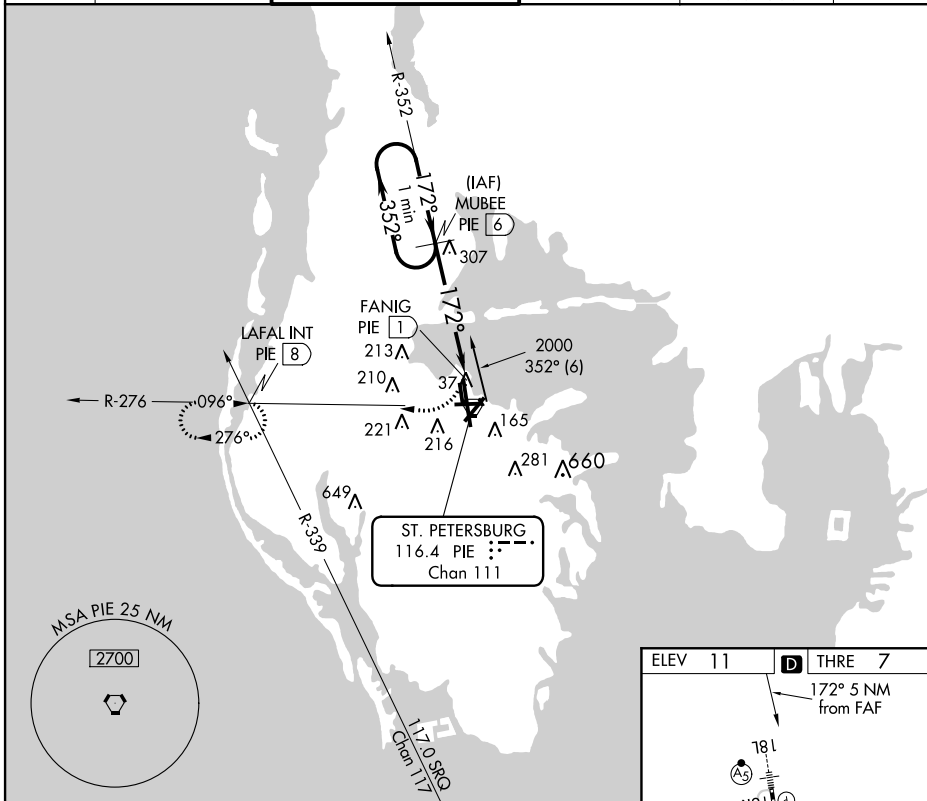
ST. PETE-CLEARWATER INTL (PIE)

⚠ VDP NA with Tampa Intl altimeter setting. When local altimeter setting not received, use Tampa Intl altimeter setting and increase all MDA 40 feet, and increase S-18L Cat C and D visibility to 1¼ mile and Circling Cat C to 1½ mile. For inop MALS R when using Tampa Intl altimeter setting, increase S-18L Cat C and D visibility to 1½.



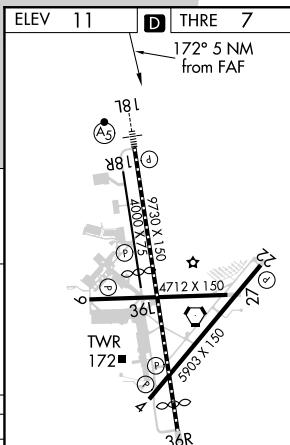
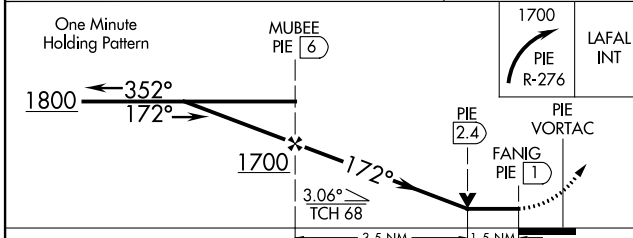
MISSED APPROACH: Climbing right turn to 1700 on PIE VORTAC R-276 to LAFAL INT/PIE 8 DME and hold.

ATIS	TAMPA APP CON	ST. PETERSBURG TOWER*	GND CON	CLNC DEL	UNICOM
134.5	125.3 316.05	118.3 (CTAF) 0 257.8	121.9 348.6	120.6 350.2	122.95



SE-3, 08 JAN 2015 to 05 FEB 2015

SE-3, 08 JAN 2015 to 05 FEB 2015



CATEGORY	A	B	C	D
S-18L	540/24	533 (600-½)	540/55	533 (600-¼)
CIRCLING	540-1	529 (600-1)	540-1½	580-2
			529 (600-½)	569 (600-2)

TDZ/CL Rwy 18L
REIL Rwys 4, 9, 22, and 27
MIRL Rwys 4-22 and 9-27
HIRL Rwy 18L-36R