

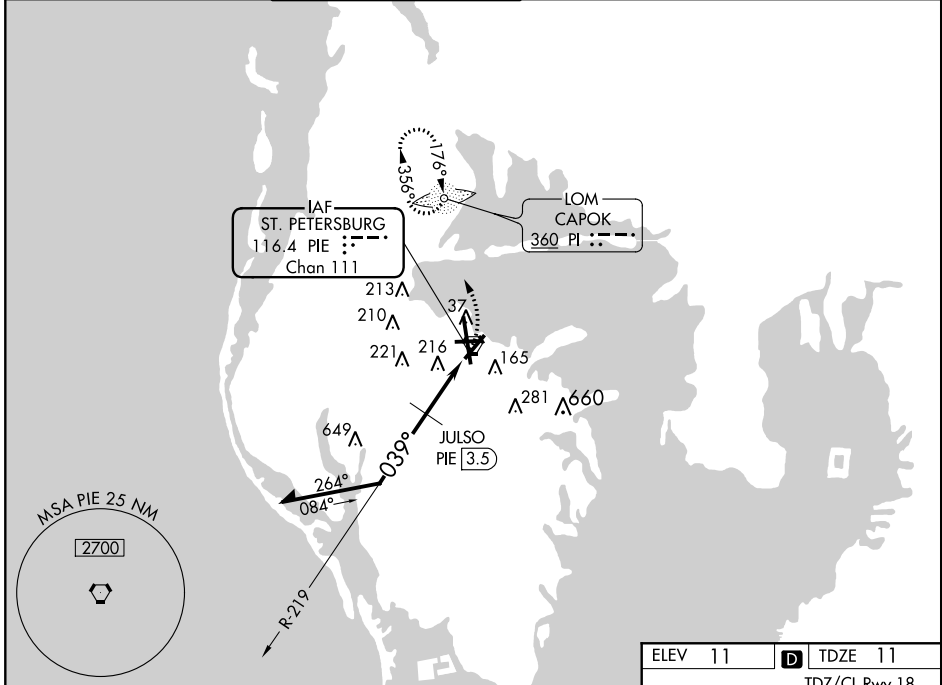
VORTAC PIE	APP CRS	Rwy Idg	<b>5903</b>
<b>116.4</b>	<b>039°</b>	TDZE	<b>11</b>
Chan <b>111</b>		Apt Elev	<b>11</b>

**VOR RWY 4**  
ST PETE-CLEARWATER INTL (PIE)

**⚠** When local altimeter setting not received, use Tampa Intl altimeter setting and increase all MDAs 40 feet. ADF Required. Helicopter visibility reduction below  $\frac{3}{4}$  SM NA.

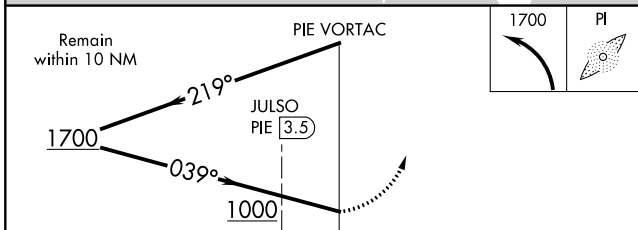
MISSED APPROACH: Climbing left turn to 1700 direct CAPOK LOM and hold.

ATIS <b>134.5</b>	TAMPA APP CON <b>125.3 316.05</b>	ST. PETERSBURG TOWER* <b>118.3 (CTAF) 0 257.8</b>	GND CON <b>121.9 348.6</b>	CLNC DEL <b>120.6 350.2</b>	UNICOM <b>122.95</b>
----------------------	--------------------------------------	--	-------------------------------	--------------------------------	-------------------------



SE-3, 27 APR 2017 to 25 MAY 2017

SE-3, 27 APR 2017 to 25 MAY 2017



CATEGORY	A	B	C	D
S-4	1000-1 $\frac{1}{4}$ 989 (1000-1 $\frac{1}{4}$ )	1000-1 $\frac{1}{2}$ 989 (1000-1 $\frac{1}{2}$ )	1000-3	989 (1000-3)
CIRCLING	1000-1 $\frac{1}{4}$ 989 (1000-1 $\frac{1}{4}$ )	1000-1 $\frac{1}{2}$ 989 (1000-1 $\frac{1}{2}$ )	1000-3	989 (1000-3)
JULSO FIX MINIMUMS				
S-4	480-1	469 (500-1)	480-1 $\frac{3}{8}$	469 (500-1 $\frac{3}{8}$ )
CIRCLING	520-1	509 (600-1)	520-1 $\frac{1}{2}$ 509 (600-1 $\frac{1}{2}$ )	580-2 569 (600-2)

