


WAAS CH 50126 W18A	APP CRS 176°	Rwy Idg THRE 7 Apt Elev 11	9180
--	------------------------	--	-------------

RNAV (GPS) RWY 18L

ST. PETE-CLEARWATER INTL (PIE)

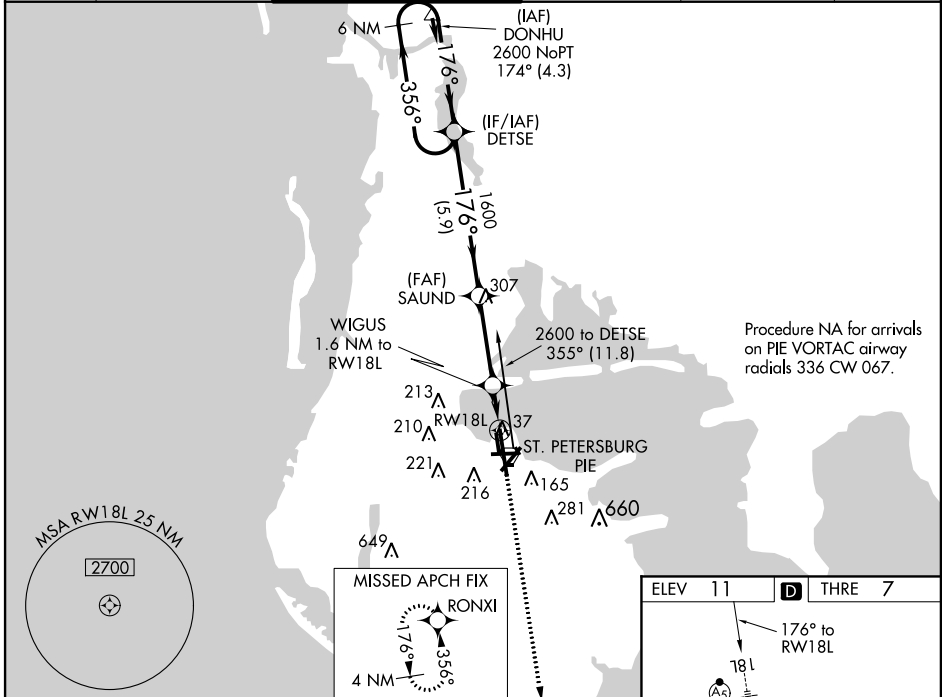
⚠ For uncompensated Baro-VNAV systems, LNAV/VNAV NA below -15°C (5° F) or above 43°C (109°F). DME/DME RNP-0.3 NA. VDP and Baro-VNAV NA when using Tampa Intl altimeter setting. When local altimeter setting not received, use Tampa Intl altimeter setting and increase LPV DA to 231 feet, LNAV/VNAV DA to 281, increase all MDA 40 feet and LNAV Cat C and D visibility to RVR 2600. For inop MALSR, increase LNAV/VNAV visibility to RVR 4000 all Cats. When using Tampa Intl altimeter setting, increase LNAV/VNAV visibility to RVR 4500 all Cats.

MALSR



MISSED APPROACH: Climb to 2600 direct RONXI and hold.

ATIS 134.5	TAMPA APP CON 125.3 316.05	ST. PETERSBURG TOWER* 118.3 (CTAF) 0 257.8	GND CON 121.9 348.6	CLNC DEL 120.6 350.2	UNICOM 122.95
----------------------	--------------------------------------	--	-------------------------------	--------------------------------	-------------------------



SE-3, 08 JAN 2015 to 05 FEB 2015

SE-3, 08 JAN 2015 to 05 FEB 2015

