

NORTH BAY VISUAL RWY 18L

AL-625 (FAA)

ST. PETE-CLEARWATER INTL (PIE)
ST. PETERSBURG-CLEARWATER, FLORIDA

ATIS
134.5
TAMPA APP CON
125.3 316.05
ST. PETERSBURG TOWER ★
118.3 (CTAF) 257.8
GND CON
121.9 348.6
CLNC DEL
120.6 350.2
UNICOM
122.95

LAKE TARPON

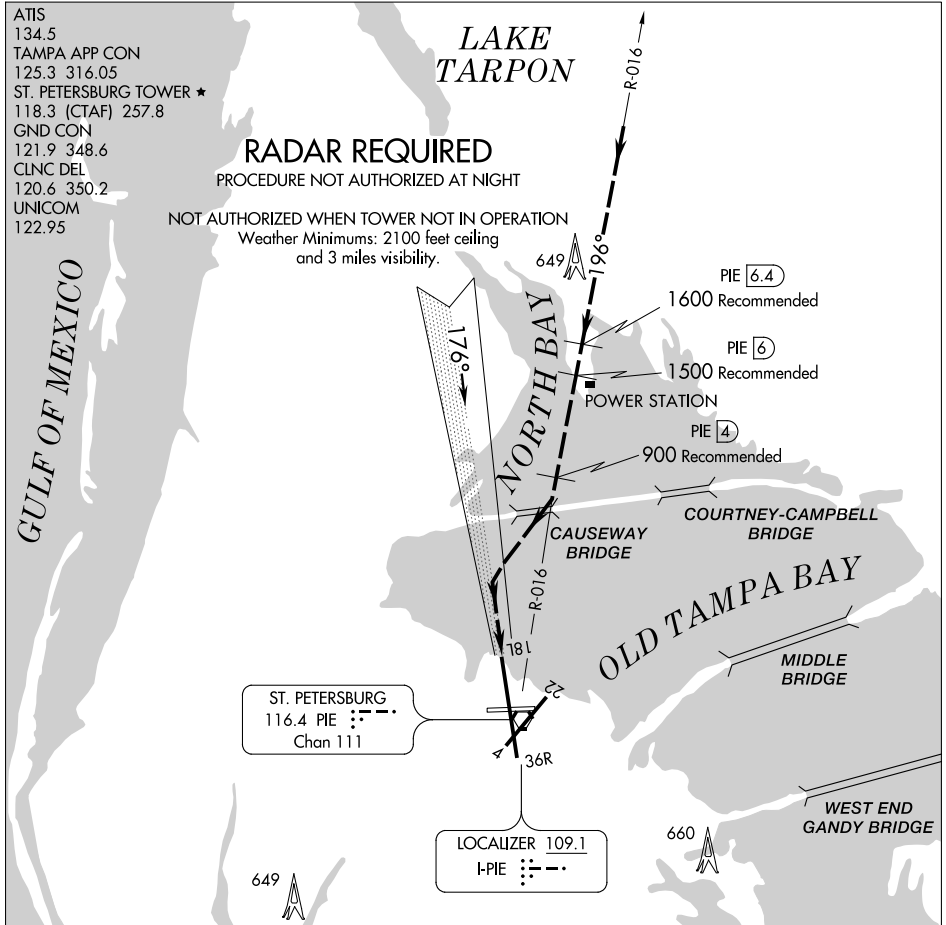
RADAR REQUIRED

PROCEDURE NOT AUTHORIZED AT NIGHT

NOT AUTHORIZED WHEN TOWER NOT IN OPERATION

Weather Minimums: 2100 feet ceiling
and 3 miles visibility.

GULF OF MEXICO



ST. PETERSBURG
116.4 PIE : - - -
Chan 111

LOCALIZER 109.1
I-PIE : - - -

1	2	3	4	5	6	7	8	9	10	11	12	13	14	15	16
---	---	---	---	---	---	---	---	---	----	----	----	----	----	----	----



NORTH BAY VISUAL APPROACH

When cleared for a NORTH BAY VISUAL APPROACH, aircraft will proceed visually from over the power station (PIE R-016 6 DME) heading 196° direct to the Causeway Bridge, then turn right to intercept the final approach course to Rwy 18L.

NORTH BAY VISUAL RWY 18L

ST. PETERSBURG-CLEARWATER, FLORIDA
ST. PETE-CLEARWATER INTL (PIE)

Amdt 5 03APR14

27°55'N-82°41'W

SE-3, 17 AUG 2017 to 14 SEP 2017

SE-3, 17 AUG 2017 to 14 SEP 2017