
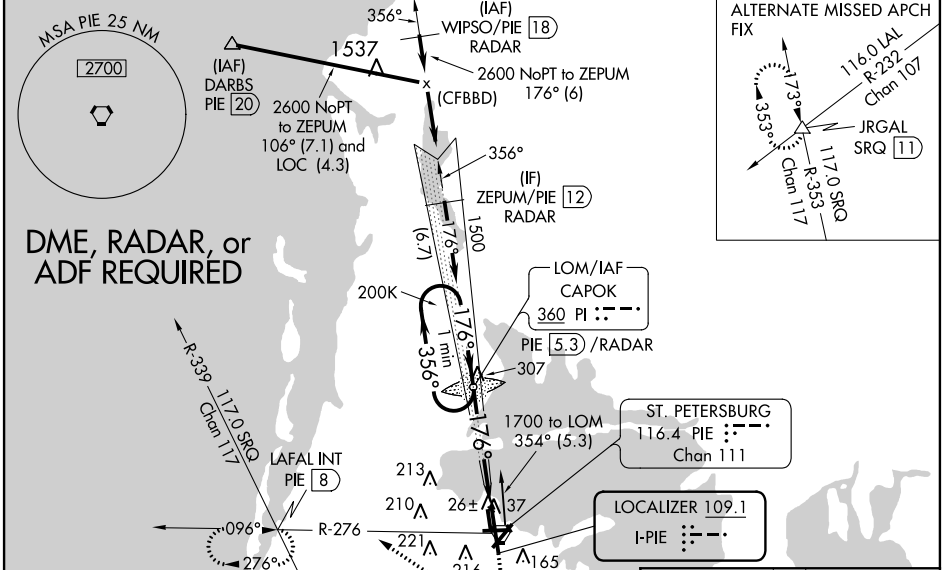


LOC I-PIE 109.1	APP CRS 176°	Rwy Idg THRE Apt Elev 9180 7 11
---------------------------	------------------------	---

ILS RWY 18L (SA CAT I)
ST. PETE-CLEARWATER INTL (PIE)

<p>⚠ Requires specific OPSPEC, MSPEC, or LOA approval and use of HUD to DH. SA CAT I S-ILS R18L NA when control tower closed. SA CAT I S-ILS R18L NA when using Tampa Intl altimeter setting. DME from PIE VORTAC. DME, RADAR, or ADF required.</p>	<p>MALSR</p>  <p>MISSED APPROACH: Climb to 500 then climbing right turn to 1700 on PIE VORTAC R-276 to LAFAL INT/PIE 8 DME and hold.</p>
--	---

ATIS 134.5	TAMPA APP CON 125.3 316.05	ST. PETERSBURG TOWER* 118.3 (CTAF) 0 257.8	GND CON 121.9 348.6	CLNC DEL 120.6 350.2	UNICOM 122.95
----------------------	--------------------------------------	---	-------------------------------	--------------------------------	-------------------------

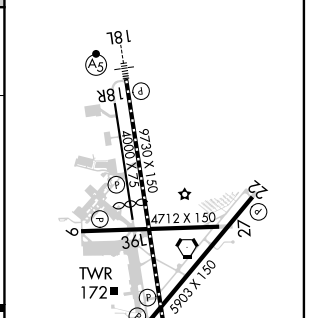
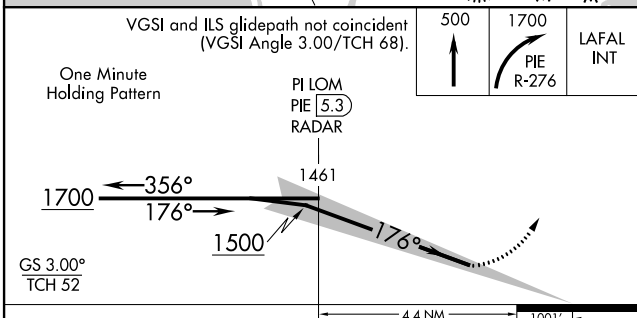


DME, RADAR, or ADF REQUIRED

SE-3, 08 JAN 2015 to 05 FEB 2015

SE-3, 08 JAN 2015 to 05 FEB 2015

ELEV 11	D THRE 7
---------	-----------------



CATEGORY	A	B	C	D
S-ILS 18L	RA 157/14 150 DA 157			

SA CATEGORY I ILS - SPECIAL AIRCREW & AIRCRAFT CERTIFICATION REQUIRED

TDZ/CL Rwy 18L
REIL Rwys 4, 9, 22, and 27
MIRL Rwys 4-22 and 9-27

HIRL Rwy 18L-36R