

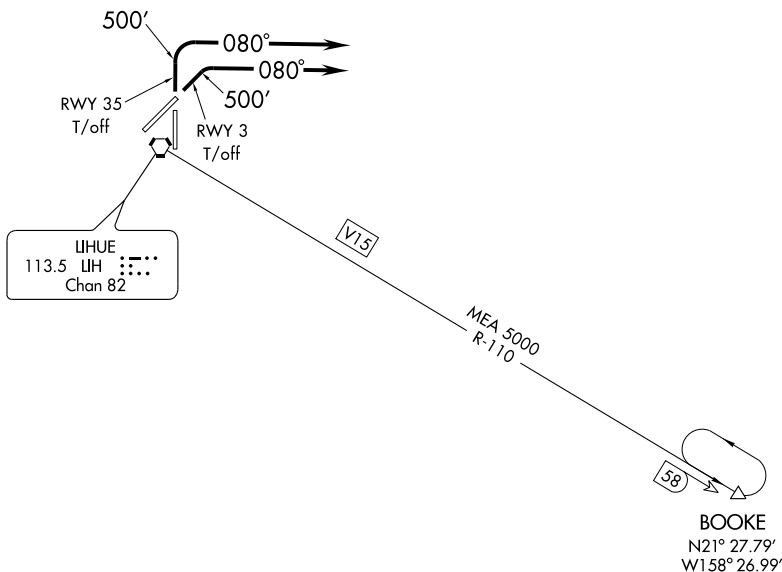
(LIH5.BOOKE) 07130

SL-776 (FAA)

LIHUE (LIH)(PHLI)
LIHUE, HAWAII

LIHUE FIVE DEPARTURE

ATIS
127.2
GND CON
121.9
LIHUE TOWER★
118.9 (CTAF) 263.1
HCF APPROACH
126.5 269.4



LIHUE
113.5 LIH
Chan 82

NOTE: DME Required.

NOTE: Honolulu CERAP radio call is "Honolulu Center".

NOTE: Chart not to scale.



DEPARTURE ROUTE DESCRIPTION

TAKE-OFF RUNWAYS 3 and 35: Climb runway heading to 500, then climbing right turn to heading 080°, expect radar vectors to intercept LIH R-110 to BOOKE DME fix. MEA 5000.

LOST COMMUNICATIONS: If not in contact with Honolulu CERAP one minute after departure, maintain SID heading until 10 NM east of LIH VORTAC, then intercept LIH R-110 to BOOKE DME fix. MEA 5000.

LIHUE FIVE DEPARTURE
(LIH5.BOOKE) 07130

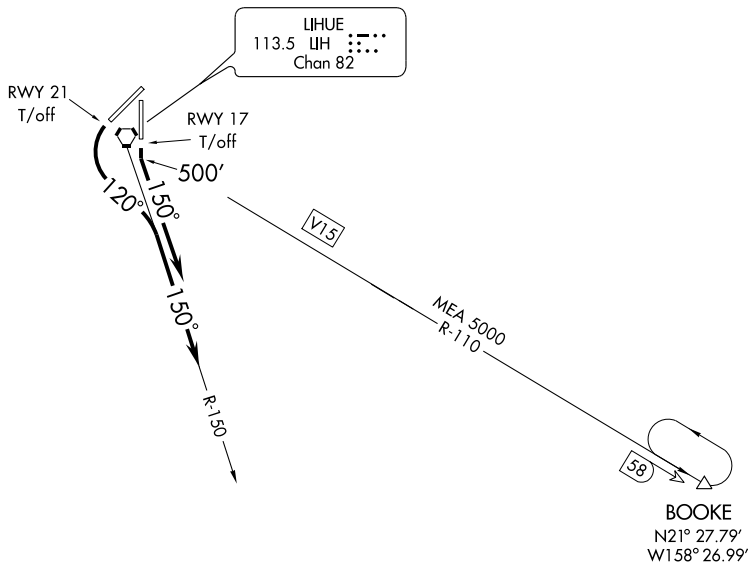
LIHUE, HAWAII
LIHUE (LIH)(PHLI)

PAC, 22 OCT 2009 to 17 DEC 2009

PAC, 22 OCT 2009 to 17 DEC 2009

RICHE TWO DEPARTURE

ATIS
127.2
GND CON
121.9
LIHUE TOWER★
118.9 (CTAF) 263.1
HCF APPROACH
126.5 269.4



LIHUE
113.5 LIH :...:
Chan 82

PAC, 22 OCT 2009 to 17 DEC 2009

PAC, 22 OCT 2009 to 17 DEC 2009

- NOTE: DME Required.
- NOTE: Honolulu CERAP radio call is "Honolulu Center".
- NOTE: Terrain heights to 2297' occur within 4.5 NM southwest of the airport.
- NOTE: Chart not to scale.

DEPARTURE ROUTE DESCRIPTION

TAKE-OFF RUNWAY 17: Climb runway heading to 500 feet, then climbing left turn to heading 150°, expect radar vectors to intercept LIH R-110 to BOOKE DME fix. MEA 5000.

TAKE-OFF RUNWAY 21: Immediate climbing left turn to heading 120 until crossing LIH R-150, thence fly heading 150°, expect radar vectors to intercept LIH R-110 to BOOKE DME fix. MEA 5000.

LOST COMMUNICATIONS: If not in contact with Honolulu CERAP one minute after departure, maintain SID heading until 10 NM southeast of LIH VORTAC, then intercept LIH R-110 to BOOKE DME fix. MEA 5000.