

LOC/DME I-GLC	APP CRS	Rwy ldg	10506
109.3	265°	TDZE	10
Chan 30		Apt Elev	36

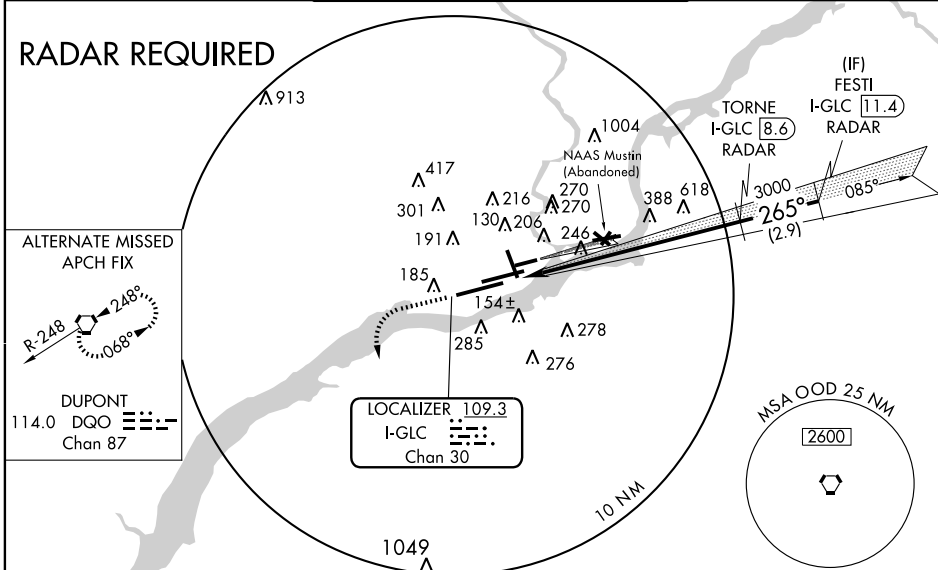
Simultaneous Close Parallel approaches authorized with ILS PRM Rwy 26. Procedure not authorized when glideslope not available. Dual VHF Comm Required. See additional requirements on PRM Information page.



MISSED APPROACH: Climb to 1500, then climbing left turn to 3000 direct OOD VORTAC and hold.

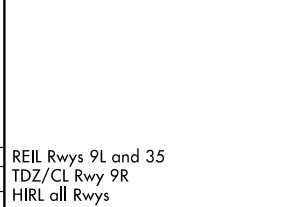
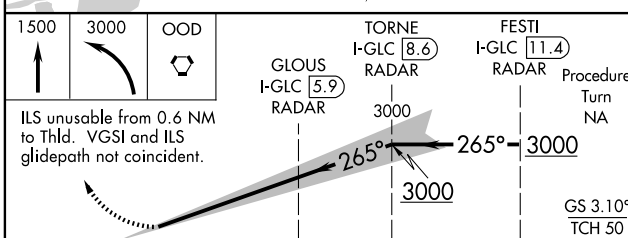
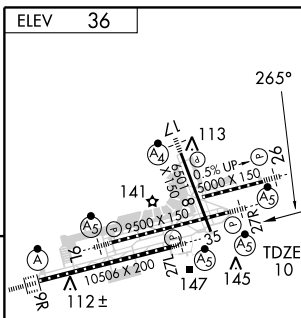
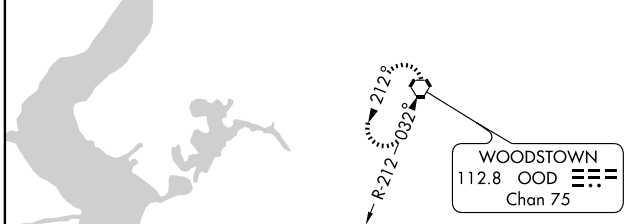
ATIS	PHILADELPHIA APP CON	PHILADELPHIA TOWER	GND CON	CLNC DEL
ARR 133.4	124.35 319.15	118.5 327.05 (Rwys 9L/27R, 8/26 and 17/35)	121.9 348.6	118.85 348.6
DEP 135.925		135.1 327.05 (Rwy 9R/27L)		
		PRM 120,425		

RADAR REQUIRED



NE-4, 19 NOV 2009 to 17 DEC 2009

NE-4, 19 NOV 2009 to 17 DEC 2009



CATEGORY	A	B	C	D
S-ILS 27L		257/24	247 (300-1/2)	

REIL Rwys 9L and 35
TDZ/CL Rwy 9R
HIRL all Rwys