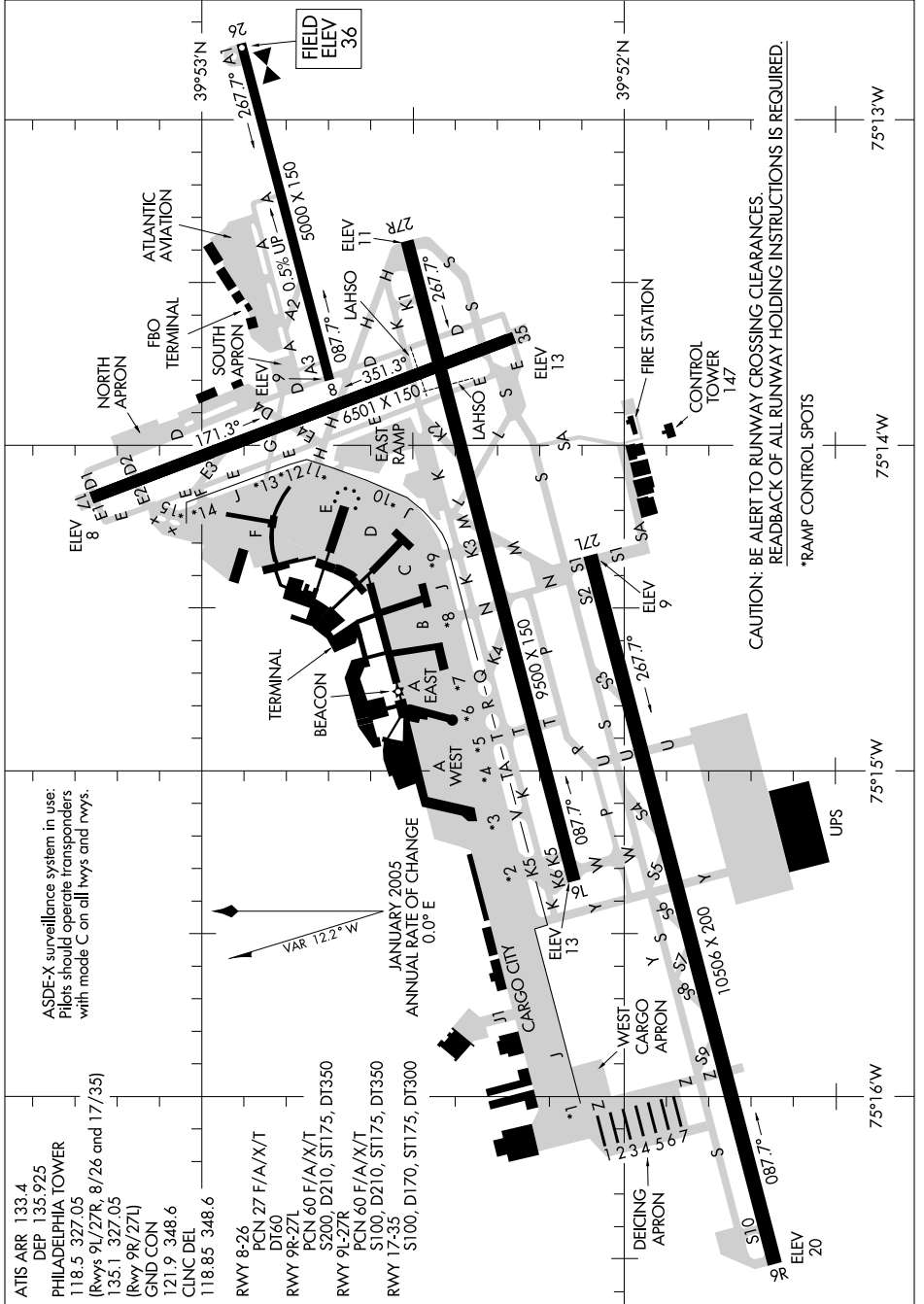


AIRPORT DIAGRAM

AL-320 (FAA)

PHILADELPHIA INTL (PHL)
PHILADELPHIA, PENNSYLVANIA

NE-4, 22 OCT 2009 to 19 NOV 2009



ASDE-X surveillance system in use:
Pilots should operate transponders
with mode C on all twys and rwy's.

VAR 12.2° W
JANUARY 2005
ANNUAL RATE OF CHANGE
0.0° E

CAUTION: BE ALERT TO RUNWAY CROSSING CLEARANCES.
READBACK OF ALL RUNWAY HOLDING INSTRUCTIONS IS REQUIRED.
*RAMP CONTROL SPOTS

AIRPORT DIAGRAM

PHILADELPHIA, PENNSYLVANIA
PHILADELPHIA INTL (PHL)

NE-4, 22 OCT 2009 to 19 NOV 2009