

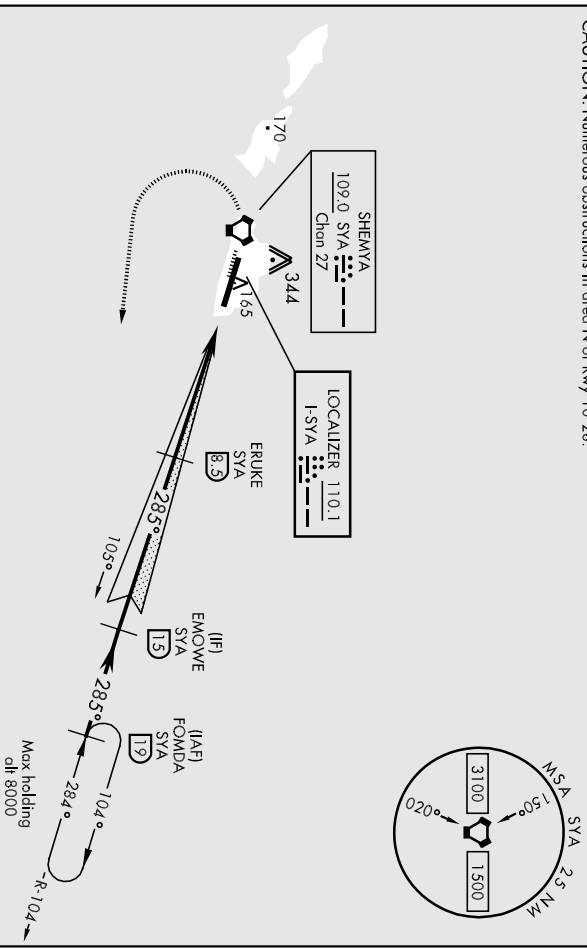
IIS or LOC/DME RWY 28

AL-1246 [USAF]

EARECKSON AS (PASV)

LOC I-SYA 110.1	APCH CRS 285°	Rwy Idg 10,004	THRE 83	ASOS 135.65
	Appt Elev 98			
		SALS A2		MISSED APPROACH: Climb to 500, then climbing left turn to 3000, Intercept SYA R-104 direct FOWMDA and hold.
ANCHORAGE CENTER 119.1 339.8		CTAF 127.2 352.05 0		

CAUTION: Numerous obstructions in area N of Rwy 10-28.

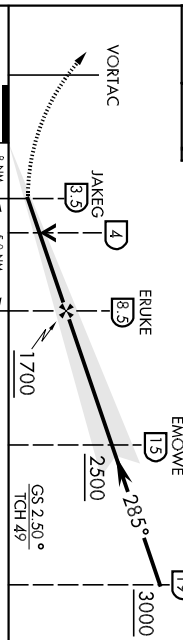


AK, 17 AUG 2017 to 12 OCT 2017

AK, 17 AUG 2017 to 12 OCT 2017

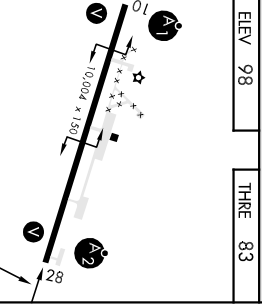
EMERG SAFE ALT 100 NM 5200

500	3000	ELEV 98	THRE 83
-----	------	---------	---------



CATEGORY	A	B	C	D	E
SALS 28**	283-1/2 200 (200-1/2)				
SACOC 28***	480-3/4 397 (400-3/4)	480-7/8 397 (400-7/8)			

CIRCLING***	382 (400-1)	462 (500-1)	462 (500-1 1/2)	560-1 1/2	660-2
				562 (600-2)	



SHEMYA I., ALEUTIAN I., ALASKA
 52°43'N-174°07'E
 EARECKSON AS (PASV)
 Amhd 4 27JUN13
IIS or LOC/DME RWY 28

VOR/DME or TACAN RWY 10

VORAC SYA 109.0 Chn 27	APCH CRS 092°	Rwy Idg 10,004	THRE 98	Appt Elev 98
------------------------------	------------------	-------------------	------------	-----------------

AL-1246 [USAF]

EARECKSON AS (PASY)

** When AIS Inop, increase vis to 1½ miles.
** Circling Not Authorized in area N of Rwy 10-28.

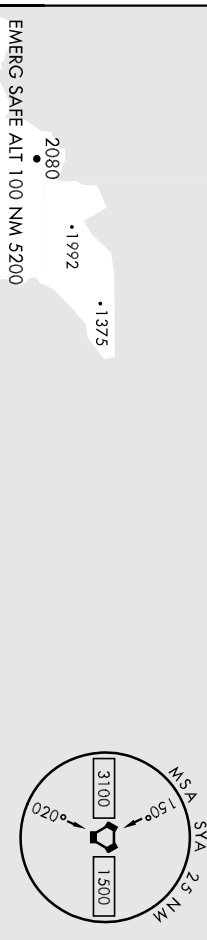
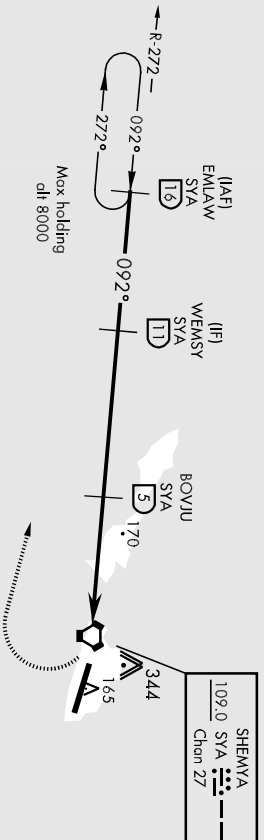


MISSED APPROACH: Climb to 1200', then climbing right turn to 4000, Intercept SYA R-272 direct EMLAW and hold.

ANCHORAGE CENTER 119.1 339.8	CTAF 127.2 352.050
---------------------------------	-----------------------

ASOS 135.65

CAUTION: Numerous obstructions in area N of Rwy 10-28.



EMLAW (16)	WEMSY (11)	BOYJU (5)	EIVEK (67)	VORTAC	1200	4000	EMLAW (16)	ELEV 98	THRE 98
4000	092°	2500	1800						
				4.9 NM					
				1.2 NM					
CATEGORY	A	B	C	D	E				
S-10 *	580-1 482 (500-1)								
CIRCLING **	580-1½ 482 (500-1½)		660-2 562 (600-2)						
SHEMYA I., ALEUTIAN I., ALASKA				52°43'N-174°07'E		EARECKSON AS (PASY)			
HIRL Rwy 10-28				SYA VORTAC		092° to			
SHEMYA I., ALEUTIAN I., ALASKA				52°43'N-174°07'E		VOR/DME or TACAN RWY 10			

SHEMYA I., ALEUTIAN I., ALASKA

VOR/DME or TACAN RWY 28

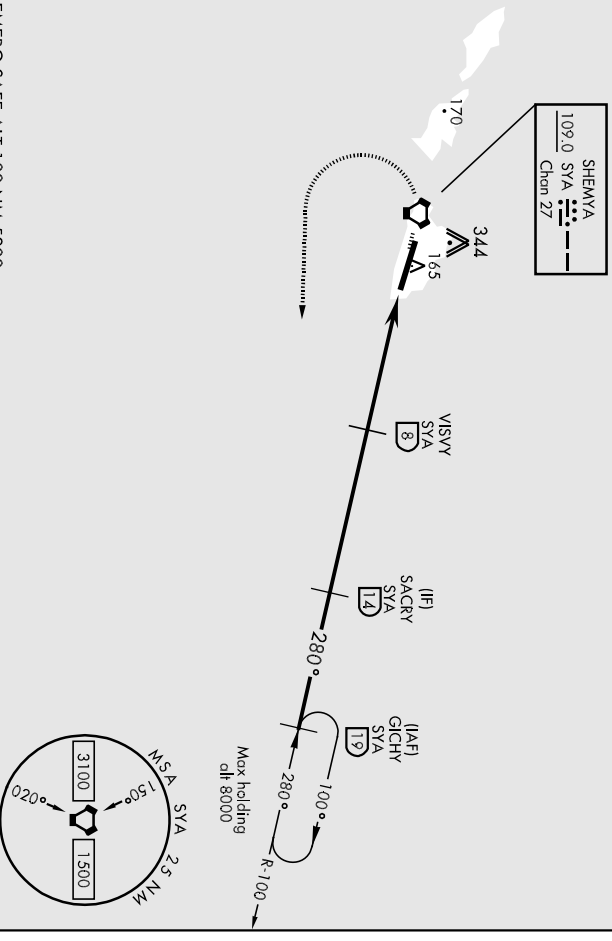
13178

AL-1246 (USAF)

EARECKSON AS (PASY)

VORTAC SYA 109.0 Chan 27	APCH CRS 280°	Rwy Idg 10,004	THRE Elev 83	SALS A2	MISSED APPROACH: Climbing left turn to 3000, intercept SYA R-100 direct GICHY and hold.	ASOS 135.65
* When A/S Inop, increase CAT AB vis to 1 mile, CAT CDE vis to 1 1/2 miles ** Circling Not Authorized in area N of Rwy 10-28.		ANCHORAGE CENTER 119.1 339.8		CTAF 127.2 352.05 0		

CAUTION: Numerous obstructions in area N of Rwy 10-28.

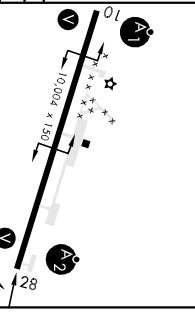
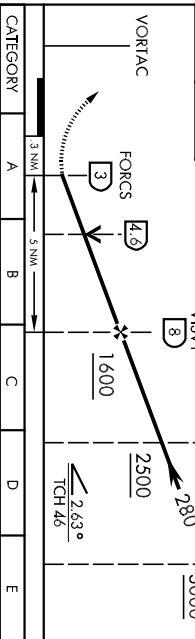


AK, 17 AUG 2017 to 12 OCT 2017

AK, 17 AUG 2017 to 12 OCT 2017

EMERG SAFE ALT 100 NM 5200

3000 GICHY R-100 19						ELEV 98	THRE 83
-------------------------------------	--	--	--	--	--	---------	---------



VORTAC						ELEV 98	THRE 83
CATEGORY	A	B	C	D	E		
S-28 *	620-3/4 537 (600-3/4)	620-1 1/2 537 (600-1 1/4)	620-1 1/2 537 (600-1 1/4)	660-2 562 (600-2)	660-2 562 (600-2)		
CIRCLING **	620-1 522 (600-1)	620-1 1/2 522 (600-1 1/2)	620-1 1/2 522 (600-1 1/2)	660-2 562 (600-2)	660-2 562 (600-2)		

SHEMYA I., ALEUTIAN I., ALASKA
Ampl 4 27JUN13

52°43'N-174°07'E

EARECKSON AS (PASY)
VOR/DME or TACAN RWY 28