

13178

# AIRPORT DIAGRAM

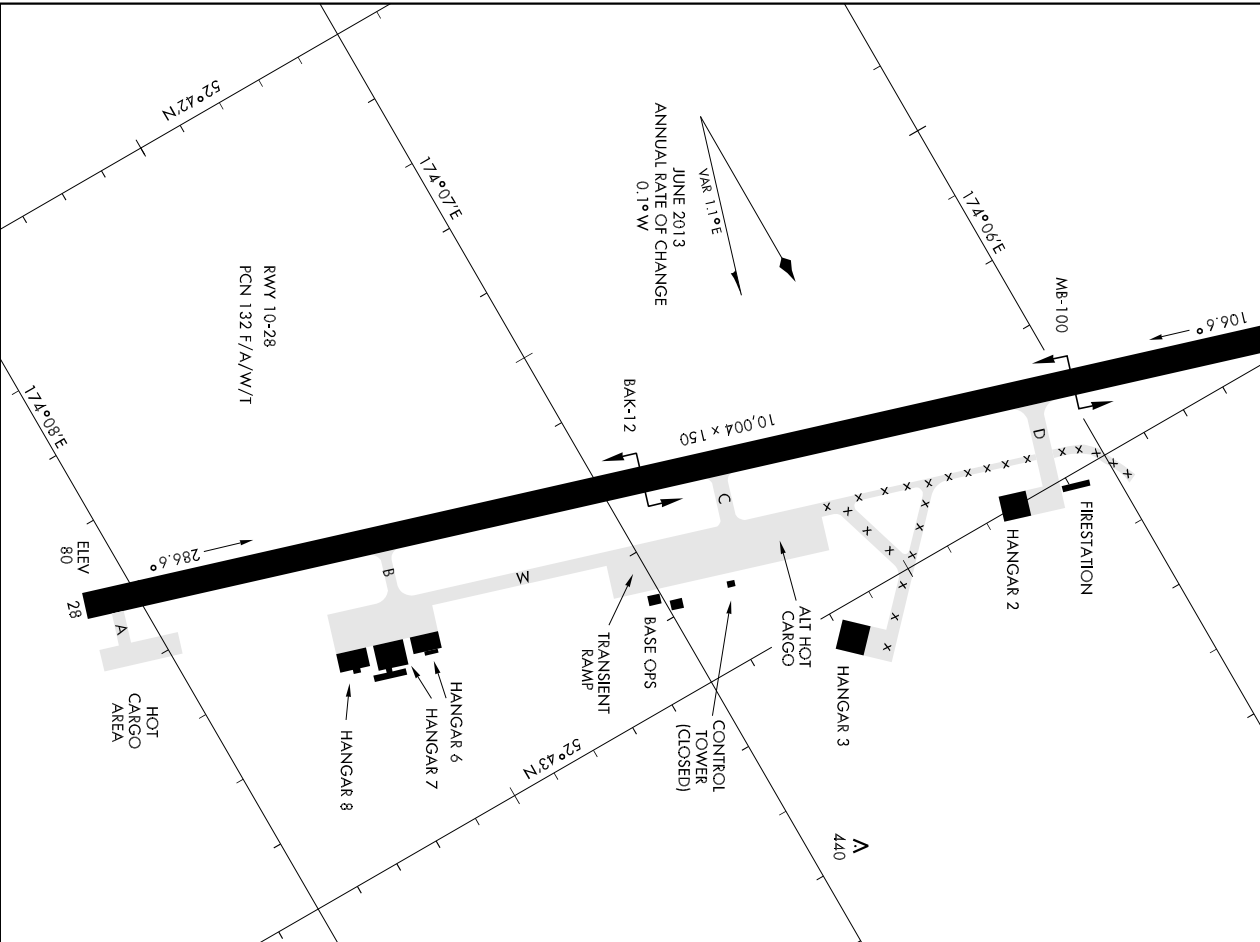
AFD-1246 [USAF]

EARECKSON AS (PASY)

SHEMYA ISLAND, ALASKA

CTAF  
127.2 352.05

FIELD  
ELEV  
98



AK, 12 OCT 2017 to 07 DEC 2017

AK, 12 OCT 2017 to 07 DEC 2017

# AIRPORT DIAGRAM

SHEMYA ISLAND, ALASKA  
EARECKSON AS (PASY)

SHEMYA I., ALEUTIAN I., ALASKA

# VOR/DME or TACAN RWY 28

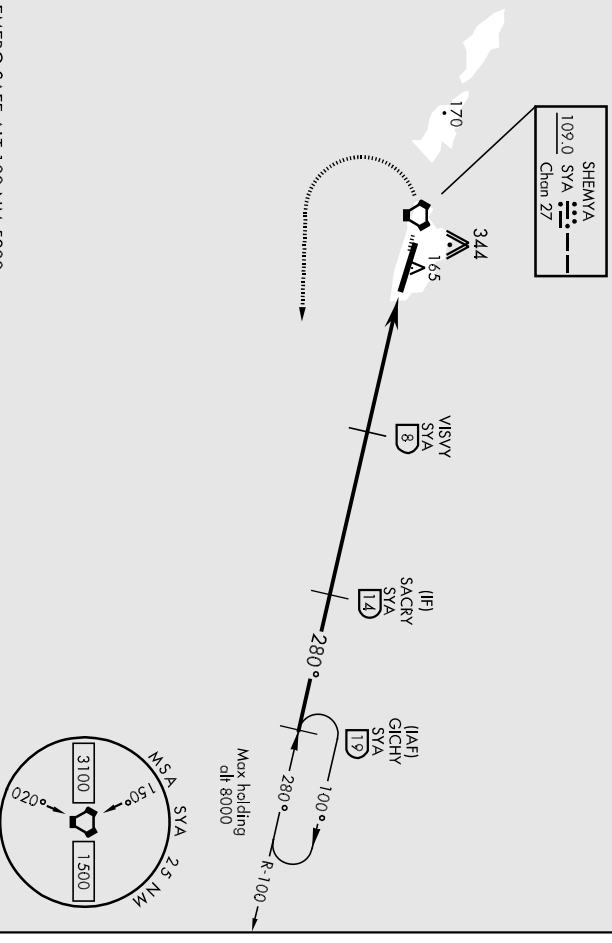
13178

AL-1246 (USAF)

EARECKSON AS (PASY)

VORTAC SYA <b>109.0</b> Chan 27	APCH CRS <b>280°</b>	Rwy Idg <b>10,004</b>	THRE Elev <b>83</b>	SALS <b>A2</b>	MISSED APPROACH: Climbing left turn to 3000, intercept SYA R-100 direct GICHY and hold.
* When A/S Inop, increase CAT AB vis to 1 mile, CAT CDE vis to 1 1/2 miles		** Circling Not Authorized in area N of Rwy 10-28.			
ANCHORAGE CENTER <b>119.1 339.8</b>		CTAF <b>127.2 352.05 0</b>		ASOS <b>135.65</b>	

CAUTION: Numerous obstructions in area N of Rwy 10-28.

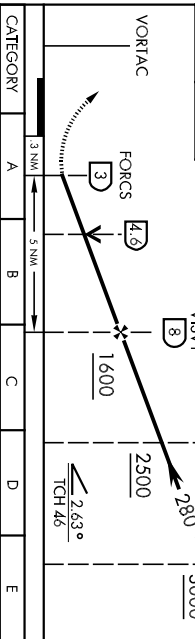


AK, 12 OCT 2017 to 07 DEC 2017

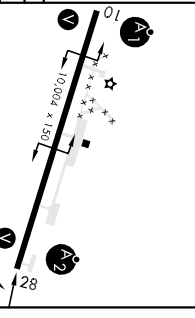
AK, 12 OCT 2017 to 07 DEC 2017

EMERG SAFE ALT 100 NM 5200

3000 GICHY R-100 <b>19</b>						ELEV 98	THRE 83
-------------------------------------	--	--	--	--	--	---------	---------



VORTAC							
CATEGORY	A	B	C	D	E		
S-28 *	620-3/4 537 (600-3/4)	620-1 1/2 537 (600-1 1/4)	620-1 1/2 537 (600-1 1/2)	660-2 562 (600-2)	660-2 562 (600-2)		
CIRCLING **	620-1 522 (600-1)	620-1 1/2 522 (600-1 1/2)	620-1 1/2 522 (600-1 1/2)	660-2 562 (600-2)	660-2 562 (600-2)		



HIRL Rwy 10-28 REL Rwy 10-28	280° to SYA VORTAC
---------------------------------	-----------------------

SHEMYA I., ALEUTIAN I., ALASKA  
Ampl 4 27JUN13

52°43'N-174°07'E

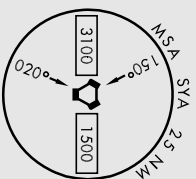
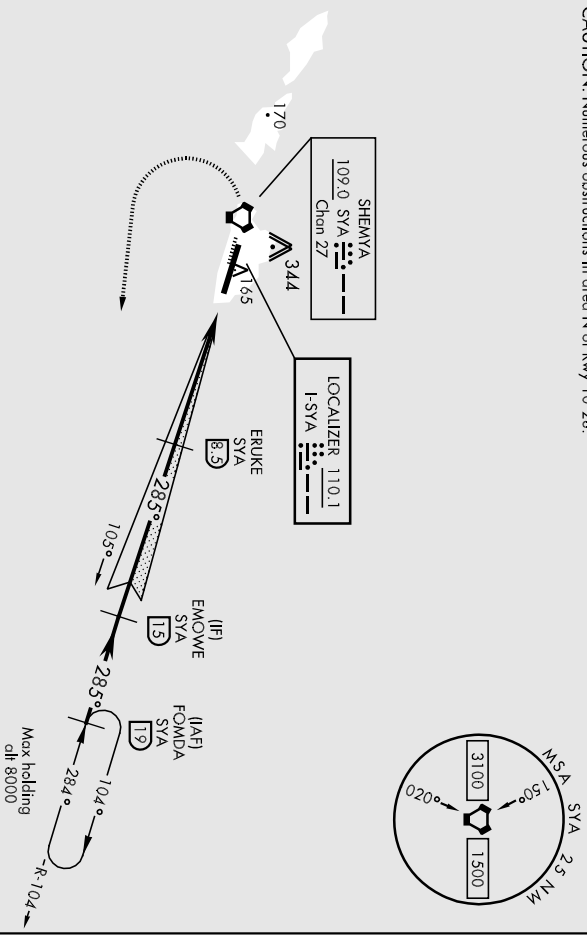
EARECKSON AS (PASY)  
VOR/DME or TACAN RWY 28

# ILS or LOC/DME RWY 28

EARECKSON AS (PASY)

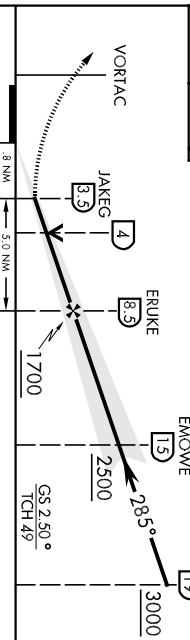
LOC I-SYA <b>110.1</b>	APCH CRS <b>285°</b>	Rwy Idg <b>10,004</b>	AL-1246 [USAF]	SALS <b>A2</b>	MISSED APPROACH: Climb to 500, then climbing left turn to 3000, Intercept SYA R-104 direct FOWMDA and hold.
	THRE Appt Elev	<b>83</b>			
		<b>98</b>			
ANCHORAGE CENTER <b>119.1 339.8</b>			CTAF <b>127.2 352.05 0</b>		ASOS <b>135.65</b>

CAUTION: Numerous obstructions in area N of Rwy 10-28.



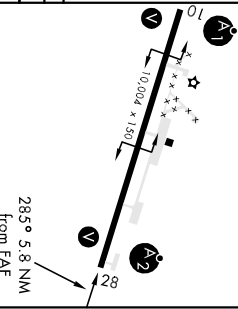
EMERG SAFE ALT 100 NM 5200

500	3000	ELEV	98	THRE	83
-----	------	------	----	------	----



CATEGORY	A	B	C	D	E
SALS 28**	283-1/2 200 (200-1/2)				
SACOC 28***	480-3/4 397 (400-3/4)	480-7/8 397 (400-7/8)			

CIRCLING***	382 (400-1)	462 (500-1)	462 (500-1/2)	562 (600-2)
480-1	560-1	560-1 1/2	660-2	



SHEMYA I., ALEUTIAN I., ALASKA

13178

# VOR/DME or TACAN RWY 10

AL-1246 [USAF]

EARECKSON AS (PASY)

VORTAC SYA 109.0 Chan 27	APCH CRS 092°	Rwy Idg 10,004	THRE 98	Appt Elev 98
--------------------------------	------------------	-------------------	------------	-----------------

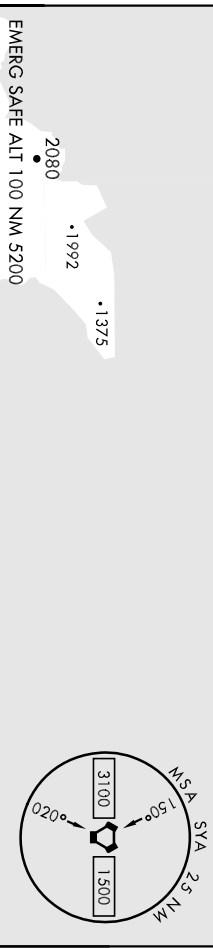
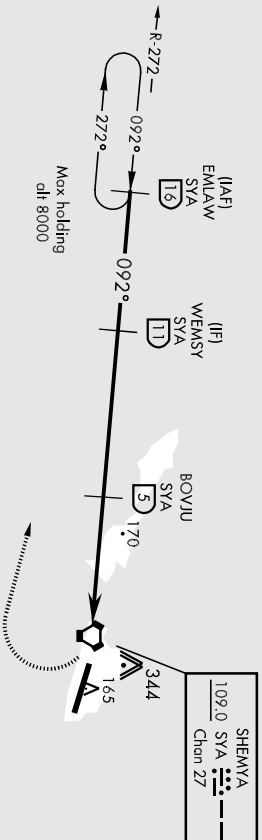
\*\* When ALS Inop, increase vis to 1½ miles.  
\*\* Circling Not Authorized in area N of Rwy 10-28.



MISSED APPROACH: Climb to 1200', then climbing right turn to 4000', Intercept SYA R-272 direct EMLAW and hold.

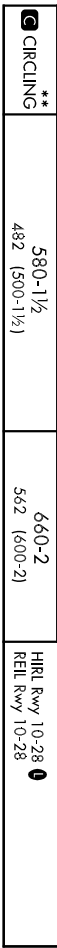
ANCHORAGE CENTER 119.1 339.8	CTAF 127.2 352.05 0	ASOS 135.65
---------------------------------	------------------------	----------------

CAUTION: Numerous obstructions in area N of Rwy 10-28.



EMLAW (16)	WEMSY (11)	BOYJU (5)	EIVEK (0.1)	VORTAC
4000	2500	1800		
EMERG SAFE ALT 100 NM 5200				
ELEV 98				
THRE 98				

CATEGORY	A	B	C	D	E
S-10 *	580-1 482 (500-1)				
CIRCLING **	580-1½		660-2		
	482 (500-1½)		562 (600-2)		



SHEMYA I., ALEUTIAN I., ALASKA  
Ampl 4 27JUN13  
52°43'N-174°07'E  
EARECKSON AS (PASY)  
VOR/DME or TACAN RWY 10