

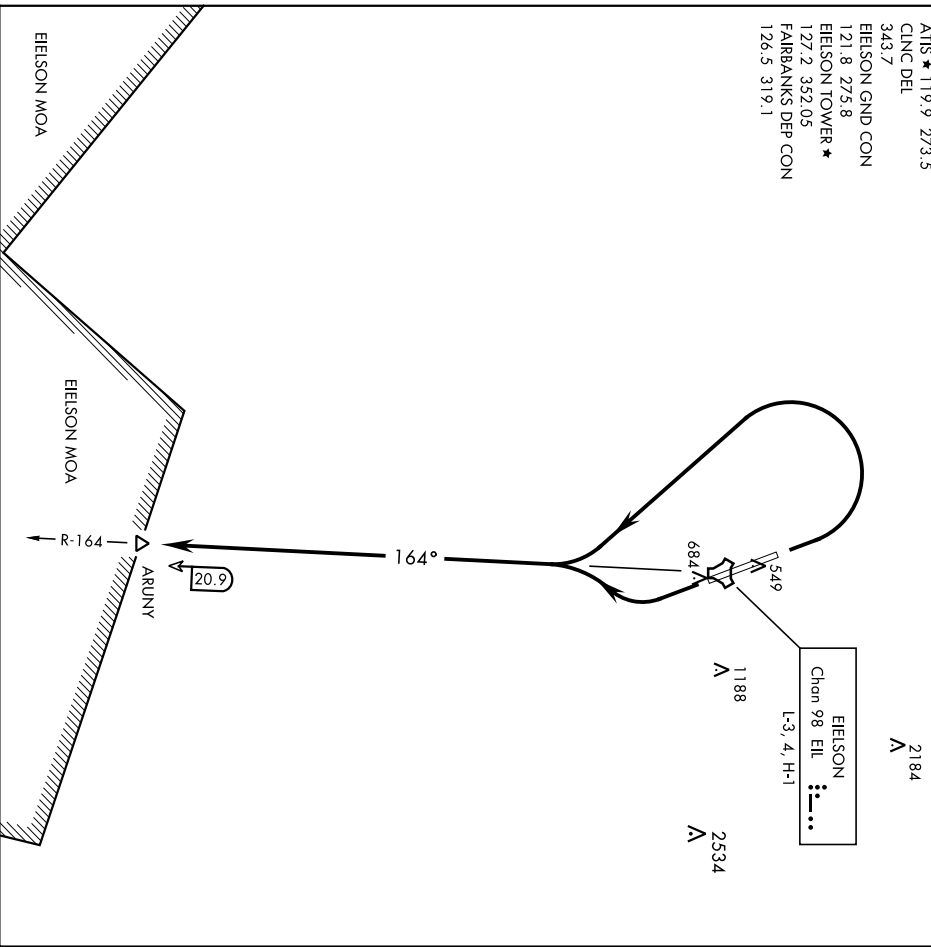
ARUNY TWO DEPARTURE

SI-1729 [USAF]

EIELSON AFB (PAEI)

FAIRBANKS, ALASKA

ATIS ★ 119.9 273.5
 CINCL DEL
 343.7
 EIELSON GND CON
 121.8 275.8
 EIELSON TOWER ★
 127.2 352.05
 FAIRBANKS DEP CON
 126.5 319.1



DEPARTURE ROUTE DESCRIPTION

TAKE-OFF RWY 14 (ARUNY2-ARUNY): Turn right to intercept EIL TACAN R-164 to ARUNY.
 Maintain assigned altitude.

TAKE-OFF RWY 32 (ARUNY2-ARUNY): Turn left to intercept EIL TACAN R-164 to ARUNY.
 Maintain assigned altitude.

ARUNY TWO DEPARTURE

FAIRBANKS, ALASKA
 EIELSON AFB (PAEI)

17061

COSOL TWO DEPARTURE (RNAV)

SL-1729 [USAF]

EIELSON AFB (PAEI)
FAIRBANKS, ALASKA

ATIS ★
 119.9 273.5
 EIELSON GND CON
 121.8 275.8
 EIELSON TOWER ★
 127.2 352.05
 FAIRBANKS DEP CON
 126.5 319.1
 CINC DEL
 343.7

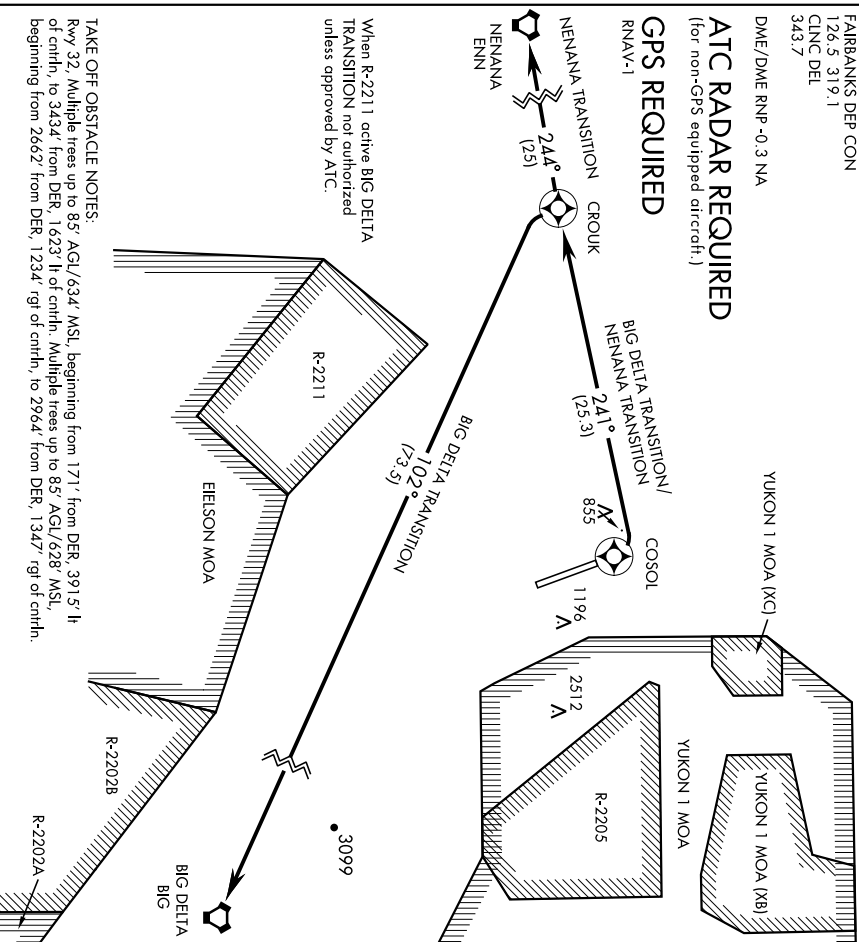
DME/DME RNP -0.3 NA

ATC RADAR REQUIRED

(for non-GPS equipped aircraft.)

GPS REQUIRED

RNAV-1



When R-2211 active BIG DELTA TRANSITION not authorized unless approved by ATC.

TAKE OFF OBSTACLE NOTES:

Rwy 32, Multiple trees up to 85' AGL/634' MSL, beginning from 171' from DER, 391.5 ft of crlnh, to 3434' from DER, 1.623' ft of crlnh. Multiple trees up to 85' AGL/628' MSL, beginning from 2662' from DER, 1234' rgt of crlnh, to 2964' from DER, 1347' rgt of crlnh.

DEPARTURE ROUTE DESCRIPTION

▼ TAKE-OFF RWY 32 (COSOL2-COSOL): Climb direct COSOL, thence...

BIG DELTA TRANSITION (COSOL2-BIG): Turn left, track 241° to CROUK then turn left, track 102° to BIG VORTAC.

NENANA TRANSITION (COSOL2-ENN): Turn left, track 241° to CROUK then track 244° to ENN VORTAC.

COSOL TWO DEPARTURE (RNAV)

Orig 02MAR17

FAIRBANKS, ALASKA
EIELSON AFB (PAEI)

DELTA-FIVE DEPARTURE

SH-1729 [USAF]

EIELSON AFB (PAEI)

FAIRBANKS, ALASKA

| YUKON 2 MOA | Rwy | Knots | 60 | 120 | 180 | 240 | 300 | 360 |
|-------------|---------|-------|-----|------|------|------|------|------|
| 4/32① | V/Vflpm | 456 | 912 | 1368 | 1824 | 2280 | 2736 | 3192 |
| 4/32② | V/Vflpm | 410 | 820 | 1230 | 1640 | 2040 | 2450 | 2850 |
| 4/32③ | V/Vflpm | 300 | 600 | 900 | 1200 | 1500 | 1800 | |

ATC Climb Rate

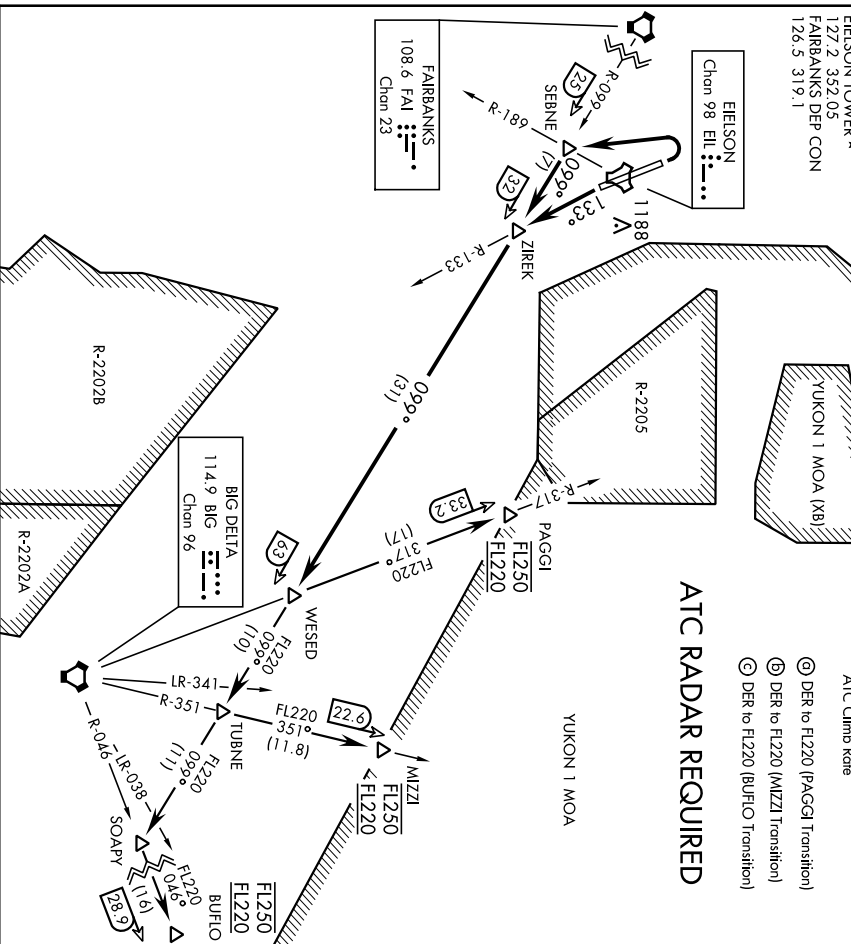
ATIS * 119.9 273.5
 CLNC DEL
 343.7
 EIELSON GND CON
 121.8 275.8
 EIELSON TOWER *
 127.2 352.05
 FAIRBANKS DEP CON
 126.5 319.1

EIELSON
 Chan 98 EL ...

FAIRBANKS
 108.6 FAI
 Chan 23

ATC RADAR REQUIRED

- ⊙ DER to FL220 (PAGGI Transition)
- ⊕ DER to FL220 (MIZZI Transition)
- ⊗ DER to FL220 (BUFLO Transition)



DEPARTURE ROUTE DESCRIPTION

- ▼ TAKE-OFF RMY 14 (DELTA5; ZIREK): Intercept EL TACAN R-133 to join FAI VORTAC R-099 at ZIREK and track outbound. Thence...
- ▼ TAKE-OFF RMY 32 (DELTA5; ZIREK): Turn left to intercept FAI VORTAC R-099 at SEBNE. Proceed outbound direct ZIREK. Thence...
- ▼ BUFLO GATE TRANSITION (DELTA5; BUFLO): Turn left at SOAPY and track outbound on BIG VORTAC R-046 to BUFLO. Cross BUFLO or FL220 block FL250.
- ▼ MIZZI GATE TRANSITION (DELTA5; MIZZI): Turn left at TUBNE and track outbound on BIG VORTAC R-351 to MIZZI. Cross MIZZI or FL220 block FL250.
- ▼ PAGGI GATE TRANSITION (DELTA5; PAGGI): Turn left at WESED and track outbound on BIG VORTAC R-317 to PAGGI. Cross PAGGI or FL220 block FL250.

DELTA-FIVE DEPARTURE

FAIRBANKS, ALASKA
 EIELSON AFB (PAEI)

17061

HAPLO TWO DEPARTURE (RNAV)

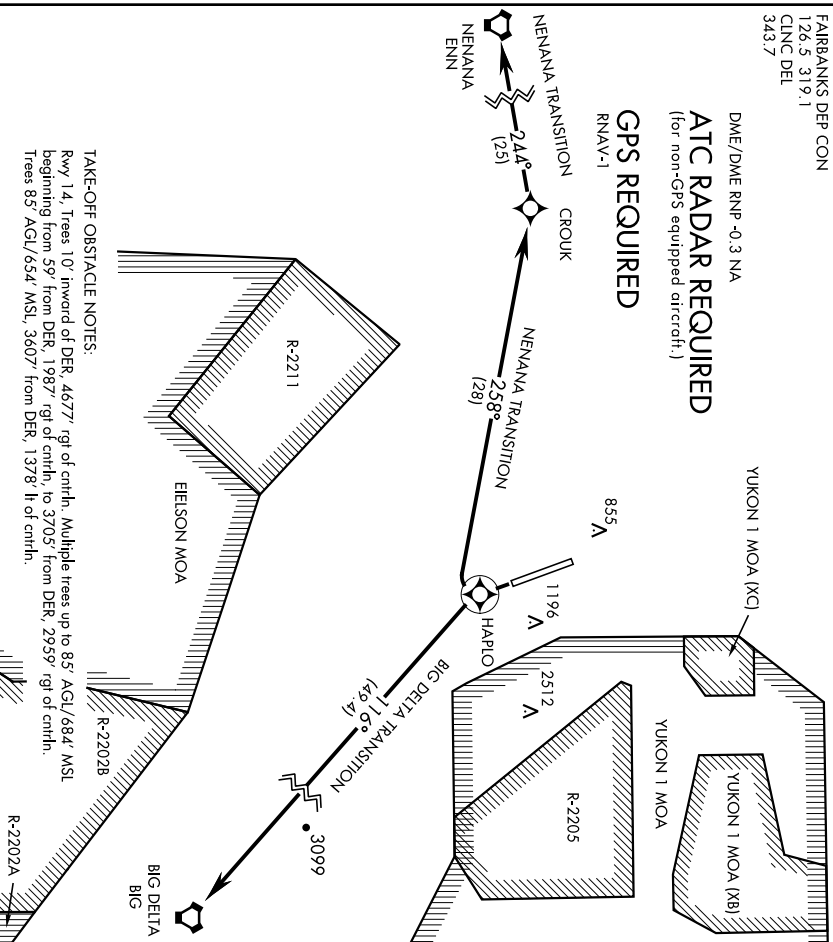
SL-1729 [USAF]

EIELSON AFB (PAEI)
FAIRBANKS, ALASKA

ATIS ★
 119.9 273.5
 EIELSON GND CON
 121.8 275.8
 EIELSON TOWER ★
 127.2 352.05
 FAIRBANKS DEP CON
 126.5 319.1
 CLNC DEL
 343.7

DME/DME RNP -0.3 NA
ATC RADAR REQUIRED
 (for non-GPS equipped aircraft.)

GPS REQUIRED
 RNAV-1



TAKE-OFF OBSTACLE NOTES:
 Rwy 14, Trees 10' inward of DER, 4677' rgt of cntrl. Multiple trees up to 85' AGL/684' MSI beginning from 59' from DER, 1987' rgt of cntrl, to 3705' from DER, 2959' rgt of cntrl.
 Trees 85' AGL/654' MSI, 3607' from DER, 1378' lt of cntrl.

DEPARTURE ROUTE DESCRIPTION

TAKE-OFF Rwy 14 (HAPLO2-HAPLO): climb direct HAPLO, thence...

BIG DELTA TRANSITION (HAPLO2-BIG): Turn left, track 116° to BIG VORTAC.

NENANA TRANSITION (HAPLO2-ENN): Turn right, track 258° to CROUK then track 244° to ENN VORTAC.

HAPLO TWO DEPARTURE (RNAV)

Orig 02MAR17

FAIRBANKS, ALASKA
EIELSON AFB (PAEI)

HAWGG SIX DEPARTURE (HAWGG6•HAWGG) SHL-1729 [USAF] FAIRBANKS, ALASKA

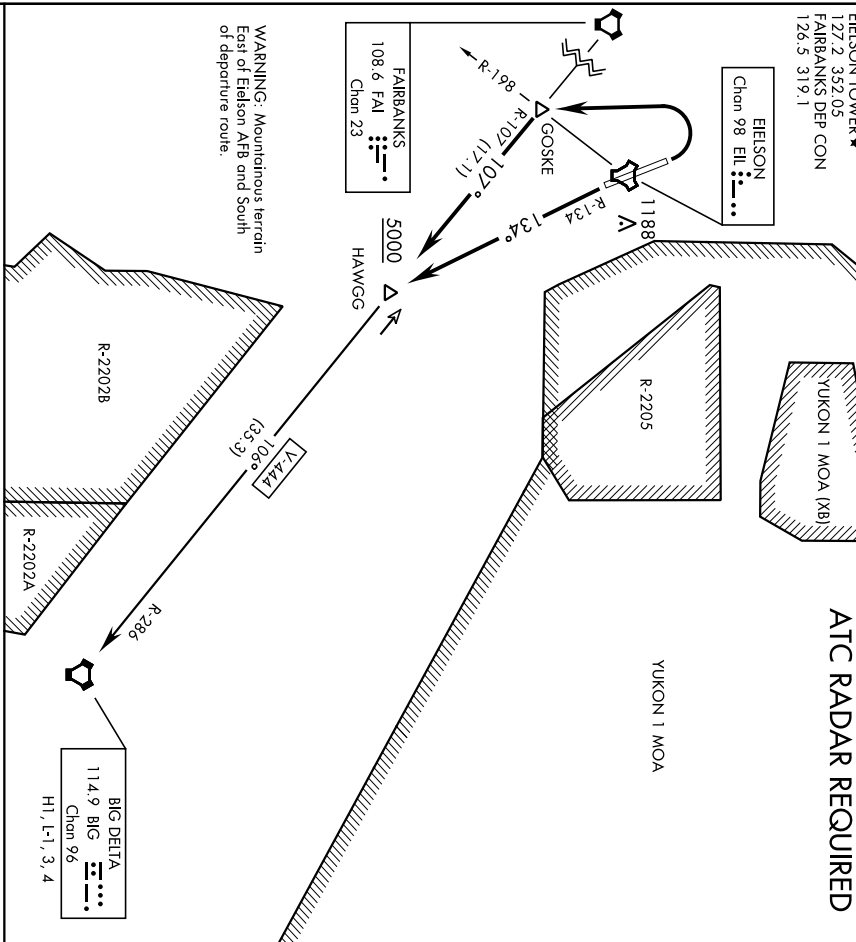
| ATIS | * 119.9 | 273.5 | YUKON 2 MOA | | | | | | | | |
|------|---------|-------|-------------|-----|-----------|-----|-----|-----|-----|------|------|
| CINC | DEI | | | Rwy | Knots | 60 | 120 | 180 | 240 | 300 | 360 |
| | | | | 14 | V/V[fpml] | 250 | 490 | 730 | 970 | 1210 | 1450 |

ATC Climb Rate to 5000

- EIELSON GND CON 343.7
- 121.8 275.8 EIELSON TOWER*
- 127.2 352.05 FAIRBANKS DEP CON
- 126.5 319.1

EIELSON
Chan 98 ELI

ATC RADAR REQUIRED



DEPARTURE ROUTE DESCRIPTION

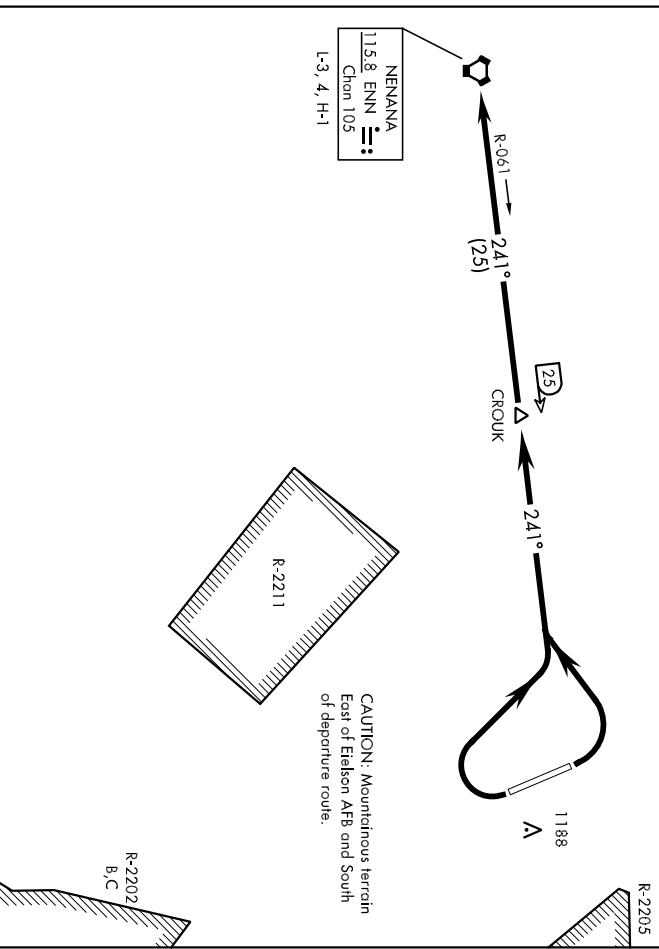
TAKE-OFF RMY 14: Turn left to join ELI TACAN R-134 to FAI VORTAC R-107. Cross HAWGG at or above 5000. Thence . . .

TAKE-OFF RMY 32: Turn left to GOSKE then continue outbound FAI VORTAC R-107 to HAWGG. Cross HAWGG at or above 5000. Thence . . .

Intercept V-444 to BIG VORTAC, thence via assigned route.

HAWGG SIX DEPARTURE (HAWGG6•HAWGG)

ATIS ★ 119.9 273.5
CINC DEL
343.7
EIELSON GND CON
121.8 275.8
EIELSON TOWER ★
127.2 352.05
FAIRBANKS DEP CON
126.5 319.1



AK, 27 APR 2017 to 22 JUN 2017

AK, 27 APR 2017 to 22 JUN 2017

▼ DEPARTURE ROUTE DESCRIPTION

TAKE-OFF RWY 14: Turn right to intercept ENN VORTAC R-061 and climb to assigned altitude, thence . . .

TAKE-OFF RWY 32: Turn left to intercept ENN VORTAC R-061 and climb to assigned altitude, thence . . .

Proceed to NENANNA via R-061 then via assigned route.

15064

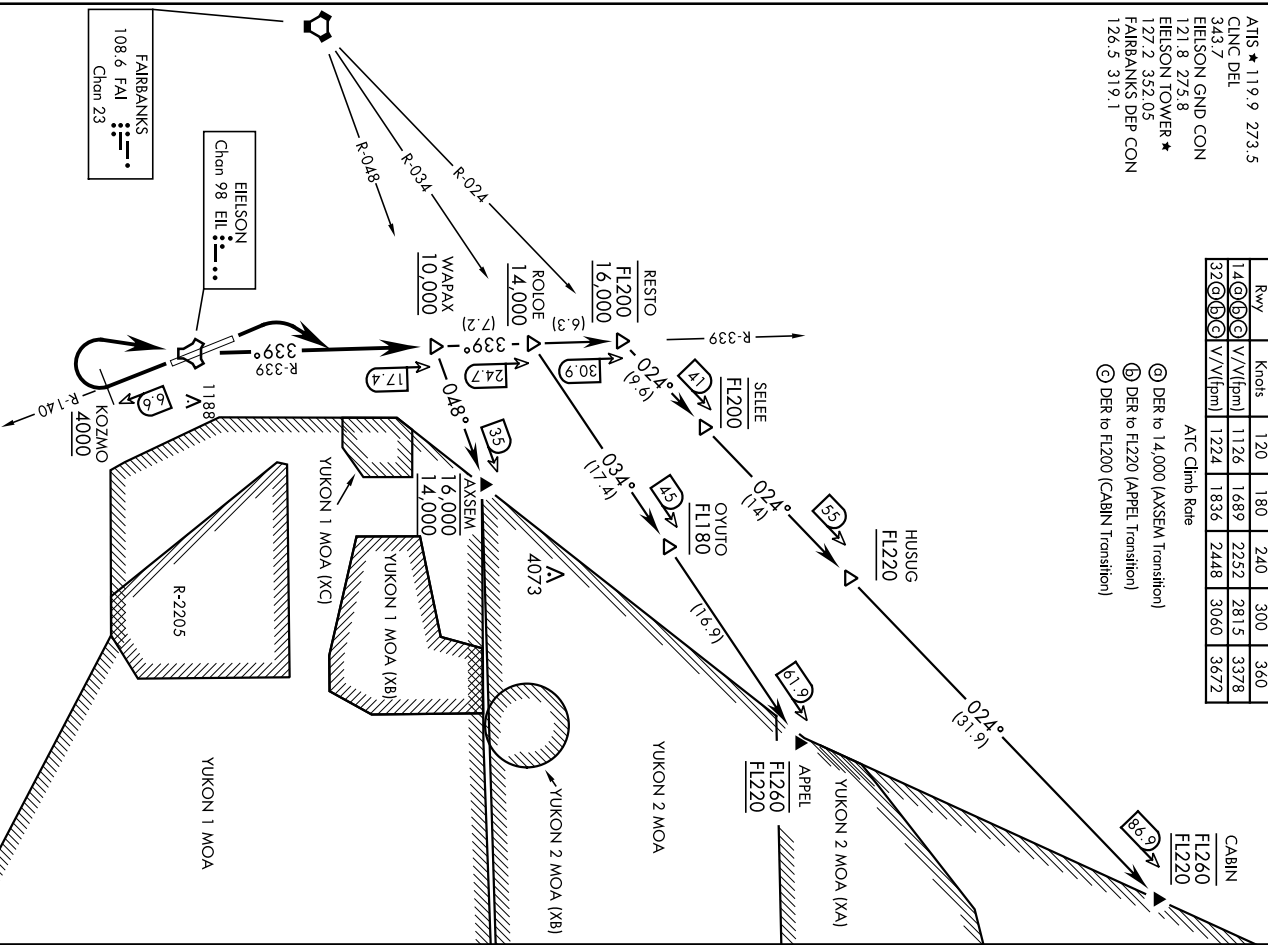
WAPAX TWO DEPARTURE (WAPAX2 • WAPAX) SH-1729 (USAF)

EIELSON AFB (PAEI)
FAIRBANKS, ALASKA

| Alt | Rwy | Knots | 120 | 180 | 240 | 300 | 360 | | |
|-------------------|-------|-------|-----|-------|------|------|------|-------|-------|
| CLNC DEL | 14 | (C) | V/V | (fpm) | 1126 | 1689 | 2252 | 281.5 | 337.8 |
| EIELSON GND CON | 343.7 | (C) | V/V | (fpm) | 1224 | 1836 | 2448 | 3060 | 3672 |
| EIELSON TOWER | 121.8 | (C) | (C) | (C) | (C) | (C) | (C) | (C) | (C) |
| EIELSON TOWER | 127.2 | (C) | (C) | (C) | (C) | (C) | (C) | (C) | (C) |
| FAIRBANKS DEP CON | 126.5 | (C) | (C) | (C) | (C) | (C) | (C) | (C) | (C) |
| FAIRBANKS DEP CON | 319.1 | (C) | (C) | (C) | (C) | (C) | (C) | (C) | (C) |

ATC Climb Rate

- ⊙ DER to 14,000 (AXSEM Transition)
- ⊙ DER to FL220 (APPEL Transition)
- ⊙ DER to FL200 (CABIN Transition)



AK, 27 APR 2017 to 22 JUN 2017

AK, 27 APR 2017 to 22 JUN 2017

ATC RADAR REQUIRED

(Continued on next page)

WAPAX TWO DEPARTURE (WAPAX2 • WAPAX)

FAIRBANKS, ALASKA
EIELSON AFB (PAEI)

15064

WAPAX TWO DEPARTURE (WAPAX2 • WAPAX)

EIELSON AFB (PAEI)

FAIRBANKS, ALASKA

SH-1729 [USAF]

DEPARTURE ROUTE DESCRIPTION

TAKE-OFF RWY 14: Turn right to intercept EIL TACAN R-140 to KOZMO. Cross KOZMO at or above 4000, then turn right direct EIL to intercept EIL R-339 outbound to WAPAX. Cross WAPAX at or above 10,000. Thence . . .

TAKE-OFF RWY 32: Turn right to intercept EIL TACAN R-339 to WAPAX. Cross WAPAX at or above 10,000. Thence . . .

APPEL GATE TRANSITION (WAPAX2.APPEL): Cross ROLOE at or above 14,000. Turn right track outbound on FAI VORTAC R-034 direct OYUTO, direct APPEL. Cross OYUTO at or above FL180, cross APPEL at or above FL220 block FL260.

AXSEM GATE TRANSITION (WAPAX2.AXSEM): Turn right and track outbound on FAI VORTAC R-048 to AXSEM. Cross AXSEM at or above 14,000 block 16,000.

CABIN GATE TRANSITION (WAPAX2.CABIN): Cross RESTO at or above 16,000 block FL200. Turn right and track outbound on FAI VORTAC R-024 direct SELEE, direct HUSUG, direct CABIN. Cross SELEE at FL200, cross HUSUG at or above FL220, cross CABIN at or above FL220 block FL260.

AK, 27 APR 2017 to 22 JUN 2017

AK, 27 APR 2017 to 22 JUN 2017

WAPAX TWO DEPARTURE (WAPAX2 • WAPAX)

FAIRBANKS, ALASKA
EIELSON AFB (PAEI)