

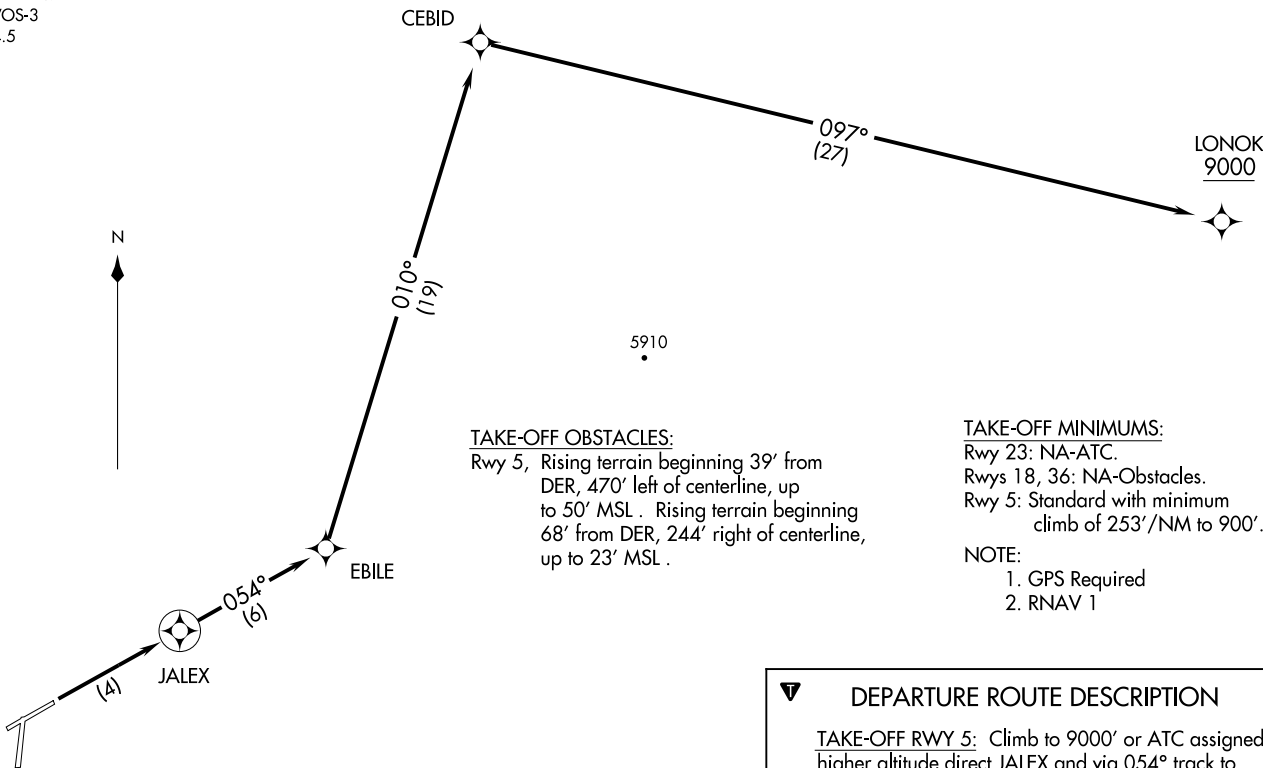
JALEX ONE DEPARTURE (RNAV)
 (JALEX1 JALEX) 08213

(JALEX1 JALEX) 08213
 JALEX ONE DEPARTURE (RNAV)

SI-1244 (FAA)

ADAK (ADK)(P/ADK)
 ADAK ISLAND, ALASKA

ANCHORAGE CENTER
 126.4 254.3
 CTAF 122.9
 AWOS-3
 134.5



TAKE-OFF OBSTACLES:

Rwy 5, Rising terrain beginning 39' from DER, 470' left of centerline, up to 50' MSL. Rising terrain beginning 68' from DER, 244' right of centerline, up to 23' MSL.

TAKE-OFF MINIMUMS:

Rwy 23: NA-ATC.
 Rwy 18, 36: NA-Obstacles.
 Rwy 5: Standard with minimum climb of 253'/NM to 900'.

NOTE:

1. GPS Required
2. RNAV 1

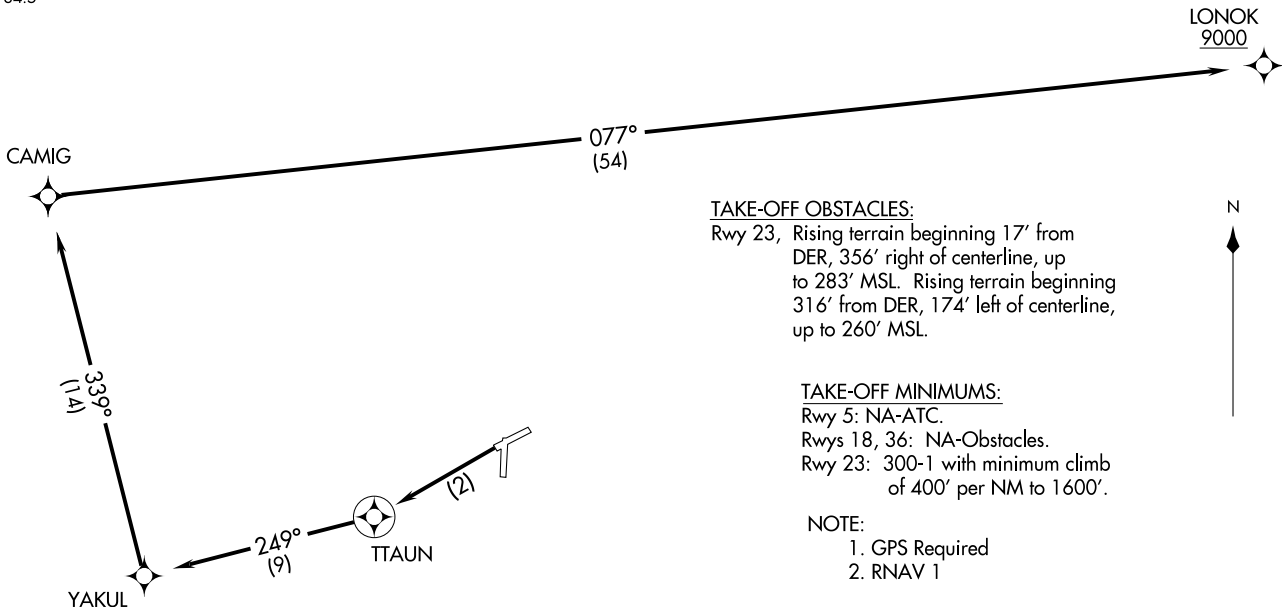
DEPARTURE ROUTE DESCRIPTION

TAKE-OFF RWY 5: Climb to 9000' or ATC assigned higher altitude direct JALEX and via 054° track to EBILE, and via 010° track to CEBID and via 097° track to cross LONOK at or above 9000' before proceeding on course.

NOTE: Chart not to scale.

ANCHORAGE CENTER
 126.4 254.3
 CTAF 122.9
 AWOS-3
 134.5

TTAUN TWO DEPARTURE (RNAV)
 (TTAUN2.TTAUN) 08213



TAKE-OFF OBSTACLES:

Rwy 23, Rising terrain beginning 17' from DER, 356' right of centerline, up to 283' MSL. Rising terrain beginning 316' from DER, 174' left of centerline, up to 260' MSL.

TAKE-OFF MINIMUMS:

Rwy 5: NA-ATC.
 Rwys 18, 36: NA-Obstacles.
 Rwy 23: 300-1 with minimum climb of 400' per NM to 1600'.

NOTE:

1. GPS Required
2. RNAV 1

DEPARTURE ROUTE DESCRIPTION

TAKE-OFF RUNWAY 23: Climb to 9000 or assigned higher altitude direct TTAUN, and via 249° track to YAKUL, and right turn via 339° track to CAMIG and right turn via 077° track to LONOK before proceeding on course.

NOTE: Chart not to scale.

(TTAUN2.TTAUN) 08213
 TTAUN TWO DEPARTURE (RNAV)

SI-1244 (FAA)

ADAK (ADIK)(PADIK)
 ADAK ISLAND, ALASKA

ADAK ISLAND, ALASKA
 ADAK (ADIK)(PADIK)