

WAAS CH 45720 W27A	APP CRS 272°	Rwy Idg TDZE Apt Elev	5004 903 905
--	------------------------	-----------------------------	---

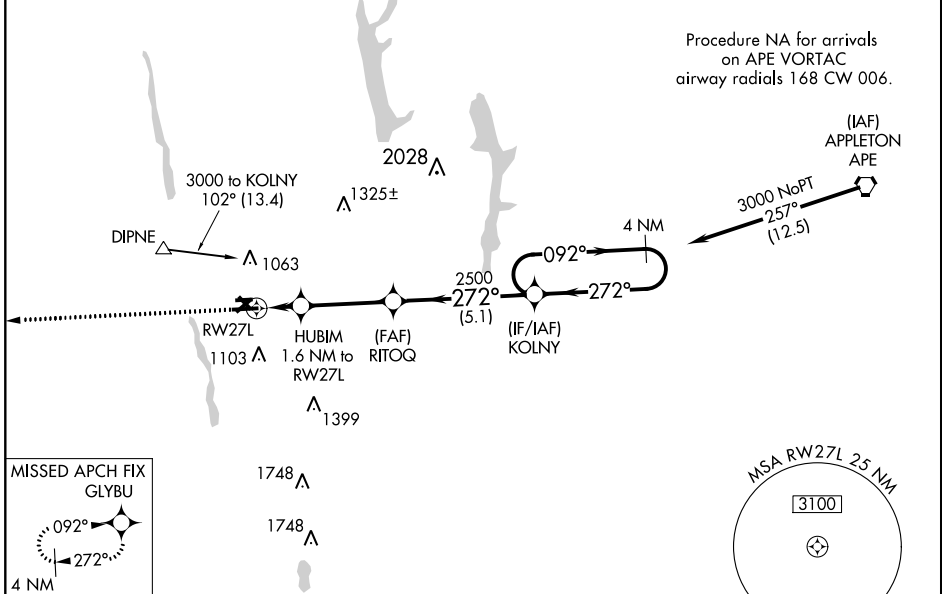
RNAV (GPS) RWY 27L

OHIO STATE UNIVERSITY (OSU)

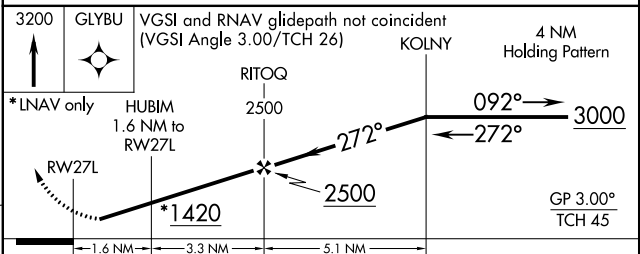
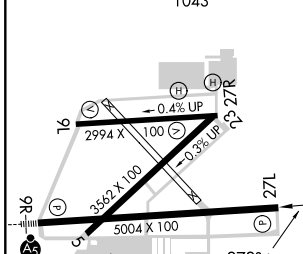
⚠ Baro-VNAV NA when using Port Columbus altimeter setting. For uncompensated Baro-VNAV systems, LNAV/VNAV NA below -16°C (4°F) or above 38°C (100°F). DME/DME RNP-0.3 NA. Visibility reduction by helicopters NA. When local altimeter setting not received, use Port Columbus altimeter setting and increase all DA 35 feet and all MDA 40 feet, increase LNAV/VNAV all Cats and LNAV Cats C/D visibility 1/8 mile.

MISSED APPROACH:
Climb to 3200 direct GLYBU and hold.

ATIS 121.35	COLUMBUS APP CON 125.95 317.775	STATE TOWER ★ 118.8 (CTAF) 0 254.325	GND CON 121.7	CLNC DEL 121.7	UNICOM 122.95
-----------------------	---	--	-------------------------	--------------------------	-------------------------



ELEV 905	D	TDZE 903
----------	----------	----------



CATEGORY	A	B	C	D
LPV DA		1153-1	250 (300-1)	
LNAV/VNAV DA		1199-1	296 (300-1)	
LNAV MDA	1280-1	377 (400-1)	1280-1½	377 (400-1½)
CIRCLING	1380-1	475 (500-1)	1380-1½	1460-2 555 (600-2)

REIL Rwy 27L
HIRL Rwy 9R-27L
MIRL Rwy 9L-27R and 5-23

EC-2, 07 DEC 2017 to 04 JAN 2018

EC-2, 07 DEC 2017 to 04 JAN 2018